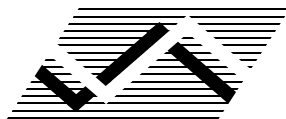


---

# **NEW SOUTH WALES RECORDED CRIME STATISTICS 2010**

---

**Derek Goh and Steve Moffatt**



NSW Bureau of Crime Statistics and Research

## ACKNOWLEDGEMENTS

The production of this report was greatly assisted by officers within the NSW Police Force. Special thanks are due to officers in Business and Technology Services and in Corporate Information, Executive Support Group. The following officers of the NSW Bureau of Crime Statistics and Research contributed significantly to the production of this report. Thanks to Florence Sin for guidance in the publishing of the report. Thanks also to Neil Marott and Tracy Painting for processing, validating and advising on the data contained in the report. Finally, thanks to Craig Jones, Jessie Holmes and Katrina Grech for reviews and presentation improvements and Bryan Price for the mapping work used on the cover of the report.

2011

Published by the NSW Bureau of Crime Statistics and Research  
Department of Justice and Attorney General  
Level 8  
St James Centre  
111 Elizabeth Street  
Sydney 2000  
Australia

Phone: + 61 (2) 9231 9190  
Fax: + 61 (2) 9231 9187  
Email: [bcsr@agd.nsw.gov.au](mailto:bcsr@agd.nsw.gov.au)  
Website: [www.bocsar.nsw.gov.au](http://www.bocsar.nsw.gov.au)  
ISSN 1035-9044

This report is available in pdf format on our website and may be provided in alternative formats. Please contact the Bureau on 9231 9190 or email us at [bcsr@agd.nsw.gov.au](mailto:bcsr@agd.nsw.gov.au).

### Front Cover

---

#### ***Rates of possession and/or use of cannabis by Local Government Area (LGA)***

In 2010 NSW Police recorded 18,693 incidents of *possession and/or use of cannabis*, which was up by 36.9% on recorded incidents from 2009. The NSW rate was 262 incidents per 100,000 of population. Byron LGA was more than eight times the State rate and Lismore, Deniliquin and Sydney LGAs recorded rates more than five times the State rate.

## INTRODUCTION

This report presents data on crime reported to, or detected by, the NSW Police Force from January 1995 to December 2010, with a focus on the statistical trends for the 24 months ending December 2010. The data were extracted from the Computerised Operational Policing System (COPS) of the NSW Police Force in February 2011.

One improvement in the data extraction process since the last annual report is that we now revise the data back to 1995 each time a new report is run. Previously our revisions only covered the past 24-month period. Revised data from July 1998 are available through the online data tools on the Bureau's website and revised data for earlier years are available on request.

The State graph (page 7) for violent offences<sup>1</sup> shows strong seasonal variation but the underlying trend is stable over the past five years. The 24-month trend tests for violent offences in this report show no uptrends at State, Statistical Division and Metropolitan Statistical Subdivision levels. Only two of the 154 Local Government Areas (LGAs) recorded a significant uptrend for violent offences.

The State graph (page 7) for property offences<sup>2</sup> displays less seasonality and shows a downward trend over the last five years. The 24-month trend tests for property offences in this report show no uptrends at State and Metropolitan Statistical Subdivision levels. One Statistical Division (Northern) and eight of the 154 LGAs recorded significant uptrends for property offences.

The report includes an overview of trends in the most recent two-year period for major offence categories, firstly for NSW and then across NSW regions broken down to the LGA level. At the State level, for the 24-month period to the end of December 2010, no major offence category has been trending upwards. Seven of the 17 major offence categories were trending downwards. These included two robbery offences (*robbery without a weapon* and *robbery with a weapon not a firearm*), four theft offences (*break and enter non-dwelling*, *motor vehicle theft*, *steal from motor vehicle* and *steal from person*) and *malicious damage to property*.

Drug offences show the strongest uptrends amongst the expanded list of offences (page 16). Unpublished research by the Bureau during the past year indicates that hospitalisations for heroin, amphetamine and cocaine use are closely related to arrests for use and possession of narcotics, amphetamines and cocaine. This suggests that trends in arrests for use and possession of these drugs provide some indication of trends in their actual use. However we have no evidence at present that arrests in NSW for use and possession of other illegal drugs, such as cannabis and ecstasy, are indicative of their actual use. Upward trends in arrests for these drugs, therefore, should not be interpreted as evidence of increased drug use.

The front cover is a LGA map showing variation across NSW in the rates of *possession and/or use of cannabis*.

Dr Don Weatherburn  
**Director**

April 2011

---

<sup>1</sup> Violent offences include: murder, assault - domestic violence related, assault - non-domestic violence related, assault police, robbery without a weapon, robbery with a firearm, robbery with a weapon not a firearm, sexual assault and indecent assault / act of indecency / other sexual offences. For further explanation of violent offences see page 44, paragraph 7.

<sup>2</sup> Property offences include: break and enter dwelling, break and enter non-dwelling, motor vehicle theft, steal from motor vehicle, steal from retail store, steal from dwelling, steal from person, stock theft, other theft and fraud. For further explanation of property offences, see page 44, paragraph 7.

## CONTENTS

<b>SECTION 1: OVERVIEW OF TRENDS IN VIOLENT AND PROPERTY CRIME</b>	. . .	5
Figure 1.1 NSW long-term trend in violent crime	. . .	7
Figure 1.2 NSW long-term trend in property crime	. . .	7
Table 1.1 Trends in violent and property offences, NSW Statistical Divisions (SDs) and NSW	. . .	8
Table 1.2 Trends in violent and property offences, NSW Metropolitan Statistical Subdivisions (SSDs)	. . .	9
Table 1.3 Trends in violent and property offences, NSW Local Government Areas (LGAs)	. . .	10
<b>SECTION 2: OVERVIEW OF TRENDS IN RECORDED CRIME, BY OFFENCE TYPE</b>	. . .	13
Table 2.1 Trends in recorded criminal incidents for major offences, NSW, January 2006 to December 2010	. . .	14
Table 2.2 Periodic trends in recorded criminal incidents for major offences, NSW, January 2005 to December 2010	. . .	15
Table 2.3 Number and trends in recorded criminal incidents for all offences, NSW, January 2009 to December 2010	. . .	16
Table 2.4 Number and outcome of 24-month trend tests for major offences, NSW LGAs, all reports 2004 to 2010	. . .	17
Figure 2.1A Number of NSW LGAs with significant upward trends for major offences, January 2008 to December 2009 and January 2009 to December 2010	. . .	18
Figure 2.1B Number of NSW LGAs with significant downward trends for major offences, January 2008 to December 2009 and January 2009 to December 2010	. . .	18
<b>SECTION 3: TRENDS, RATE COMPARISONS AND RECORDED CRIMINAL INCIDENTS FOR MAJOR OFFENCES, NSW REGIONS AND LOCAL GOVERNMENT AREAS (LGAS)</b>	. . .	19
Table 3.1A Trends in recorded criminal incidents for major offences, NSW SDs, January 2009 to December 2010	. . .	20
Table 3.1B Ratio to NSW rate of recorded criminal incidents per 100,000 population, major offences, NSW SDs, 2010	. . .	20
Table 3.1C Number of recorded criminal incidents for major offences, NSW SDs, 2010	. . .	21
Table 3.1D Number of recorded criminal incidents for major offences, NSW SDs, 2009	. . .	21
Table 3.2A Trends in recorded criminal incidents for major offences, NSW Metropolitan SSDs, January 2009 to December 2010	. . .	22
Table 3.2B Ratio to NSW rate of recorded criminal incidents per 100,000 population, major offences, NSW Metropolitan SSDs, 2010	. . .	22
Table 3.2C Number of recorded criminal incidents for major offences, NSW Metropolitan SSDs, 2010	. . .	23
Table 3.2D Number of recorded criminal incidents for major offences, NSW Metropolitan SSDs, 2009	. . .	23

## NSW Recorded Crime Statistics 2010

Table 3.3A	Trends in recorded criminal incidents for major offences, NSW LGAs, January 2009 to December 2010	. . . 24
Table 3.3B	Ratio to NSW rate of recorded criminal incidents per 100,000 population, major offences, NSW LGAs, 2010	. . . 26
Table 3.3C	Number of recorded criminal incidents for major offences, NSW LGAs, 2010	. . . 28
Table 3.3D	Number of recorded criminal incidents for major offences, NSW LGAs, 2009	. . . 30
<b>SECTION 4: METHODS OF PROCEEDINGS AGAINST ALLEGED OFFENDERS, 2008, 2009 AND 2010</b>		. . . 33
Figure 4.1	Trends in referral methods for alleged offenders proceeded against to court, NSW, January 2009 to December 2010	. . . 34
Table 4.1	Number of alleged offenders recorded by NSW Police by method of legal proceedings, NSW, January 2008 - December 2010	. . . 35
<b>SECTION 5: CLEARED CRIMINAL INCIDENTS AND WHETHER LEGAL PROCEEDINGS COMMENCED FOR SELECTED OFFENCES, JANUARY 2008 TO SEPTEMBER 2010</b>		. . . 37
Table 5.1	Number of recorded criminal incidents for selected offences by clear up status and whether legal proceedings commenced, NSW, January 2008 to December 2008	. . . 38
Table 5.2	Number of recorded criminal incidents for selected offences by clear up status and whether legal proceedings commenced, NSW, January 2009 to December 2009	. . . 39
Table 5.3	Number of recorded criminal incidents for selected offences by clear up status and whether legal proceedings commenced, NSW, January 2010 to September 2010	. . . 40
Figure 5.1	Percentage of recorded criminal incidents for selected offences where legal proceedings commenced within 30 and 90 days, NSW, January 2010 to September 2010	. . . 41
<b>APPENDICES</b>		. . . 43
Appendix 1	Trends in recorded criminal incidents for NSW	. . . 44
Appendix 2	Definitions and Explanatory Notes	. . . 45
Appendix 3	BOCSAR offences mapped to Police incident categories	. . . 48
Appendix 4	Maps	. . . 54
Appendix 5	Local Government Areas in Metropolitan Statistical Subdivisions and NSW regional Statistical Divisions	. . . 56



---

**SECTION 1:**

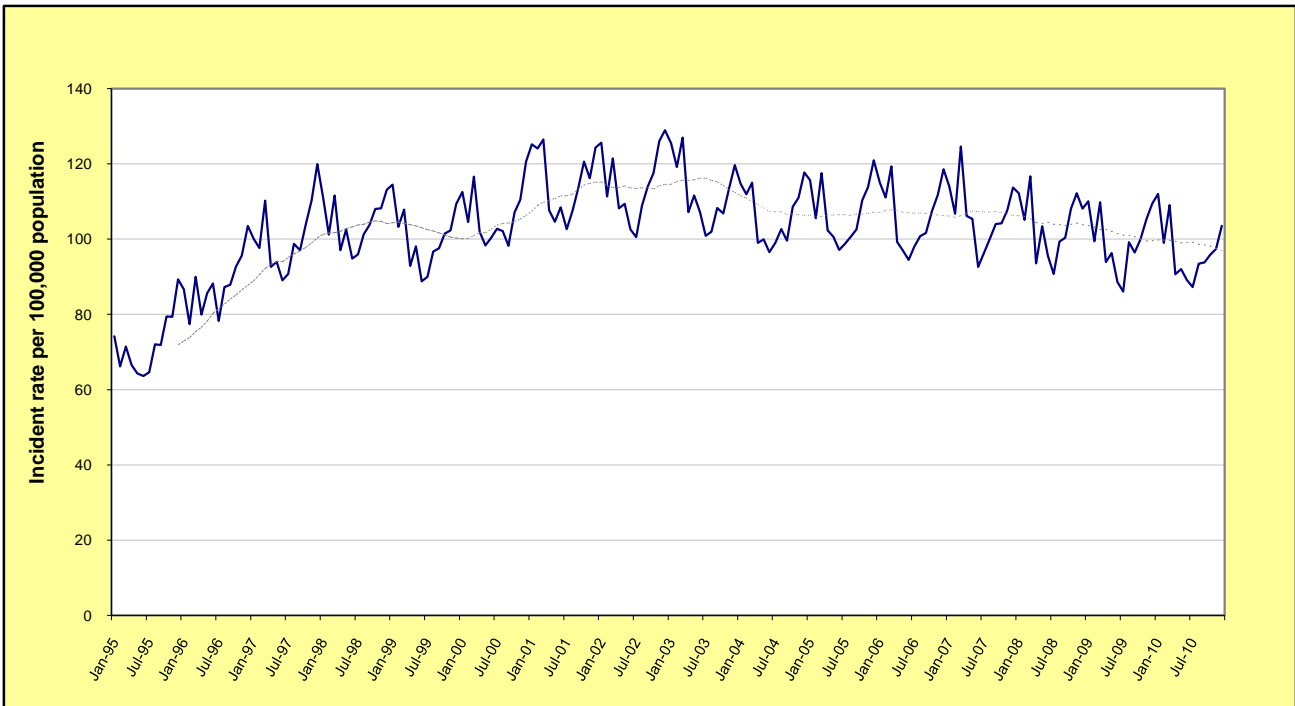
**OVERVIEW OF TRENDS  
IN VIOLENT AND PROPERTY CRIME**

---

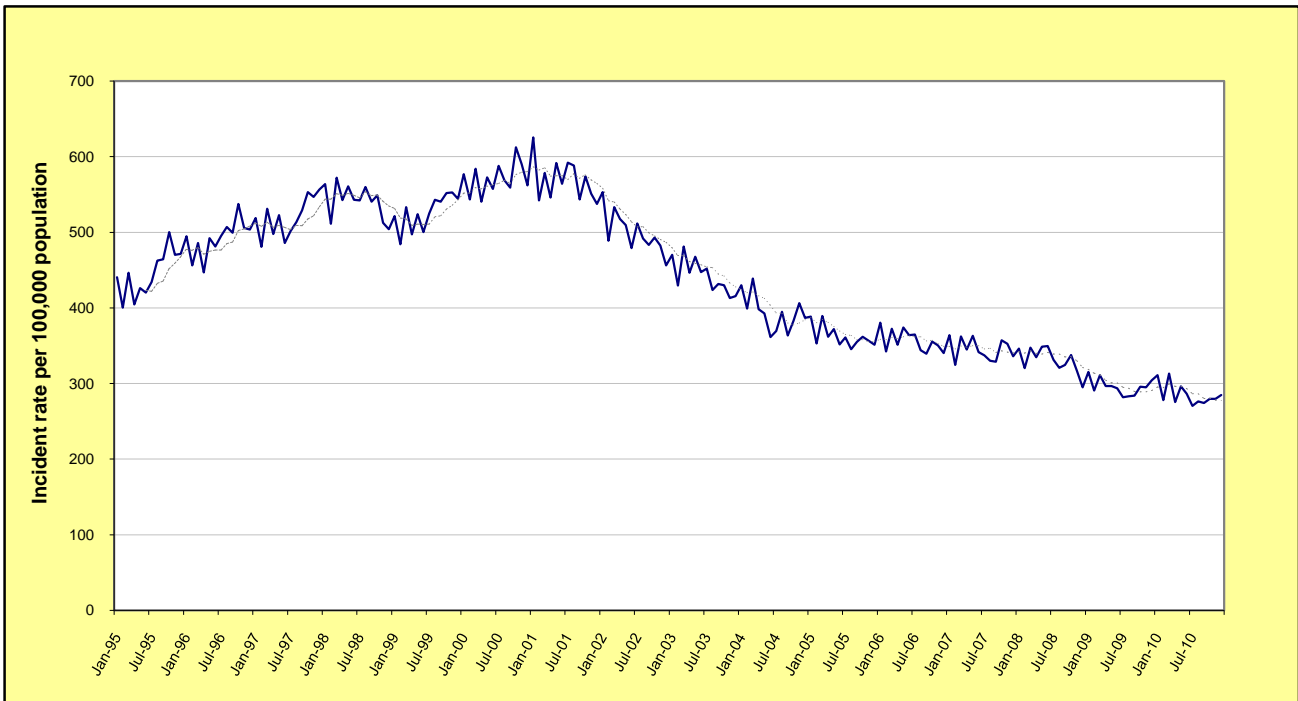




**FIGURE 1.1: NSW LONG-TERM TREND IN VIOLENT CRIME\***



**FIGURE 1.2: NSW LONG-TERM TREND IN PROPERTY CRIME\*\***



\* **Violent offences** include: murder, assault - domestic violence related, assault - non-domestic violence related, assault police, robbery without a weapon, robbery with a firearm, robbery with a weapon not a firearm, sexual assault and indecent assault / act of indecency / other sexual offences.

\*\* **Property offences** include: break and enter dwelling, break and enter non-dwelling, motor vehicle theft, steal from motor vehicle, steal from retail store, steal from dwelling, steal from person, stock theft, other theft and fraud.

For further explanation of **violent offences** and **property offences**, see page 44, paragraph 7.

**TABLE 1.1: TRENDS<sup>^</sup> IN RECORDED CRIMINAL INCIDENTS, VIOLENT AND PROPERTY OFFENCES,  
NSW STATISTICAL DIVISIONS (SDs) AND NSW, JANUARY 2006 TO DECEMBER 2010**

Statistical Division	Violent Offences*			Property Offences**		
	Annual percentage change over Jan 2009 - Dec 2010	Average annual percentage change over Jan 2006 - Dec 2010	Ratio <sup>#</sup> to NSW rate	Annual percentage change over Jan 2009 - Dec 2010	Average annual percentage change over Jan 2006 - Dec 2010	Ratio <sup>#</sup> to NSW rate
Sydney	Stable	Stable	0.9	-4.7%	-5.4%	1.0
Hunter	Stable	Stable	1.0	Stable	-3.6%	1.1
Illawarra	-7.9%	-2.9%	0.9	Stable	-5.3%	0.9
Richmond-Tweed	Stable	-4.4%	1.0	Stable	-4.0%	1.0
Mid-North Coast	Stable	Stable	1.1	Stable	Stable	1.1
Northern	Stable	Stable	1.5	5.2%	Stable	1.1
North Western	Stable	Stable	2.1	Stable	Stable	1.4
Central West	Stable	Stable	1.3	Stable	Stable	1.1
South Eastern	Stable	-4.8%	0.8	Stable	-3.3%	0.8
Murrumbidgee	Stable	Stable	1.2	Stable	Stable	1.1
Murray	Stable	-4.8%	1.0	Stable	Stable	1.1
Far West	Stable	Stable	2.1	Stable	-3.3%	1.2
<b>NSW</b>	<b>Stable</b>	<b>Stable</b>	<b>1.0</b>	<b>-3.4%</b>	<b>-4.3%</b>	<b>1.0</b>

<sup>^</sup> For further explanation of **trend results**, see page 44, paragraphs 5 and 6.

\* **Violent offences** include: murder, assault - domestic violence related, assault - non-domestic violence related, assault police, robbery without a weapon, robbery with a firearm, robbery with a weapon not a firearm, sexual assault and indecent assault / act of indecency / other sexual offences.

\*\* **Property offences** include: break and enter dwelling, break and enter non-dwelling, motor vehicle theft, steal from motor vehicle, steal from retail store, steal from dwelling, steal from person, stock theft, other theft and fraud.

For further explanation of **violent offences** and **property offences**, see page 44, paragraph 7.

<sup>#</sup> For further explanation of **rate calculation populations** and the **ratio to NSW rate**, see page 44, Note 3 and paragraph 8.

**TABLE 1.2: TRENDS<sup>^</sup> IN RECORDED CRIMINAL INCIDENTS, VIOLENT AND PROPERTY OFFENCES,  
NSW METROPOLITAN STATISTICAL SUBDIVISIONS (SSDs), JANUARY 2006 TO DECEMBER 2010**

Metropolitan Statistical Subdivision	Violent Offences*			Property Offences**		
	Annual percentage change over	Average annual percentage change over	Ratio <sup>#</sup> to NSW rate	Annual percentage change over	Average annual percentage change over	Ratio <sup>#</sup> to NSW rate
	Jan 2009 - Dec 2010	Jan 2006 - Dec 2010		Jan 2009 - Dec 2010	Jan 2006 - Dec 2010	
Inner Sydney	Stable	-2.9%	2.0	-7.1%	-7.3%	2.4
Eastern Suburbs	Stable	-5.0%	0.7	-11.4%	-7.3%	1.0
St George-Sutherland	Stable	Stable	0.6	Stable	-4.3%	0.6
Canterbury-Bankstown	Stable	Stable	0.8	-4.4%	-5.9%	0.9
Fairfield-Liverpool	Stable	1.9%	1.0	Stable	-5.1%	0.9
Outer South Western Sydney	Stable	-2.4%	1.2	-4.3%	-4.0%	0.9
Inner Western Sydney	Stable	Stable	0.7	Stable	-2.4%	1.0
Central Western Sydney	Stable	Stable	1.1	-2.7%	-5.2%	1.1
Outer Western Sydney	Stable	2.3%	1.1	Stable	-4.3%	0.9
Blacktown	Stable	Stable	1.3	Stable	-3.8%	1.1
Lower Northern Sydney	Stable	-3.3%	0.4	-8.3%	-7.4%	0.7
Central Northern Sydney	Stable	Stable	0.3	-13.8%	-6.5%	0.5
Northern Beaches	Stable	3.9%	0.6	-10.4%	-4.7%	0.7
Central Coast	Stable	Stable	1.0	Stable	-2.3%	1.0
Newcastle	Stable	Stable	1.1	Stable	-3.8%	1.2
Wollongong	-8.0%	-4.4%	0.9	Stable	-7.0%	0.8

<sup>^</sup> For further explanation of **trend results**, see page 44, paragraphs 5 and 6.

\* **Violent offences** include: murder, assault - domestic violence related, assault - non-domestic violence related, assault police, robbery without a weapon, robbery with a firearm, robbery with a weapon not a firearm, sexual assault and indecent assault / act of indecency / other sexual offences.

\*\* **Property offences** include: break and enter dwelling, break and enter non-dwelling, motor vehicle theft, steal from motor vehicle, steal from retail store, steal from dwelling, steal from person, stock theft, other theft and fraud.

For further explanation of **violent offences** and **property offences**, see page 44, paragraph 7.

<sup>#</sup> For further explanation of **rate calculation populations** and the **ratio to NSW rate**, see page 44, Note 3 and paragraph 8.

**TABLE 1.3: TRENDS<sup>A</sup> IN RECORDED CRIMINAL INCIDENTS, VIOLENT AND PROPERTY OFFENCES,  
NSW LOCAL GOVERNMENT AREAS (LGAs), JANUARY 2006 TO DECEMBER 2010**

NSW LGAs	Violent Offences*			Property Offences*		
	Annual percentage change over	Average annual percentage change	Ratio <sup>#</sup> to NSW rate	Annual percentage change over	Average annual percentage change	Ratio <sup>#</sup> to NSW rate
	Jan 2009 - Dec 2010	Jan 2006 - Dec 2010		Jan 2009 - Dec 2010	Jan 2006 - Dec 2010	
Albury	ns	-4.6	1.3	ns	ns	1.6
Armidale Dumaresq	ns	ns	1.3	ns	ns	1.1
Ashfield	38.6	-1.3	0.7	ns	-3.3	0.8
Auburn	ns	4.9	1.1	ns	-3.5	1.1
Ballina	ns	-5.4	0.8	-26.6	-7.6	0.7
Bairanald	ns	ns	.	ns	-4.5	.
Bankstown	ns	ns	0.8	-7.1	-6.8	1.0
Bathurst Regional	ns	ns	1.3	ns	ns	1.2
Bega Valley	ns	ns	0.8	ns	-6.2	0.7
Bellingen	ns	ns	0.6	ns	ns	0.6
Berrigan	ns	ns	0.5	ns	-6.3	0.6
Blacktown	ns	ns	1.3	ns	-3.8	1.1
Bland	ns	-10.8	0.7	ns	-8.9	0.7
Blayney	ns	ns	0.6	ns	ns	0.6
Blue Mountains	ns	ns	0.8	ns	-6.8	0.6
Bogan	ns	ns	1.6	ns	ns	0.8
Bombala	ns	ns	.	ns	ns	.
Boorowa	.	.	.	ns	ns	.
Botany Bay	ns	ns	0.9	ns	ns	1.7
Bourke	ns	ns	6.9	ns	-10.0	2.7
Brewarrina	ns	ns	.	ns	ns	.
Broken Hill	ns	ns	1.7	ns	-3.8	1.1
Burwood	ns	ns	0.9	ns	-4.0	1.5
Byron	ns	ns	1.3	ns	ns	1.3
Cabonne	ns	ns	0.6	ns	ns	0.5
Camden	ns	ns	0.7	ns	ns	0.8
Campbelltown	ns	-3.3	1.6	ns	-5.1	1.1
Canada Bay	ns	ns	0.4	ns	-0.9	0.7
Canterbury	ns	ns	0.8	ns	-4.4	0.8
Carrathool	ns	12.1	.	ns	ns	.
Central Darling	ns	ns	.	ns	ns	.
Cessnock	ns	ns	1.2	ns	-4.4	1.0
Clarence Valley	ns	-5.8	0.8	ns	-5.1	0.9
Cobar	46.7	ns	1.8	ns	ns	1.0
Coffs Harbour	ns	ns	1.2	ns	-3.8	1.1
Conargo	.	.	.	.	.	.
Coolamon	ns	ns	0.7	ns	ns	0.7
Cooma-Monaro	ns	ns	0.8	ns	-7.5	0.7
Coonamble	ns	-10.9	2.5	4.7	ns	2.3
Cootamundra	ns	ns	1.3	ns	ns	0.8
Corowa Shire	ns	-15.1	0.6	ns	-12.8	0.7
Cowra	ns	8.9	1.7	-17.2	ns	1.2
Deniliquin	ns	ns	1.4	ns	-7.0	1.0
Dubbo	ns	ns	1.8	ns	-7.7	1.4
Dungog	ns	-11.0	0.4	ns	2.2	0.6
Eurobodalla	-22.4	ns	0.9	ns	-4.6	1.0
Fairfield	ns	ns	0.9	ns	-4.1	0.8
Forbes	ns	ns	1.7	ns	ns	1.5
Gilgandra	ns	ns	1.8	ns	ns	1.1
Glen Innes Severn	ns	ns	1.0	63.5	ns	1.2
Gloucester	ns	ns	0.9	ns	ns	0.4
Gosford	ns	-3.1	0.8	ns	ns	1.0
Goulburn Mulwaree	ns	ns	1.3	ns	ns	0.9
Great Lakes	ns	ns	1.2	ns	-8.5	1.0
Greater Hume Shire	ns	ns	0.4	ns	ns	0.6
Greater Taree	-12.7	-6.0	1.2	ns	4.9	1.3
Griffith	ns	5.9	1.6	ns	ns	1.2
Gundagai	ns	ns	0.8	ns	ns	0.6
Gunnedah	ns	ns	1.5	16.1	ns	1.3
Guyra	ns	ns	1.0	ns	ns	0.6
Gwydir	ns	ns	0.5	ns	ns	0.5
Harden	ns	ns	0.8	ns	-6.6	0.5
Hawkesbury	ns	4.4	1.0	ns	-2.8	0.8
Hay	ns	-12.0	0.8	ns	-12.5	0.5
Holroyd	ns	ns	1.0	ns	-6.3	1.0
Hornsby	ns	ns	0.4	ns	-9.1	0.4
Hunters Hill	ns	ns	0.3	ns	-9.1	0.4
Hurstville	ns	-3.2	0.9	ns	ns	1.0
Inverell	ns	ns	1.7	ns	ns	1.0
Jerilderie	.	.	.	ns	-12.8	.
Junee	ns	ns	0.8	ns	ns	0.6
Kempsey	ns	ns	1.6	ns	ns	1.4
Kiama	ns	ns	0.5	ns	ns	0.6
Kogarah	ns	ns	0.4	ns	ns	0.4
Ku-ring-gai	ns	ns	0.2	-19.3	-4.0	0.5
Kyogle	ns	-8.1	1.5	ns	ns	0.8
Lachlan	ns	ns	1.6	68.0	ns	1.6
Lake Macquarie	ns	ns	0.8	-7.3	-3.9	0.9
Lane Cove	ns	ns	0.2	ns	-8.2	0.5
Leeton	ns	ns	1.2	ns	ns	1.0

**TABLE 1.3: TRENDS<sup>^</sup> IN RECORDED CRIMINAL INCIDENTS, VIOLENT AND PROPERTY OFFENCES, NSW LOCAL GOVERNMENT AREAS (LGAs), JANUARY 2006 TO DECEMBER 2010**

NSW LGAs	Violent Offences*			Property Offences*		
	Annual percentage change over Jan 2009 - Dec 2010	Average annual percentage change Jan 2006 - Dec 2010	Ratio <sup>#</sup> to NSW rate	Annual percentage change over Jan 2009 - Dec 2010	Average annual percentage change Jan 2006 - Dec 2010	Ratio <sup>#</sup> to NSW rate
Leichhardt	ns	-6.0	0.7	-6.4	-7.8	1.1
Lismore	ns	-5.6	1.4	ns	-8.8	0.9
Lithgow	-13.8	ns	1.3	ns	ns	1.0
Liverpool	ns	4.6	1.1	-10.7	-6.0	0.9
Liverpool Plains	ns	ns	1.2	23.1	6.3	0.6
Lockhart	.	.	0.3	ns	ns	0.4
Lord Howe Island	.	.	.	.	.	.
Maitland	ns	3.8	1.1	8.8	ns	1.2
Manly	ns	ns	0.9	ns	-4.5	1.0
Marrickville	ns	-8.2	0.8	ns	-7.5	1.1
Mid-Western Regional	ns	8.4	1.4	ns	2.7	0.8
Moree Plains	-16.5	ns	2.9	ns	-2.7	2.2
Mosman	ns	ns	0.3	-13.9	-9.1	0.5
Murray	ns	ns	0.4	ns	ns	0.7
Murrumbidgee	ns	ns	.	ns	-10.8	.
Muswellbrook	ns	ns	1.3	ns	ns	1.2
Nambucca	ns	ns	1.5	ns	ns	1.0
Narrabri	ns	-7.7	1.3	ns	ns	1.0
Narrandera	ns	ns	1.5	-35.7	ns	1.1
Narromine	ns	ns	1.6	ns	8.7	1.7
Newcastle	ns	-2.8	1.4	ns	-4.3	1.5
North Sydney	ns	ns	0.6	-21.2	-11.3	0.9
Oberon	ns	ns	0.7	ns	ns	0.7
Orange	ns	3.5	1.6	ns	ns	1.6
Palerang	ns	ns	0.4	-16.6	-4.6	0.4
Parkes	ns	ns	1.5	ns	ns	1.0
Parramatta	ns	ns	1.1	ns	-5.3	1.2
Penrith	ns	ns	1.3	ns	-4.0	1.0
Pittwater	ns	ns	0.5	-20.1	-8.8	0.6
Port Macquarie-Hastings	ns	7.8	1.1	ns	3.7	1.0
Port Stephens	ns	ns	0.9	-11.3	-5.3	1.1
Queanbeyan	ns	-7.5	0.8	ns	ns	0.9
Randwick	ns	-5.2	0.7	ns	-5.0	0.9
Richmond Valley	-21.6	-8.0	1.4	ns	-2.9	1.2
Rockdale	ns	5.0	0.7	ns	-5.5	0.7
Ryde	-24.6	-8.4	0.4	ns	-5.6	0.7
Shellharbour	ns	-3.5	0.8	ns	-4.3	0.9
Shoalhaven	ns	ns	1.2	ns	ns	1.1
Singleton	ns	ns	0.7	ns	4.3	1.0
Snowy River	ns	ns	0.6	ns	ns	1.0
Strathfield	ns	10.5	1.2	ns	-1.7	1.5
Sutherland Shire	ns	ns	0.6	ns	-6.3	0.6
Sydney	ns	-2.1	3.2	-8.8	-7.9	3.6
Tamworth Regional	ns	4.0	1.6	ns	ns	1.1
Temora	ns	ns	1.0	ns	ns	0.7
Tenterfield	ns	ns	1.1	ns	ns	1.3
The Hills Shire	ns	ns	0.4	-13.3	-5.7	0.5
Tumbarumba	ns	ns	0.5	ns	13.2	0.8
Tumut Shire	ns	-9.1	1.1	ns	ns	0.7
Tweed	ns	ns	0.7	ns	ns	1.0
Unincorporated Far West	.	.	.	.	.	.
Upper Hunter Shire	ns	10.0	0.7	25.7	7.2	0.8
Upper Lachlan Shire	ns	ns	0.3	-29.7	9.9	0.5
Uralla	ns	ns	0.6	ns	-8.0	0.5
Urana	.	.	.	ns	ns	.
Wagga Wagga	ns	ns	1.2	ns	ns	1.4
Wakool	ns	.	0.6	ns	ns	0.4
Walcha	ns	ns	0.6	ns	ns	0.5
Walgett	ns	-7.6	4.5	ns	ns	2.0
Warren	ns	ns	.	ns	ns	.
Warringah	ns	6.1	0.5	-10.6	-2.9	0.6
Warrumbungle Shire	ns	ns	1.3	ns	ns	0.8
Waverley	ns	-4.9	0.9	ns	-7.7	1.3
Weddin	ns	-15.9	0.5	ns	-11.3	0.4
Wellington	ns	ns	1.8	30.2	14.4	1.7
Wentworth	-24.1	ns	1.7	ns	ns	1.9
Willoughby	ns	ns	0.3	ns	-4.7	0.9
Wingecarribee	-17.1	ns	0.7	ns	-8.9	0.6
Wollondilly	ns	ns	0.7	ns	ns	0.5
Wollongong	-11.0	-4.8	0.9	ns	-8.1	0.9
Woolahra	ns	-4.4	0.5	-18.9	-10.6	1.0
Wyong	ns	ns	1.2	ns	-2.3	1.0
Yass Valley	ns	ns	0.5	ns	ns	0.5
Young	ns	ns	1.4	ns	ns	0.9
<b>NSW</b>	<b>Stable</b>	<b>Stable</b>	<b>1.0</b>	<b>-3.4</b>	<b>-4.3</b>	<b>1.0</b>

<sup>^</sup> For further explanation of **trend results**, see page 44, paragraphs 5 and 6.

\* For further explanation of **violent offences** and **property offences**, see page 44, paragraph 7.

# For further explanation of **rate calculation populations** and the **ratio to NSW rate**, see page 44, Note 3 and paragraph 8.

Sydney LGA can be considered a special case since the population used to calculate the rate is much lower than the population using the area for work and entertainment. This will be reflected in higher incident rates.



---

**SECTION 2:**

**OVERVIEW OF TRENDS  
IN RECORDED CRIME  
BY OFFENCE TYPE**

---

**TABLE 2.1: TRENDS<sup>^</sup> IN RECORDED CRIMINAL INCIDENTS FOR MAJOR OFFENCES,  
NSW, JANUARY 2006 TO DECEMBER 2010**

<i>Offence category</i>	<i>Trend result and annual percentage change over Jan 2009 - Dec 2010</i>	<i>Trend result and average annual percentage change over Jan 2006 - Dec 2010</i>
Murder*	Stable	Stable
Assault - domestic violence related	Stable	Stable
Assault - non-domestic violence related	Stable	Stable
Sexual assault	Stable	<b>Up by 4.3%</b>
Indecent assault, act of indecency and other sexual offences	Stable	Stable
Robbery without a weapon	Down by 6.9%	Down by 6.9%
Robbery with a firearm	Stable	Down by 7.2%
Robbery with a weapon not a firearm	Down by 11.0%	Down by 11.5%
Break and enter dwelling	Stable	Down by 3.2%
Break and enter non-dwelling	Down by 11.4%	Down by 10.9%
Motor vehicle theft	Down by 9.3%	Down by 7.9%
Steal from motor vehicle	Down by 4.8%	Down by 6.4%
Steal from retail store	Stable	<b>Up by 3.0%</b>
Steal from dwelling	Stable	Down by 3.1%
Steal from person	Down by 10.6%	Down by 6.8%
Fraud	Stable	Stable
Malicious damage to property	Down by 10.1%	Down by 4.3%

<sup>^</sup> For further explanation of **trend results**, see page 44, paragraphs 5 and 6.

\* For murder, the trend test is applied to the monthly number of recorded victims rather than criminal incidents.



**TABLE 2.2: PERIODIC TRENDS<sup>^</sup> IN RECORDED CRIMINAL INCIDENTS FOR MAJOR OFFENCES, NSW, JANUARY 2005 TO DECEMBER 2010**

<i>Offence category</i>	<i>Trend result and annual percentage change</i>				
	<i>Jan 2005 - Dec 2006</i>	<i>Jan 2006 - Dec 2007</i>	<i>Jan 2007 - Dec 2008</i>	<i>Jan 2008 - Dec 2009</i>	<i>Jan 2009 - Dec 2010</i>
Murder*	Stable	Stable	Stable	Stable	Stable
Assault - domestic violence related	Stable	Stable	Stable	Stable	Stable
Assault - non-domestic violence related	Stable	Stable	Stable	Stable	Stable
Sexual assault	Stable	6.7%	Stable	Stable	Stable
Indecent assault, act of indecency and other sexual offences	Stable	Stable	Stable	Stable	Stable
Robbery without a weapon	Stable	Stable	Stable	-15.3%	-6.9%
Robbery with a firearm	Stable	Stable	-29.9%	Stable	Stable
Robbery with a weapon not a firearm	Stable	Stable	-17.9%	-10.3%	-11.0%
Break and enter dwelling	-3.8%	Stable	-5.0%	-6.1%	Stable
Break and enter non-dwelling	-1.7%	-10.0%	-5.8%	-16.2%	-11.4%
Motor vehicle theft	-2.7%	-5.5%	-8.2%	-8.6%	-9.3%
Steal from motor vehicle	Stable	6.7%	-6.9%	-18.7%	-4.8%
Steal from retail store	Stable	Stable	8.6%	Stable	Stable
Steal from dwelling	Stable	Stable	Stable	Stable	Stable
Steal from person	Stable	Stable	-11.2%	-4.6%	-10.6%
Fraud	Stable	Stable	17.7%	-9.6%	Stable
Malicious damage to property	5.4%	Stable	2.1%	Stable	-10.1%

<sup>^</sup> For further explanation of **trend results**, see page 44, paragraphs 5 and 6.

\* For murder, the trend test is applied to the monthly number of recorded victims rather than criminal incidents.

**TABLE 2.3: NUMBER AND TRENDS<sup>^</sup> IN RECORDED CRIMINAL INCIDENTS FOR ALL OFFENCES, NSW, JANUARY 2009 TO DECEMBER 2010**

Offence Category	Number of recorded criminal incidents		Trend <sup>^</sup> over 24-month period		
	Jan 2009 - Dec 2009	Jan 2010 - Dec 2010	Trend test result	Percentage change	
Homicide	Murder*	85	71	Stable	
	Attempted murder	44	32	Stable	
	Murder accessory, conspiracy	7	8	.	
	Manslaughter *	10	10	.	
Assault	Domestic violence related assault	26,217	26,006	Stable	
	Non-domestic violence related assault	40,616	39,474	Stable	
	Assault Police	2,742	2,359	Down	-14.0%
Sexual offences	Sexual assault	4,386	4,492	Stable	
	Indecent assault, act of indecency and other sexual offences	5,327	5,216	Stable	
Abduction and kidnapping		328	291	Stable	
Robbery	Robbery without a weapon	3,770	3,510	Down	-6.9%
	Robbery with a firearm	461	410	Stable	
	Robbery with a weapon not a firearm	1,671	1,487	Down	-11.0%
Blackmail and extortion		159	130	Stable	
Harassment, threatening behaviour and private nuisance		28,337	28,873	Stable	
Other offences against the person		1,452	1,360	Stable	
Theft	Break and enter dwelling	41,588	41,215	Stable	
	Break and enter non-dwelling	19,239	17,046	Down	-11.4%
	Receiving or handling stolen goods	5,254	5,493	Stable	
	Motor vehicle theft	22,331	20,256	Down	-9.3%
	Steal from motor vehicle	47,036	44,772	Down	-4.8%
	Steal from retail store	20,631	20,377	Stable	
	Steal from dwelling	21,310	20,849	Stable	
	Steal from person	9,868	8,820	Down	-10.6%
	Stock theft	512	537	Stable	
	Fraud	35,478	35,774	Stable	
Other theft	35,048	34,674	Stable		
Arson		7,240	5,831	Down	-19.5%
Malicious damage to property		101,619	91,321	Down	-10.1%
Drug offences	Possession and/or use of cocaine	600	740	Up	23.3%
	Possession and/or use of narcotics	907	969	Stable	
	Possession and/or use of cannabis	13,658	18,693	Up	36.9%
	Possession and/or use of amphetamines	1,834	2,834	Up	54.5%
	Possession and/or use of ecstasy	1,838	1,802	Stable	
	Possession and/or use of other drugs	1,869	2,660	Up	42.3%
	Dealing, trafficking in cocaine	212	199	Stable	
	Dealing, trafficking in narcotics	385	421	Stable	
	Dealing, trafficking in cannabis	506	675	Up	33.4%
	Dealing, trafficking in amphetamines	551	899	Up	63.2%
	Dealing, trafficking in ecstasy	518	417	Stable	
	Dealing, trafficking in other drugs	154	232	Up	50.6%
	Cultivating cannabis	1,184	1,234	Stable	
Manufacture drug	65	93	Stable		
Importing drugs	26	36	Stable		
Other drug offences	3,443	3,864	Up	12.2%	
Prohibited and regulated weapons offences		8,149	7,693	Down	-5.6%
Disorderly conduct	Trespass	8,668	8,662	Stable	
	Offensive conduct	9,063	9,331	Stable	
	Offensive language	6,771	6,290	Down	-7.1%
	Criminal intent	1,502	1,527	Stable	
Betting and gaming offences		330	227	Stable	
Liquor offences		18,182	17,328	Stable	
Pornography offences		279	239	Stable	
Prostitution offences		176	275	Up	56.3%
Against justice procedures	Escape custody	189	184	Stable	
	Breach Apprehended Violence Order	11,932	12,115	Stable	
	Breach bail conditions	24,921	26,777	Up	7.4%
	Fail to appear	1,005	1,207	Up	20.1%
	Resist or hinder officer	7,649	7,041	Stable	
	Other offences against justice procedures	615	438	Down	-28.8%
Transport regulatory offences		42,648	53,939	Up	26.5%
Other offences		15,178	15,357	Stable	

<sup>^</sup> For further explanation of trend results, see page 44, paragraphs 5 and 6.

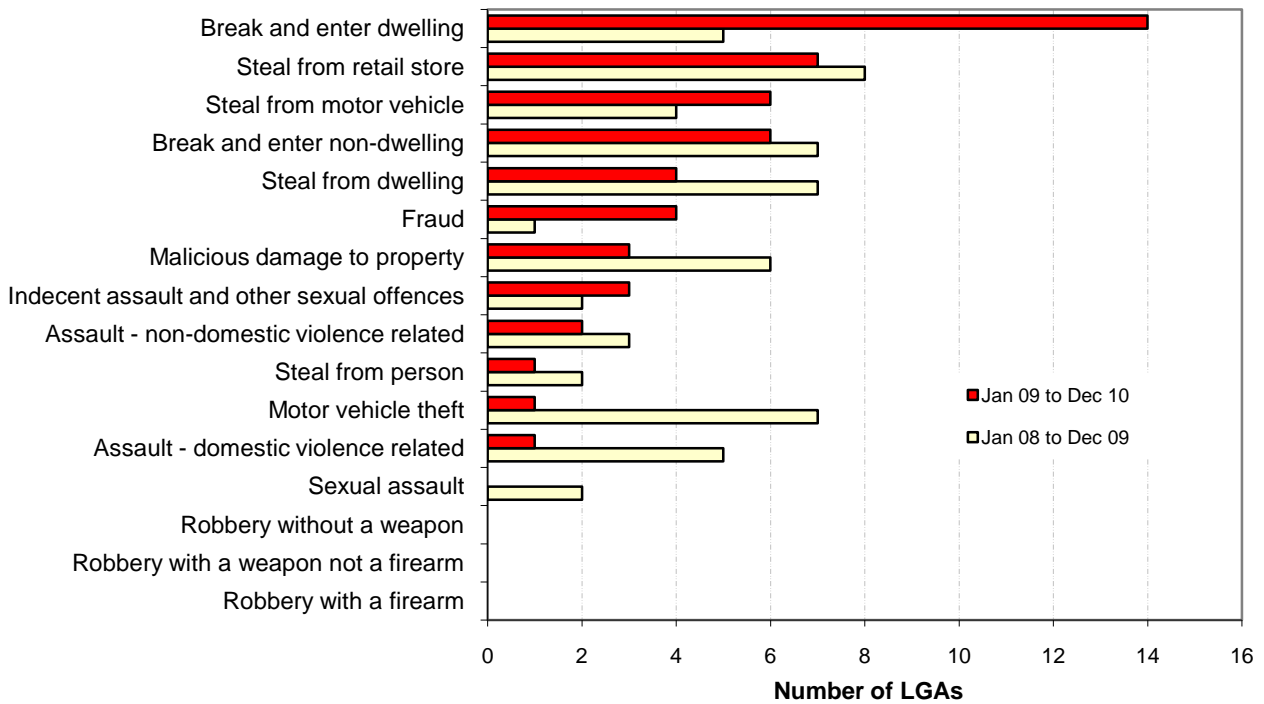
\* For murder and manslaughter incidents, the trend test is applied to the monthly number of recorded victims rather than criminal incidents.

**TABLE 2.4: NUMBER AND OUTCOME<sup>^</sup> OF 24-MONTH TREND TESTS FOR MAJOR OFFENCES, NSW LOCAL GOVERNMENT AREAS (LGAs), ALL REPORTS 2004 TO 2010**

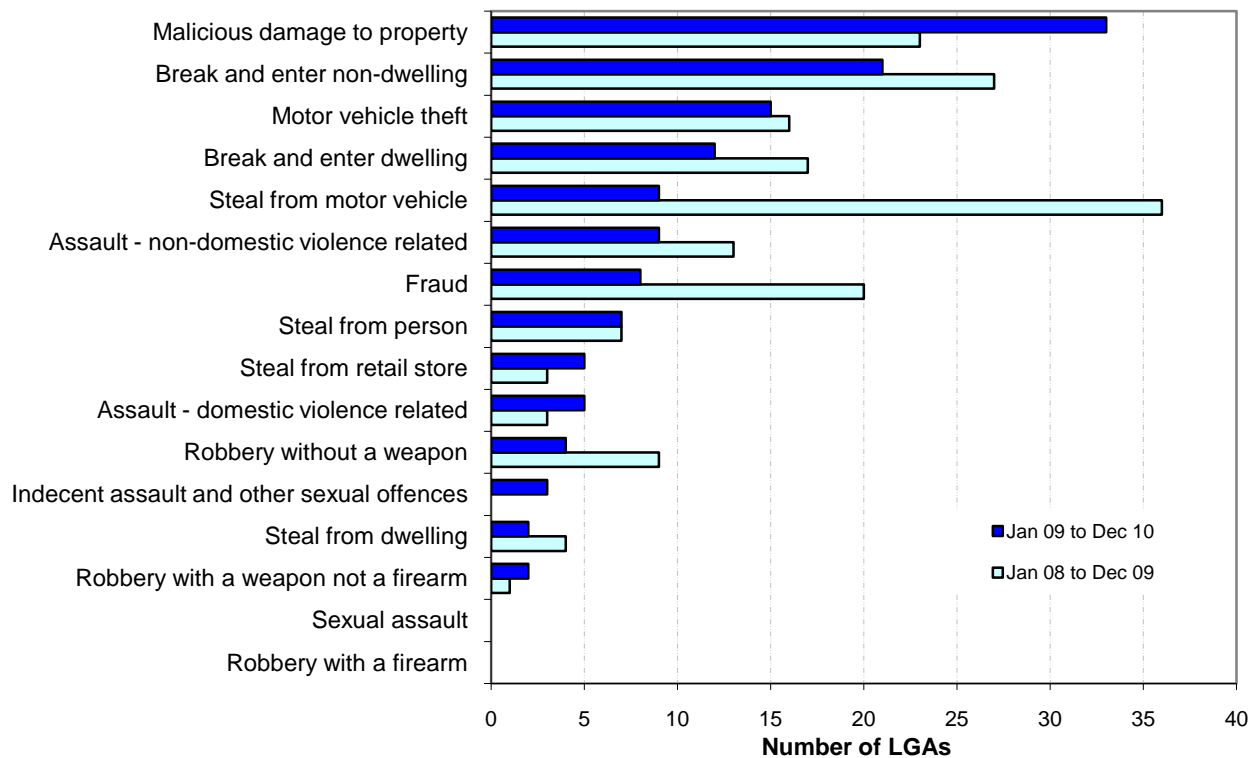
	<i>Final month for 24-month trend test</i>	<i>Number of LGAs</i>	<i>Number of trend tests</i>	<i>Stable trends (%)</i>	<i>Downward trends (%)</i>	<i>Upward trends (%)</i>
<b>2004</b>	March	174	1,428	80.5	15.6	3.9
	June	174	1,421	80.1	18.2	1.7
	September	174	1,415	76.7	21.6	1.8
	<b>December</b>	<b>173</b>	<b>1,397</b>	<b>78.5</b>	<b>18.2</b>	<b>3.4</b>
<b>2005</b>	March	167	1,371	79.2	17.0	3.8
	June	167	1,358	80.6	15.4	4.1
	September	167	1,364	79.8	15.8	4.4
	<b>December</b>	<b>167</b>	<b>1,357</b>	<b>83.3</b>	<b>11.9</b>	<b>4.9</b>
<b>2006</b>	March	167	1,464	85.9	7.4	6.7
	June	154	1,432	87.7	7.8	4.5
	September	154	1,440	86.2	9.6	4.2
	<b>December</b>	<b>154</b>	<b>1,442</b>	<b>86.6</b>	<b>7.8</b>	<b>5.6</b>
<b>2007</b>	March	154	1,450	86.0	6.8	7.2
	June	154	1,447	88.3	6.8	5.0
	September	154	1,440	84.9	10.4	4.7
	<b>December</b>	<b>154</b>	<b>1,446</b>	<b>87.3</b>	<b>7.8</b>	<b>4.9</b>
<b>2008</b>	March	154	1,429	88.0	6.3	5.7
	June	154	1,430	86.6	8.3	5.2
	September	154	1,422	82.3	12.5	5.2
	<b>December</b>	<b>154</b>	<b>1,422</b>	<b>84.0</b>	<b>10.3</b>	<b>5.6</b>
<b>2009</b>	March	154	1,408	84.6	9.9	5.5
	June	154	1,412	83.9	11.5	4.5
	September	154	1,404	81.4	14.2	4.4
	<b>December</b>	<b>154</b>	<b>1,414</b>	<b>83.2</b>	<b>12.7</b>	<b>4.1</b>
<b>2010</b>	March	154	1,392	82.9	11.8	5.3
	June	154	1,397	84.3	11.8	3.9
	September	<b>154</b>	1,411	82.3	13.7	4.0
	<b>December</b>	<b>154</b>	<b>1,397</b>	<b>86.6</b>	<b>9.7</b>	<b>3.7</b>

<sup>^</sup> This table summarises the aggregate outcomes of statistical tests for significant upward or downward trends in the number of recorded criminal incidents in major offence categories over a 24-month period across all NSW LGAs with a population of 3,000 or more. The trend test used is Kendall's rank-order correlation test. A trend test was not performed if there were fewer than 20 incidents in either of the two years for the period in question, hence no trend tests for **murder** were calculated for this table. Tests ending in 2004 and 2005 were carried out on 15 major offence categories (during this period **assault** was a single offence category). Tests ending in 2006 and later years were carried out on 16 major offence categories (**assault** incidents separated into **domestic violence related** and **non-domestic violence related**). **Assault Police** incidents have been recorded separately from the two major assault series from 2008 onwards.

**FIGURE 2.1A: NUMBER OF NSW LGAs WITH SIGNIFICANT UPWARD TRENDS<sup>^</sup>, MAJOR OFFENCES, JANUARY 2008 TO DECEMBER 2009 AND JANUARY 2009 TO DECEMBER 2010**



**FIGURE 2.1B: NUMBER OF NSW LGAs WITH SIGNIFICANT DOWNWARD TRENDS<sup>^</sup>, MAJOR OFFENCES, JANUARY 2008 TO DECEMBER 2009 AND JANUARY 2009 TO DECEMBER 2010**



<sup>^</sup> For further explanation of **trend results**, see page 44, paragraphs 5 and 6.

---

**SECTION 3:**

**TRENDS, RATE COMPARISONS AND  
RECORDED CRIMINAL INCIDENTS  
FOR MAJOR OFFENCES  
NSW REGIONS AND LGAS  
2009 AND 2010**

---

**TABLE 3.1A: TRENDS<sup>a</sup> IN RECORDED CRIMINAL INCIDENTS FOR MAJOR OFFENCES, NSW SDs, JANUARY 2009 TO DECEMBER 2010**

<b>Statistical Division</b>	<b>Murder*</b>	<b>Assault - domestic violence related</b>	<b>Assault - non-domestic violence related</b>	<b>Sexual assault</b>	<b>Indecent assault, act of indecency and other sexual offences</b>	<b>Robbery without a weapon</b>	<b>Robbery with a firearm</b>	<b>Robbery with a weapon not a firearm</b>	<b>Break and enter dwelling</b>	<b>Break and enter non-dwelling</b>	<b>Motor vehicle theft</b>	<b>Steal from motor vehicle</b>	<b>Steal from retail store</b>	<b>Steal from dwelling</b>	<b>Steal from person</b>	<b>Fraud</b>	<b>Malicious damage to property</b>
Sydney	ns	ns	ns	ns	ns	-7.7	ns	-12.2	-4.3	-13.6	-8.6	-8.8	ns	ns	-11.4	ns	-9.3
Hunter	.	ns	ns	ns	ns	ns	.	ns	ns	-16.6	-12.9	ns	ns	ns	ns	ns	ns
Illawarra	.	ns	-13.0	ns	ns	ns	.	ns	ns	15.8	ns	ns	-17.6	ns	ns	ns	-13.8
Richmond-Tweed	.	-16.5	ns	ns	ns	ns	.	.	ns	ns	ns	ns	ns	ns	-30.0	ns	-15.9
Mid-North Coast	.	ns	ns	ns	ns	ns	.	ns	ns	ns	-19.4	ns	27.3	ns	ns	ns	ns
Northern	.	ns	ns	ns	ns	ns	.	.	19.2	ns	ns	ns	ns	ns	ns	ns	ns
North Western	.	ns	ns	ns	ns	ns	.	.	ns	-15.2	-22.1	2.2	13.7	ns	ns	-22.5	ns
Central West	.	ns	ns	ns	ns	ns	.	.	ns	-3.7	ns	32.6	ns	ns	ns	40.4	-12.8
South Eastern	.	ns	ns	ns	ns	ns	.	.	ns	ns	ns	ns	33.3	ns	ns	ns	-17.7
Murrumbidgee	.	ns	ns	ns	ns	ns	.	.	ns	-19.6	ns	10.3	12.2	ns	ns	-16.2	-13.0
Murray	.	ns	ns	ns	ns	ns	.	.	ns	ns	ns	ns	ns	ns	ns	ns	ns
Far West	.	ns	ns	ns	ns	ns	.	.	ns	ns	ns	ns	ns	-31.9	.	42.2	ns
<b>NSW</b>	<b>ns</b>	<b>ns</b>	<b>ns</b>	<b>ns</b>	<b>ns</b>	<b>-6.9</b>	<b>ns</b>	<b>-11.0</b>	<b>ns</b>	<b>-11.4</b>	<b>-9.3</b>	<b>-4.8</b>	<b>ns</b>	<b>ns</b>	<b>-10.6</b>	<b>ns</b>	<b>-10.1</b>

<sup>a</sup> For further explanation of **trend results**, see page 44, paragraphs 5 and 6.

\* Any trend test for the offence of murder is for the number of victims, not incidents.

**TABLE 3.1B: RATIO TO NSW RATE<sup>a</sup> OF RECORDED CRIMINAL INCIDENTS PER 100,000 POPULATION, MAJOR OFFENCES, NSW SDs, 2010**

<b>Statistical Division</b>	<b>Murder*</b>	<b>Assault - domestic violence related</b>	<b>Assault - non-domestic violence related</b>	<b>Sexual assault</b>	<b>Indecent assault, act of indecency and other sexual offences</b>	<b>Robbery without a weapon</b>	<b>Robbery with a firearm</b>	<b>Robbery with a weapon not a firearm</b>	<b>Break and enter dwelling</b>	<b>Break and enter non-dwelling</b>	<b>Motor vehicle theft</b>	<b>Steal from motor vehicle</b>	<b>Steal from retail store</b>	<b>Steal from dwelling</b>	<b>Steal from person</b>	<b>Fraud</b>	<b>Malicious damage to property</b>
Sydney	1.0	0.9	0.9	0.8	0.9	1.3	1.3	1.3	0.9	0.7	1.0	1.0	1.0	0.8	1.3	1.2	0.9
Hunter	0.9	1.0	1.1	1.2	1.1	0.6	0.8	0.6	1.0	1.6	1.3	1.2	1.0	1.3	0.7	0.9	1.3
Illawarra	0.7	0.9	0.9	1.1	1.1	0.6	0.4	0.6	1.0	1.2	0.9	0.9	0.9	1.0	0.6	0.5	1.1
Richmond-Tweed	1.2	1.0	1.1	1.3	1.2	0.5	0.6	0.4	1.0	1.6	0.8	1.0	0.9	1.3	0.5	0.5	1.0
Mid-North Coast	1.3	1.2	1.1	1.5	1.2	0.4	0.4	0.5	1.3	1.6	1.0	1.1	1.0	1.5	0.5	0.5	1.1
Northern	2.2	1.6	1.5	1.6	1.6	0.6	0.3	0.3	1.6	2.0	0.8	1.0	1.0	1.6	0.3	0.6	1.4
North Western	1.7	2.7	2.0	2.3	1.9	0.5	0.1	0.4	2.0	2.0	1.0	1.4	1.2	2.0	0.5	0.6	1.9
Central West	0.5	1.4	1.3	1.5	1.0	0.4	0.2	0.4	1.3	1.5	0.8	1.3	1.0	1.6	0.4	0.6	1.5
South Eastern	0.5	0.9	0.8	1.2	1.0	0.2	0.1	0.3	0.7	1.1	0.5	0.8	0.8	1.0	0.3	0.5	1.0
Murrumbidgee	1.3	1.2	1.3	1.4	1.4	0.3	0.0	0.5	1.2	1.6	0.9	1.1	1.0	1.8	0.4	0.5	1.3
Murray	0.8	1.1	1.0	1.2	1.1	0.3	0.0	0.5	1.3	2.2	0.8	1.2	0.8	1.7	0.5	0.5	1.3
Far West	0.0	3.3	1.7	1.9	0.8	0.5	0.0	0.0	2.1	1.4	0.7	0.9	0.8	1.9	0.4	0.6	1.7
<b>NSW</b>	<b>1.0</b>	<b>1.0</b>	<b>1.0</b>	<b>1.0</b>	<b>1.0</b>	<b>1.0</b>	<b>1.0</b>	<b>1.0</b>	<b>1.0</b>	<b>1.0</b>	<b>1.0</b>	<b>1.0</b>	<b>1.0</b>	<b>1.0</b>	<b>1.0</b>	<b>1.0</b>	<b>1.0</b>

<sup>a</sup> For further explanation of **rate calculation populations** and the **ratio to NSW rate**, see page 44, Note 3 and paragraph 8.

\* The rate calculations on the offence of murder is for the number of victims, not incidents.

**TABLE 3.1C: NUMBER OF RECORDED CRIMINAL INCIDENTS FOR MAJOR OFFENCES, NSW SDs, 2010**

<b>Statistical Division 2010</b>	<b>Murder*</b>	<b>Assault - domestic violence related</b>	<b>Assault - non-domestic violence related</b>	<b>Sexual assault</b>	<b>Indecent assault, act of indecency and other sexual offences</b>	<b>Robbery without a weapon</b>	<b>Robbery with a firearm</b>	<b>Robbery with a weapon not a firearm</b>	<b>Break and enter dwelling</b>	<b>Break and enter non-dwelling</b>	<b>Motor vehicle theft</b>	<b>Steal from motor vehicle</b>	<b>Steal from retail store</b>	<b>Steal from dwelling</b>	<b>Steal from person</b>	<b>Fraud</b>	<b>Malicious damage to property</b>
Sydney	43	14,627	22,189	2,264	2,911	2,876	347	1,231	23,523	7,252	13,154	26,947	13,173	10,231	7,176	27,751	49,720
Hunter	6	2,389	3,918	488	505	193	30	77	3,847	2,461	2,373	4,906	1,833	2,489	519	2,770	10,427
Illawarra	3	1,481	2,159	286	342	131	9	51	2,529	1,204	1,095	2,303	1,151	1,206	309	1,135	5,868
Richmond-Tweed	3	874	1,466	200	218	58	9	18	1,394	899	517	1,527	650	924	156	644	3,015
Mid-North Coast	4	1,388	1,902	291	277	60	8	33	2,335	1,206	870	2,089	882	1,377	192	764	4,515
Northern	4	1,080	1,495	185	210	51	3	12	1,673	893	423	1,147	522	863	74	526	3,340
North Western	2	1,147	1,299	168	166	32	1	9	1,365	571	346	1,063	407	698	66	328	2,894
Central West	1	903	1,351	175	139	39	2	16	1,383	678	440	1,526	522	845	91	587	3,437
South Eastern	1	701	1,012	168	155	22	1	12	878	549	330	1,104	476	659	81	568	2,806
Murrumbidgee	2	667	1,114	135	168	21	0	15	1,126	619	384	1,105	432	844	70	358	2,638
Murray	1	470	644	92	96	20	0	12	892	633	278	927	277	587	74	274	2,034
Far West	0	276	212	27	14	6	0	0	270	77	44	128	52	126	10	64	501
<b>NSW</b>	<b>71</b>	<b>26,006</b>	<b>39,474</b>	<b>4,492</b>	<b>5,216</b>	<b>3,510</b>	<b>410</b>	<b>1,487</b>	<b>41,215</b>	<b>17,046</b>	<b>20,256</b>	<b>44,772</b>	<b>20,377</b>	<b>20,849</b>	<b>8,820</b>	<b>35,774</b>	<b>91,321</b>

\* Number of victims.

**TABLE 3.1D: NUMBER OF RECORDED CRIMINAL INCIDENTS FOR MAJOR OFFENCES, NSW SDs, 2009**

<b>Statistical Division 2009</b>	<b>Murder*</b>	<b>Assault - domestic violence related</b>	<b>Assault - non-domestic violence related</b>	<b>Sexual assault</b>	<b>Indecent assault, act of indecency and other sexual offences</b>	<b>Robbery without a weapon</b>	<b>Robbery with a firearm</b>	<b>Robbery with a weapon not a firearm</b>	<b>Break and enter dwelling</b>	<b>Break and enter non-dwelling</b>	<b>Motor vehicle theft</b>	<b>Steal from motor vehicle</b>	<b>Steal from retail store</b>	<b>Steal from dwelling</b>	<b>Steal from person</b>	<b>Fraud</b>	<b>Malicious damage to property</b>
Sydney	52	14,349	22,566	2,182	2,970	3,117	439	1,402	24,575	8,395	14,392	29,558	13,614	10,193	8,100	27,836	54,845
Hunter	7	2,554	3,863	469	491	218	6	107	4,207	2,951	2,725	5,171	1,819	2,542	514	2,238	11,479
Illawarra	2	1,563	2,481	306	296	129	8	54	2,300	1,040	1,176	2,335	1,397	1,353	331	1,178	6,811
Richmond-Tweed	4	1,047	1,623	218	227	69	2	15	1,194	967	574	1,532	704	1,087	223	770	3,584
Mid-North Coast	5	1,357	2,007	291	291	65	4	34	2,138	1,416	1,079	2,007	693	1,357	210	794	5,057
Northern	5	1,071	1,510	188	180	37	2	8	1,403	883	428	1,101	539	881	93	425	3,631
North Western	2	1,030	1,285	137	191	24	0	12	1,308	673	444	1,040	358	680	53	423	2,957
Central West	2	957	1,454	164	179	40	0	14	1,322	704	399	1,151	425	867	89	418	3,943
South Eastern	1	745	1,170	160	198	23	0	13	944	721	361	1,133	357	734	95	632	3,408
Murrumbidgee	3	747	1,106	121	152	26	0	7	1,030	770	380	1,002	385	823	80	427	3,033
Murray	2	511	645	93	107	19	0	5	876	621	328	861	308	608	70	286	2,225
Far West	0	284	223	24	35	3	0	0	291	94	45	142	32	185	9	45	517
<b>NSW</b>	<b>85</b>	<b>26,217</b>	<b>40,616</b>	<b>4,386</b>	<b>5,327</b>	<b>3,770</b>	<b>461</b>	<b>1,671</b>	<b>41,588</b>	<b>19,239</b>	<b>22,331</b>	<b>47,036</b>	<b>20,631</b>	<b>21,310</b>	<b>9,868</b>	<b>35,478</b>	<b>101,619</b>

\* Number of victims.

**TABLE 3.2A: TRENDS<sup>A</sup> IN RECORDED CRIMINAL INCIDENTS FOR MAJOR OFFENCES, NSW METROPOLITAN SSDs, JANUARY 2009 TO DECEMBER 2010**

Metropolitan Statistical Subdivision	Murder*	Assault - domestic violence related	Assault - non-domestic violence related	Sexual assault	Indecent assault, act of indecency and other sexual offences	Robbery without a weapon	Robbery with a firearm	Robbery with a weapon not a firearm	Break and enter dwelling	Break and enter non-dwelling	Motor vehicle theft	Steal from motor vehicle	Steal from retail store	Steal from dwelling	Steal from person	Fraud	Malicious damage to property
Inner Sydney	ns	ns	ns	ns	ns	-22.6	ns	-20.6	-9.2	-14.2	-7.5	-29.0	ns	ns	ns	ns	-7.3
Eastern Suburbs	ns	ns	ns	ns	ns	ns	ns	-45.0	ns	-43.8	-3.0	ns	ns	-12.1	-25.5	-11.8	ns
St George-Sutherland	ns	ns	ns	ns	ns	ns	ns	ns	ns	ns	ns	ns	-15.2	ns	ns	ns	ns
Canterbury-Bankstown	8.2	ns	ns	ns	ns	ns	ns	ns	ns	ns	ns	-13.4	-22.1	ns	-24.7	ns	ns
Fairfield-Liverpool	ns	ns	ns	ns	ns	ns	-19.6	ns	ns	-17.7	-10.8	-15.3	ns	ns	-9.5	ns	ns
Outer South Western Sydney	ns	ns	ns	ns	ns	ns	ns	ns	ns	ns	-6.0	ns	ns	ns	-14.5	ns	-20.0
Inner Western Sydney	ns	ns	ns	ns	ns	ns	ns	ns	ns	ns	ns	ns	ns	ns	-15.2	ns	ns
Central Western Sydney	ns	ns	ns	ns	ns	ns	ns	ns	ns	ns	ns	-9.3	-14.8	ns	ns	ns	ns
Outer Western Sydney	ns	ns	ns	ns	ns	ns	ns	ns	ns	-22.4	-11.9	ns	ns	ns	ns	-6.7	-10.8
Blacktown	ns	ns	ns	ns	ns	ns	ns	ns	-17.7	ns	-15.6	11.9	ns	14.6	ns	ns	ns
Lower Northern Sydney	ns	ns	ns	ns	ns	ns	ns	ns	ns	-32.7	ns	ns	ns	ns	-15.7	-16.8	ns
Central Northern Sydney	ns	ns	ns	ns	ns	-26.8	ns	ns	-24.0	-35.1	-20.8	-17.5	ns	ns	ns	ns	-16.6
Northern Beaches	ns	ns	ns	ns	-27.0	ns	ns	ns	ns	ns	ns	ns	ns	ns	ns	ns	-19.3
Central Coast	ns	ns	ns	ns	ns	ns	ns	ns	ns	ns	ns	ns	ns	ns	ns	ns	ns
Newcastle	ns	ns	ns	ns	ns	ns	ns	ns	ns	-17.5	ns	ns	ns	ns	ns	ns	ns
Wollongong	ns	-13.7	ns	ns	ns	ns	ns	ns	ns	ns	ns	ns	-24.7	ns	ns	ns	-15.7

<sup>A</sup> For further explanation of **trend results**, see page 44, paragraphs 5 and 6.

\* Any trend test for the offence of murder is for the number of victims, not incidents.

**TABLE 3.2B: RATIO TO NSW RATE<sup>A</sup> OF RECORDED CRIMINAL INCIDENTS PER 100,000 POPULATION, MAJOR OFFENCES, NSW METROPOLITAN SSDs, 2010**

Metropolitan Statistical Subdivision	Murder*	Assault - domestic violence related	Assault - non-domestic violence related	Sexual assault	Indecent assault, act of indecency and other sexual offences	Robbery without a weapon	Robbery with a firearm	Robbery with a weapon not a firearm	Break and enter dwelling	Break and enter non-dwelling	Motor vehicle theft	Steal from motor vehicle	Steal from retail store	Steal from dwelling	Steal from person	Fraud	Malicious damage to property
Inner Sydney	2.6	1.1	2.5	1.2	1.7	3.8	3.5	3.1	1.1	1.4	1.4	2.0	2.7	1.6	8.0	3.3	1.3
Eastern Suburbs	0.8	0.6	0.8	0.5	0.7	1.0	0.5	0.6	1.0	0.4	1.0	0.9	0.9	0.9	1.4	1.3	0.7
St George-Sutherland	0.2	0.7	0.6	0.4	0.7	1.0	0.8	1.0	0.6	0.4	0.8	0.7	0.7	0.5	0.6	0.9	0.8
Canterbury-Bankstown	0.9	0.9	0.7	0.5	0.6	1.3	2.8	2.1	0.9	0.6	1.5	0.8	0.6	0.5	0.5	1.5	0.7
Fairfield-Liverpool	1.9	1.1	0.8	0.8	1.0	1.4	2.1	1.6	1.1	0.6	1.3	0.8	0.9	0.5	0.7	1.0	0.8
Outer South Western Sydney	1.2	1.5	1.1	1.2	1.0	1.2	0.8	1.5	1.2	0.8	1.3	0.9	0.9	1.0	0.6	0.7	1.2
Inner Western Sydney	0.0	0.6	0.6	0.6	0.6	1.8	2.1	2.0	0.9	0.5	1.1	1.1	0.9	0.6	1.0	1.8	0.6
Central Western Sydney	1.2	1.1	0.9	0.8	1.0	2.1	2.7	2.6	1.3	0.6	1.4	1.0	1.0	0.7	1.1	1.7	0.7
Outer Western Sydney	0.9	1.2	1.1	1.3	1.1	0.9	0.6	1.0	0.8	0.7	1.2	1.1	0.9	1.0	0.6	0.9	1.2
Blacktown	0.7	1.6	1.1	1.2	1.2	1.8	0.7	1.6	1.3	0.7	1.4	1.2	1.2	1.0	0.9	1.5	1.3
Lower Northern Sydney	1.0	0.3	0.4	0.3	0.6	0.6	1.0	0.4	0.7	0.5	0.4	0.7	1.1	0.6	0.6	1.0	0.5
Central Northern Sydney	0.0	0.4	0.3	0.5	0.4	0.3	0.5	0.3	0.6	0.4	0.3	0.5	0.6	0.5	0.3	0.6	0.5
Northern Beaches	0.4	0.4	0.7	0.5	0.6	0.7	0.2	0.3	0.5	0.5	0.5	0.7	0.8	0.7	0.7	0.6	0.7
Central Coast	1.6	1.1	1.0	1.5	1.1	0.6	0.2	0.4	1.0	1.4	1.1	1.1	1.2	1.0	0.8	0.7	1.2
Newcastle	1.1	1.0	1.1	1.2	1.0	0.7	0.9	0.7	1.0	1.6	1.4	1.3	1.1	1.3	0.7	0.9	1.3
Wollongong	0.3	0.8	0.9	1.0	1.1	0.7	0.4	0.7	0.9	1.0	1.0	0.9	1.0	0.9	0.7	0.6	1.0

<sup>A</sup> For further explanation of **rate calculation populations** and the **ratio to NSW rate**, see page 44, Note 3 and paragraph 8.

\* The rate calculations on the offence of murder is for the number of victims, not incidents.



**TABLE 3.2C: NUMBER OF RECORDED CRIMINAL INCIDENTS FOR MAJOR OFFENCES, NSW METROPOLITAN SSDs, 2010**

<b>Metropolitan Statistical Subdivision 2010</b>	<b>Murder*</b>	<b>Assault - domestic violence related</b>	<b>Assault - non-domestic violence related</b>	<b>Sexual assault</b>	<b>Indecent assault, act of indecency and other sexual offences</b>	<b>Robbery without a weapon</b>	<b>Robbery with a firearm</b>	<b>Robbery with a weapon not a firearm</b>	<b>Break and enter dwelling</b>	<b>Break and enter non-dwelling</b>	<b>Motor vehicle theft</b>	<b>Steal from motor vehicle</b>	<b>Steal from retail store</b>	<b>Steal from dwelling</b>	<b>Steal from person</b>	<b>Fraud</b>	<b>Malicious damage to property</b>
Inner Sydney	9	1,424	4,821	262	440	652	71	224	2,208	1,183	1,393	4,406	2,701	1,602	3,449	5,849	5,696
Eastern Suburbs	2	535	1,168	81	136	129	7	33	1,421	216	701	1,463	683	660	432	1,660	2,402
St George-Sutherland	1	1,122	1,571	121	219	231	21	94	1,498	491	1,007	2,060	856	686	327	2,018	4,729
Canterbury-Bankstown	3	1,119	1,223	111	142	207	53	144	1,690	459	1,433	1,727	549	508	210	2,460	3,000
Fairfield-Liverpool	7	1,527	1,632	199	266	264	45	129	2,439	534	1,393	1,986	1,013	604	343	1,915	3,692
Outer South Western Sydney	3	1,376	1,465	189	188	149	12	76	1,702	479	947	1,419	664	748	177	934	3,872
Inner Western Sydney	0	407	618	67	86	164	23	80	1,031	238	615	1,341	472	312	235	1,680	1,495
Central Western Sydney	4	1,387	1,793	179	259	350	53	186	2,551	533	1,391	2,085	971	750	481	2,856	3,293
Outer Western Sydney	3	1,440	1,956	258	270	145	12	65	1,540	524	1,077	2,237	837	911	252	1,395	4,904
Blacktown	2	1,737	1,851	228	267	271	12	103	2,214	475	1,162	2,165	1,060	865	344	2,226	4,978
Lower Northern Sydney	3	361	698	67	136	86	18	28	1,228	387	384	1,356	1,021	518	237	1,516	2,017
Central Northern Sydney	0	589	771	134	142	60	14	26	1,460	409	358	1,330	750	619	140	1,352	2,781
Northern Beaches	1	390	884	71	103	80	3	14	697	279	313	1,127	546	517	218	766	2,158
Central Coast	5	1,213	1,738	297	257	88	3	29	1,844	1,045	980	2,245	1,050	931	331	1,124	4,703
Newcastle	6	1,980	3,402	406	411	175	29	74	3,275	2,004	2,107	4,493	1,676	2,042	479	2,470	8,929
Wollongong	1	862	1,375	188	231	94	6	42	1,568	665	791	1,550	813	732	239	854	3,669

\* Number of victims.

**TABLE 3.2D: NUMBER OF RECORDED CRIMINAL INCIDENTS FOR MAJOR OFFENCES, NSW METROPOLITAN SSDs, 2009**

<b>Metropolitan Statistical Subdivision 2009</b>	<b>Murder*</b>	<b>Assault - domestic violence related</b>	<b>Assault - non-domestic violence related</b>	<b>Sexual assault</b>	<b>Indecent assault, act of indecency and other sexual offences</b>	<b>Robbery without a weapon</b>	<b>Robbery with a firearm</b>	<b>Robbery with a weapon not a firearm</b>	<b>Break and enter dwelling</b>	<b>Break and enter non-dwelling</b>	<b>Motor vehicle theft</b>	<b>Steal from motor vehicle</b>	<b>Steal from retail store</b>	<b>Steal from dwelling</b>	<b>Steal from person</b>	<b>Fraud</b>	<b>Malicious damage to property</b>
Inner Sydney	7	1,369	4,737	272	371	842	84	282	2,433	1,379	1,506	6,203	2,601	1,346	3,946	5,569	6,146
Eastern Suburbs	2	540	1,142	77	164	149	21	60	1,652	384	723	1,551	697	751	580	1,882	2,635
St George-Sutherland	1	1,079	1,563	125	193	242	23	96	1,429	517	1,036	1,959	1,009	696	356	1,800	4,770
Canterbury-Bankstown	6	1,034	1,187	95	177	230	56	137	1,559	473	1,683	1,994	705	506	279	2,374	2,979
Fairfield-Liverpool	11	1,414	1,637	203	221	243	56	169	2,348	649	1,561	2,345	1,022	584	379	2,058	3,796
Outer South Western Sydney	3	1,409	1,621	192	224	178	22	71	1,824	512	1,007	1,408	602	821	207	981	4,837
Inner Western Sydney	4	374	630	57	123	152	29	77	1,017	258	620	1,291	490	361	277	1,438	1,537
Central Western Sydney	5	1,358	1,781	164	224	330	74	196	2,437	611	1,495	2,299	1,140	780	503	2,811	3,528
Outer Western Sydney	0	1,348	1,945	227	291	152	24	71	1,550	675	1,222	1,892	807	797	228	1,495	5,496
Blacktown	2	1,768	2,108	240	250	269	12	96	2,690	536	1,376	1,934	1,253	755	368	2,512	5,656
Lower Northern Sydney	3	401	791	106	138	85	16	45	1,350	575	422	1,206	1,044	491	281	1,822	2,297
Central Northern Sydney	7	556	816	103	196	82	9	49	1,921	630	452	1,613	691	709	169	1,383	3,336
Northern Beaches	0	401	833	67	141	69	5	15	767	350	328	1,449	519	584	241	877	2,674
Central Coast	1	1,298	1,775	254	257	94	8	38	1,598	846	961	2,414	1,034	1,012	286	834	5,158
Newcastle	5	2,164	3,299	406	414	201	5	103	3,619	2,430	2,424	4,632	1,689	2,158	481	2,018	9,826
Wollongong	1	910	1,594	192	185	99	8	47	1,372	592	865	1,484	1,079	792	257	886	4,351

\* Number of victims.

**TABLE 3.3A: TRENDS<sup>a</sup> IN RECORDED CRIMINAL INCIDENTS FOR MAJOR OFFENCES,  
NSW LGAs, JANUARY 2009 TO DECEMBER 2010**

NSW LGAs	Murder*	Assault - domestic violence related	Assault - non-domestic violence related	Sexual assault	Indecent assault, act of indecency and other sexual offences	Robbery without a weapon	Robbery with a firearm	Robbery with a weapon not a firearm	Break and enter dwelling	Break and enter non-dwelling	Motor vehicle theft	Steal from motor vehicle	Steal from retail store	Steal from dwelling	Steal from person	Fraud	Malicious damage to property
Albury	.	ns	ns	ns	ns	.	.	.	ns	ns	ns	ns	ns	ns	ns	ns	ns
Armidale Dumaresq	.	ns	ns	ns	ns	.	.	.	ns	-56.3	ns	ns	ns	ns	.	ns	ns
Ashfield	.	ns	ns	.	ns	ns	.	.	ns	ns	ns	ns	ns	ns	ns	ns	ns
Auburn	.	ns	ns	ns	ns	ns	.	ns	ns	ns	ns	-32.4	-30.8	ns	ns	ns	ns
Ballina	.	ns	-18.8	ns	ns	.	.	.	ns	ns	ns	ns	ns	ns	.	ns	-23.7
Bairnald	.	.	.	.	.	.	.	.	.	.	.	.	.	.	.	.	ns
Bankstown	.	ns	ns	ns	ns	ns	ns	ns	ns	ns	ns	-13.2	-28.0	ns	-31.2	ns	ns
Bathurst Regional	.	ns	ns	ns	ns	.	.	.	ns	ns	ns	ns	ns	ns	ns	ns	ns
Bega Valley	.	ns	ns	ns	.	.	.	.	ns	-44.7	ns	ns	ns	ns	.	ns	ns
Bellingen	.	.	ns	.	.	.	.	.	ns	ns	.	ns	.	ns	.	.	ns
Berrigan	.	.	.	.	.	.	.	.	ns	ns	.	.	.	ns	.	.	ns
Blacktown	.	ns	ns	ns	ns	ns	.	ns	-17.7	ns	-15.6	11.9	ns	14.6	ns	ns	ns
Bland	.	.	ns	.	.	.	.	.	.	ns	.	ns	.	ns	.	.	ns
Blayney	.	.	ns	.	.	.	.	.	.	ns	.	.	.	ns	.	.	-41.2
Blue Mountains	.	ns	ns	ns	ns	ns	.	.	ns	ns	ns	ns	ns	ns	ns	-19.3	ns
Bogan	.	ns	ns	.	.	.	.	.	.	.	.	.	.	.	.	.	ns
Bombala	.	.	.	.	.	.	.	.	.	.	.	.	.	.	.	.	ns
Boorowa	.	.	.	.	.	.	.	.	.	.	.	.	.	.	.	.	ns
Botany Bay	.	ns	ns	.	ns	ns	.	ns	ns	43.2	ns	ns	ns	ns	ns	ns	-10.8
Bourke	.	ns	ns	.	.	.	.	.	ns	ns	ns	ns	.	ns	.	.	ns
Brewarrina	.	ns	ns	.	.	.	.	ns	ns	.	ns	.	.	ns	.	.	ns
Broken Hill	.	ns	ns	ns	.	.	.	ns	ns	ns	ns	ns	ns	-37.1	.	35.7	ns
Burwood	.	26.5	ns	.	ns	-41.5	.	ns	ns	-27.9	ns	ns	ns	ns	ns	ns	ns
Byron	.	ns	ns	ns	ns	.	.	ns	ns	ns	ns	ns	ns	ns	ns	ns	ns
Cabonne	.	ns	ns	.	.	.	.	ns	ns	.	ns	.	.	ns	.	.	ns
Camden	.	ns	-25.9	ns	ns	.	.	ns	ns	ns	ns	ns	ns	ns	.	-35.6	-28.6
Campbelltown	.	-6.6	ns	ns	ns	ns	.	ns	ns	-10.3	ns	ns	ns	ns	ns	ns	-20.5
Canada Bay	.	ns	ns	.	.	.	.	-13.1	ns	ns	ns	ns	ns	ns	ns	ns	ns
Canterbury	.	ns	ns	ns	ns	ns	ns	ns	ns	-19.2	ns	ns	ns	ns	ns	21.4	ns
Carrathool	.	.	ns	.	.	.	.	.	.	.	.	.	.	.	.	.	-50.9
Central Darling	.	ns	ns	.	.	.	.	ns	.	.	.	.	.	.	.	.	ns
Cessnock	.	ns	17.6	ns	ns	.	.	ns	ns	-35.6	ns	ns	ns	ns	ns	ns	ns
Clarence Valley	.	ns	-32.2	ns	44.4	.	.	ns	ns	ns	ns	ns	ns	ns	ns	ns	-17.1
Cobar	.	ns	ns	.	.	.	.	.	.	.	.	.	.	.	.	.	ns
Coffs Harbour	.	ns	ns	ns	ns	.	.	ns	ns	ns	ns	ns	ns	ns	ns	ns	ns
Conargo	.	.	.	.	.	.	.	.	.	.	.	.	.	.	.	.	ns
Coolamon	.	.	.	.	.	.	.	.	ns	ns	.	.	.	.	.	.	ns
Cooma-Monaro	.	.	ns	.	.	.	.	ns	ns	.	ns	.	.	ns	.	.	ns
Coonamble	.	ns	ns	.	.	.	.	17.5	ns	.	ns	.	.	ns	.	.	ns
Cootamundra	.	ns	ns	.	.	.	.	ns	ns	.	ns	.	.	ns	.	.	ns
Corowa Shire	.	ns	ns	.	.	.	.	ns	ns	.	ns	.	.	ns	.	.	ns
Cowra	.	ns	ns	.	.	.	.	ns	-41.1	ns	ns	ns	ns	ns	.	ns	ns
Deniliquin	.	ns	ns	.	.	.	.	ns	ns	.	ns	.	.	ns	.	.	ns
Dubbo	.	ns	ns	ns	ns	.	.	ns	ns	ns	ns	ns	ns	ns	60.0	ns	ns
Dungog	.	.	.	.	.	.	.	ns	ns	.	ns	.	.	ns	.	.	ns
Eurobodalla	.	ns	-23.3	ns	ns	.	.	ns	ns	ns	ns	ns	ns	ns	.	ns	-19.7
Fairfield	.	ns	ns	ns	ns	ns	ns	-39.1	18.0	-18.4	-5.6	ns	ns	ns	ns	ns	ns
Forbes	.	ns	ns	.	.	.	.	ns	-52.9	ns	101.3	.	.	ns	.	ns	-27.0
Gilgandra	.	ns	ns	.	.	.	.	ns	ns	.	ns	.	.	ns	.	.	ns
Glen Innes Severn	.	ns	ns	.	.	.	.	63.9	ns	.	ns	.	.	ns	.	ns	ns
Gloucester	.	.	ns	.	.	.	.	.	.	.	.	.	.	.	.	.	ns
Gosford	.	ns	ns	ns	ns	ns	.	45.4	ns	ns	-18.9	ns	ns	ns	ns	ns	-15.2
Goulburn Mulwaree	.	ns	ns	ns	ns	.	.	ns	ns	ns	ns	27.0	ns	.	.	.	ns
Great Lakes	.	ns	ns	ns	ns	.	.	ns	-58.8	-24.4	-40.3	ns	71.9	.	.	.	ns
Greater Hume Shire	.	.	ns	.	.	.	.	ns	ns	.	ns	.	.	ns	.	.	ns
Greater Taree	.	ns	ns	ns	-43.8	.	.	ns	ns	-43.8	ns	75.2	ns	ns	ns	ns	ns
Griffith	.	ns	ns	ns	ns	.	.	33.3	ns	ns	64.7	ns	ns	.	-30.6	.	ns
Gundagai	.	.	.	.	.	.	.	.	.	.	.	.	.	.	.	.	ns
Gunnedah	.	ns	ns	.	.	.	.	ns	ns	ns	44.8	ns	ns	.	.	ns	24.9
Guyra	.	.	.	.	.	.	.	.	.	.	.	.	.	.	.	.	-43.4
Gwydir	.	.	.	.	.	.	.	.	.	.	.	.	.	ns	.	.	ns
Harden	.	.	.	.	.	.	.	.	.	.	.	.	.	.	.	.	44.0
Hawkesbury	.	ns	ns	ns	ns	.	.	-24.8	ns	ns	ns	ns	ns	ns	ns	ns	-27.7
Hay	.	.	.	.	.	.	.	.	.	.	.	.	.	.	.	.	ns
Holroyd	.	ns	ns	ns	ns	ns	ns	17.5	ns	ns	ns	ns	ns	ns	ns	ns	ns
Hornsby	.	ns	ns	ns	ns	-41.5	.	ns	-49.4	ns	ns	ns	ns	ns	ns	ns	-18.1
Hunters Hill	.	.	.	.	.	.	.	.	.	.	.	.	.	ns	.	.	ns
Hurstville	.	ns	ns	ns	ns	ns	ns	ns	ns	ns	ns	ns	ns	ns	ns	ns	ns
Inverell	.	ns	ns	.	.	.	.	ns	ns	.	ns	.	.	ns	.	.	-13.2
Jerilderie	.	.	.	.	.	.	.	.	.	.	.	.	.	.	.	.	ns
Junee	.	.	ns	.	.	.	.	ns	.	.	.	.	.	ns	.	.	ns
Kempsey	.	ns	ns	ns	ns	.	.	ns	-40.4	ns	ns	ns	ns	ns	.	ns	ns
Kiama	.	ns	ns	.	.	.	.	ns	ns	ns	ns	ns	ns	ns	.	.	ns
Kogarah	.	ns	ns	.	.	ns	.	ns	ns	ns	ns	ns	ns	ns	.	.	ns
Ku-ring-gai	.	ns	ns	ns	ns	.	.	-25.1	-52.1	ns	-23.8	57.1	-17.5	.	.	.	-12.5
Kyogle	.	ns	ns	.	.	.	.	ns	ns	ns	ns	.	.	ns	.	.	ns
Lachlan	.	ns	ns	.	.	.	.	166.7	138.1	.	.	.	.	ns	.	.	ns
Lake Macquarie	.	-13.6	ns	ns	ns	ns	.	-18.3	-15.7	ns	ns	ns	ns	ns	ns	ns	ns
Lane Cove	.	.	ns	.	.	.	.	ns	ns	ns	ns	.	.	ns	.	.	ns
Leeton	.	ns	ns	.	.	.	.	ns	ns	ns	ns	.	.	ns	.	.	ns

TABLE 3.3A: TRENDS<sup>^</sup> IN RECORDED CRIMINAL INCIDENTS FOR MAJOR OFFENCES, NSW LGAs, JANUARY 2009 TO DECEMBER 2010

NSW LGAs	Murder*	Assault - domestic violence related	Assault - non-domestic violence related	Sexual assault	Indecent assault, act of indecency and other sexual offences	Robbery without a weapon	Robbery with a firearm	Robbery with a weapon not a firearm	Break and enter dwelling	Break and enter non-dwelling	Motor vehicle theft	Steal from motor vehicle	Steal from retail store	Steal from dwelling	Steal from person	Fraud	Malicious damage to property
Leichhardt	ns	ns	ns	.	ns	.	.	.	ns	ns	ns	ns	ns	ns	-26.8	ns	ns
Lismore	-18.0	ns	ns	ns	ns	.	.	.	46.4	ns	ns	ns	ns	ns	ns	-20.4	-19.7
Lithgow	ns	ns	ns	.	.	.	.	.	ns	ns	ns	ns	ns	ns	ns	ns	ns
Liverpool	ns	ns	ns	ns	ns	ns	.	ns	ns	ns	-15.6	-20.6	ns	ns	-16.6	ns	ns
Liverpool Plains	ns	ns	ns	.	.	.	.	.	ns	175.0	.	.	.	ns	.	.	ns
Lockhart	.	.	.	.	.	.	.	.	.	.	.	.	.	.	.	.	ns
Lord Howe Island	.	.	.	.	.	.	.	.	.	.	.	.	.	.	.	.	ns
Maitland	ns	ns	ns	ns	ns	.	.	.	14.6	ns	ns	ns	29.1	ns	ns	ns	ns
Manly	ns	ns	ns	.	ns	.	.	.	ns	ns	ns	ns	ns	ns	ns	ns	ns
Marrickville	ns	ns	ns	ns	ns	.	.	ns	ns	-28.6	ns	ns	ns	ns	ns	ns	-15.7
Mid-Western Regional	ns	ns	ns	.	.	.	.	.	ns	-47.7	-56.3	ns	ns	ns	ns	ns	ns
Moree Plains	ns	-23.4	ns	.	.	.	.	.	ns	ns	ns	ns	ns	ns	ns	ns	-27.0
Mosman	ns	ns	.	.	.	.	.	.	-38.9	.	-40.0	ns	ns	ns	.	ns	ns
Murray	.	.	.	.	.	.	.	.	ns	.	.	ns	.	ns	.	.	-41.8
Murrumbidgee	.	.	.	.	.	.	.	.	.	.	.	.	.	.	.	.	ns
Muswellbrook	ns	ns	ns	.	.	.	.	.	ns	ns	ns	ns	ns	ns	.	ns	ns
Nambucca	ns	ns	ns	.	ns	.	.	.	ns	ns	ns	ns	ns	ns	.	ns	ns
Narrabri	ns	ns	ns	.	.	.	.	.	ns	ns	ns	ns	ns	ns	.	ns	ns
Narrandera	ns	ns	ns	.	.	.	.	.	-52.9	-57.1	.	ns	.	ns	.	ns	ns
Narromine	ns	ns	.	.	.	.	.	.	ns	ns	ns	76.5	.	ns	.	.	ns
Newcastle	ns	ns	ns	ns	-14.2	-18.7	.	ns	ns	-27.0	ns	ns	ns	ns	ns	22.1	ns
North Sydney	ns	ns	ns	.	ns	ns	.	.	ns	-51.0	-30.9	ns	ns	ns	ns	-42.3	-17.8
Oberon	.	.	.	.	.	.	.	.	ns	.	.	.	.	.	.	.	ns
Orange	ns	-16.6	ns	ns	ns	.	.	.	ns	ns	ns	ns	ns	ns	ns	ns	-19.0
Palerang	ns	ns	.	.	.	.	.	.	ns	ns	.	.	.	ns	.	.	-51.4
Parkes	ns	ns	.	.	.	.	.	.	ns	-22.7	ns	ns	ns	ns	.	ns	ns
Parramatta	ns	ns	ns	ns	ns	ns	ns	ns	ns	ns	ns	ns	-12.8	ns	ns	ns	ns
Penrith	ns	ns	ns	ns	ns	ns	ns	ns	ns	-21.7	-13.3	ns	ns	30.5	ns	ns	-9.2
Pittwater	ns	ns	ns	.	ns	.	.	.	ns	ns	ns	ns	ns	ns	ns	ns	-29.9
Port Macquarie-Hastings	ns	ns	ns	ns	ns	.	.	.	57.8	ns	ns	ns	45.5	ns	ns	ns	ns
Port Stephens	ns	ns	ns	ns	87.1	.	.	.	ns	-36.0	ns	ns	ns	ns	ns	ns	-11.0
Queanbeyan	ns	ns	ns	ns	ns	.	.	.	ns	ns	ns	ns	ns	ns	.	-27.5	-27.2
Randwick	ns	ns	ns	ns	ns	ns	ns	ns	ns	ns	ns	ns	ns	ns	ns	ns	-12.7
Richmond Valley	-34.5	ns	ns	ns	ns	.	.	.	75.2	ns	ns	ns	ns	ns	.	ns	ns
Rockdale	.	.	.	.	.	.	.	.	ns	ns	ns	ns	ns	ns	ns	ns	ns
Ryde	-30.0	-23.6	ns	ns	ns	ns	.	.	ns	ns	ns	ns	14.4	ns	-50.0	ns	ns
Shellharbour	ns	ns	ns	ns	ns	.	.	.	ns	ns	ns	ns	ns	ns	ns	ns	ns
Shoalhaven	ns	ns	ns	ns	ns	ns	.	.	ns	26.2	ns	ns	ns	ns	ns	ns	-12.8
Singleton	ns	ns	ns	.	.	.	.	.	ns	18.3	ns	ns	ns	ns	.	ns	ns
Snowy River	.	.	.	.	.	.	.	.	.	.	.	.	.	ns	.	.	ns
Strathfield	ns	ns	ns	.	ns	ns	ns	ns	ns	ns	ns	ns	ns	ns	ns	ns	ns
Sutherland Shire	ns	ns	ns	ns	ns	ns	.	.	ns	ns	ns	ns	-28.0	ns	ns	ns	ns
Sydney	ns	ns	ns	ns	ns	-25.8	ns	-19.8	-17.3	ns	-8.4	-36.0	ns	ns	ns	ns	-5.7
Tamworth Regional	ns	ns	ns	ns	ns	.	.	.	ns	ns	ns	ns	ns	ns	ns	ns	ns
Temora	.	.	.	.	.	.	.	.	ns	-34.9	.	.	.	ns	.	.	ns
Tenterfield	ns	ns	ns	.	.	.	.	.	ns	ns	.	.	.	ns	.	.	58.6
The Hills Shire	ns	ns	ns	ns	-37.9	ns	.	.	-27.9	ns	ns	-16.3	ns	ns	ns	ns	ns
Tumbarumba	.	.	.	.	.	.	.	.	.	.	.	.	.	.	.	.	ns
Tumut Shire	ns	ns	ns	.	.	.	.	.	.	.	.	.	.	108.7	.	.	ns
Tweed	ns	ns	ns	ns	ns	.	.	.	26.3	ns	ns	ns	ns	ns	ns	ns	-12.0
Unincorporated Far West	.	.	.	.	.	.	.	.	.	.	.	.	.	.	.	.	ns
Upper Hunter Shire	ns	ns	.	.	.	.	.	.	ns	44.4	.	ns	.	ns	.	ns	ns
Upper Lachlan Shire	.	.	.	.	.	.	.	.	ns	.	.	.	.	.	.	.	ns
Uralla	.	.	.	.	.	.	.	.	.	.	.	.	.	.	.	.	ns
Urana	.	.	.	.	.	.	.	.	.	.	.	.	.	.	.	.	ns
Wagga Wagga	ns	ns	ns	ns	ns	.	.	.	ns	ns	ns	ns	27.5	ns	-25.5	-27.3	-17.6
Wakool	.	.	.	.	.	.	.	.	.	.	.	.	.	.	.	.	-32.6
Walcha	.	.	.	.	.	.	.	.	.	.	.	.	.	.	.	.	ns
Walgett	ns	ns	.	.	.	.	.	.	ns	ns	.	ns	.	ns	.	ns	ns
Warren	ns	ns	.	.	.	.	.	.	ns	.	.	.	.	.	.	.	ns
Warringah	ns	10.5	ns	ns	ns	ns	.	.	ns	ns	ns	-26.2	ns	ns	-23.2	ns	ns
Warrumbungle Shire	ns	ns	.	.	.	.	.	.	ns	ns	.	ns	.	ns	.	.	ns
Waverley	ns	ns	.	.	ns	ns	.	.	ns	ns	ns	ns	ns	ns	-32.4	ns	ns
Weddin	.	.	.	.	.	.	.	.	.	.	.	.	.	.	.	.	ns
Wellington	ns	ns	.	.	.	.	.	.	36.8	ns	ns	64.3	ns	ns	.	.	ns
Wentworth	ns	-45.6	.	.	.	.	.	.	ns	ns	ns	ns	ns	ns	.	.	ns
Willoughby	ns	ns	.	.	ns	ns	.	.	ns	-32.3	ns	ns	ns	ns	ns	ns	ns
Wingecarribee	ns	ns	ns	ns	ns	.	.	.	ns	ns	-49.4	ns	ns	ns	.	ns	ns
Wollondilly	ns	ns	.	.	.	.	.	.	ns	ns	ns	ns	ns	ns	.	ns	ns
Wollongong	ns	-16.5	ns	ns	ns	ns	.	.	23.9	19.0	ns	ns	-29.4	ns	ns	ns	-15.5
Woollahra	ns	ns	.	.	72.7	.	.	.	-38.0	-60.0	ns	ns	ns	ns	ns	-18.7	ns
Wyong	ns	ns	ns	ns	ns	ns	.	.	ns	ns	ns	ns	ns	ns	ns	40.8	ns
Yass Valley	ns	ns	.	.	.	.	.	.	-51.2	ns	.	ns	.	ns	.	.	ns
Young	ns	ns	.	.	.	.	.	.	-35.3	ns	.	ns	.	ns	.	.	ns
NSW	ns	ns	ns	ns	ns	-6.9	ns	-11.0	ns	-11.4	-9.3	-4.8	ns	ns	-10.6	ns	-10.1

<sup>^</sup> For further explanation of trend results, see page 44, paragraphs 5 and 6.

\* There were no LGAs with 20 murder victims in 2009 and 2010, hence the only trend test reported above was for NSW. Any trend test for the offence of murder is for the number of victims, not incidents.

**TABLE 3.3B: RATIO TO NSW RATE\* OF RECORDED CRIMINAL INCIDENTS PER 100,000 POPULATION, MAJOR OFFENCES, NSW LGAs, 2010**

NSW LGAs	Murder*	Assault - domestic violence related	Assault - non-domestic violence related	Sexual assault	Indecent assault, act of indecency and other sexual offences	Robbery without a weapon	Robbery with a firearm	Robbery with a weapon not a firearm	Break and enter dwelling	Break and enter non-dwelling	Motor vehicle theft	Steal from motor vehicle	Steal from retail store	Steal from dwelling	Steal from person	Fraud	Malicious damage to property
Albury		1.2	1.5	1.8	1.2	0.7		0.9	2.0	2.7	1.3	2.1	1.5	2.0	0.9	0.7	1.9
Armidale Dumaresq		1.3	1.3	1.6	1.1	0.4		0.2	1.7	1.1	0.6	1.1	1.3	1.4	0.5	0.8	1.4
Ashfield		0.6	0.5	0.7	0.7	1.9	0.8	1.7	0.7	0.3	0.8	1.0	0.8	0.5	0.7	1.3	0.5
Auburn	1.3	1.1	0.9	0.7	0.8	2.7	3.2	4.3	1.0	0.8	1.8	1.1	0.5	0.6	1.3	1.6	0.7
Ballina	2.4	0.8	0.8	1.2	1.4	0.4		0.3	0.7	1.3	0.5	0.7	0.7	1.2	0.1	0.5	0.8
Bairanald																	
Bankstown	1.1	1.0	0.7	0.5	0.6	0.9	3.1	1.8	0.9	0.7	1.6	0.9	0.6	0.6	0.5	1.8	0.8
Bathurst Regional		1.4	1.4	1.6	0.9	0.6		0.1	1.3	1.3	0.9	1.5	0.9	1.4	0.7	0.8	1.4
Bega Valley		0.8	0.8	1.0	0.7	0.2		0.1	0.6	1.2	0.4	0.5	0.6	1.1	0.3	0.3	0.9
Bellingen		0.6	0.7	0.7	0.4	0.3		0.4	0.4	1.3	0.4	0.7	0.3	0.8		0.2	0.9
Berrigan		0.6	0.3	0.4	1.1	0.2			0.5	1.8	0.6	0.4		1.1	0.2	0.3	0.6
Blacktown	0.7	1.6	1.1	1.2	1.2	1.8	0.7	1.6	1.3	0.7	1.4	1.2	1.2	1.0	0.9	1.5	1.3
Bland		0.8	0.6	1.2	0.4	0.3			0.6	1.4	0.7	0.9	0.1	1.3		0.3	0.7
Blayney	14.0	0.5	0.7	1.5	0.4				0.5	1.3	0.3	0.6	0.2	1.2	0.1	0.3	0.8
Blue Mountains		0.9	0.8	1.0	1.1	0.5	0.2	0.5	0.6	0.7	0.5	0.8	0.5	0.9	0.4	0.4	1.3
Bogan		2.3	1.3	2.6	0.9				0.6	1.3	0.8	1.0	0.3	0.8	0.3	0.3	1.1
Bombala																	
Boorowa																	
Botany Bay		0.9	0.9	0.7	1.2	1.2	0.9	1.1	0.7	0.6	1.7	1.1	3.8	0.7	2.9	2.5	1.0
Bourke		10.2	5.5	5.7	5.8	0.7			3.2	4.8	2.6	2.1	2.4	5.0	0.8	0.8	4.0
Brewarrina																	
Broken Hill		2.3	1.6	1.8	0.6	0.6			2.1	1.4	0.6	0.9	0.9	1.9	0.4	0.6	1.7
Burwood		0.9	0.8	0.8	0.9	1.4	3.6	3.4	1.1	0.8	1.1	1.2	2.5	0.6	1.6	3.2	0.8
Byron		0.8	1.7	1.3	1.2	0.6	0.5		0.7	2.2	0.5	1.1	0.8	1.8	1.7	0.6	1.0
Cabonne		0.8	0.6	1.1	0.7			0.4	0.5	1.1	0.4	0.4	0.3	0.9	0.1	0.3	0.6
Camden		0.9	0.5	0.6	0.8	0.5	0.6	0.3	0.7	0.7	1.1	1.1	0.6	0.8	0.2	0.5	0.8
Campbelltown	2.0	1.9	1.4	1.6	1.2	1.7	0.9	2.3	1.5	0.9	1.6	1.0	1.3	1.2	0.8	0.8	1.5
Canada Bay		0.3	0.3	0.2	0.3	0.6	0.9	0.6	0.6	0.5	1.1	1.0	0.3	0.5	0.3	1.1	0.5
Canterbury	0.7	0.9	0.6	0.5	0.6	1.7	2.4	2.5	0.9	0.5	1.4	0.8	0.6	0.5	0.6	1.1	0.6
Carrathool																	
Central Darling																	
Cessnock		1.4	1.2	1.8	1.3	0.4	0.3	0.4	0.9	2.3	1.4	0.9	0.6	1.5	0.4	0.6	1.2
Clarence Valley	1.9	0.8	0.7	1.4	1.4	0.1	0.3	0.2	0.9	1.5	0.8	0.9	0.9	1.5	0.3	0.4	0.9
Cobar		1.5	1.8	5.8	1.9	0.4			1.0	1.6	0.5	0.7	0.7	1.9		0.5	1.7
Coffs Harbour		1.3	1.2	1.3	1.3	0.5	0.2	0.5	1.0	1.6	1.1	1.5	1.1	1.3	0.7	0.4	1.2
Conargo																	
Coolamon		0.5	0.6	1.1	2.3	0.5			0.8	2.7	1.1	0.3	0.1	1.4		0.1	0.7
Cooma-Monaro		0.5	1.0	0.8	1.3			1.4	0.5	1.0	0.4	0.6	0.9	1.1	0.5	0.3	1.3
Coonamble		2.9	2.3	2.6	2.9	0.5			4.6	5.0	1.1	1.9	1.5	3.1	0.4	0.4	2.8
Cootamundra		1.6	1.1	2.3	1.4				0.8	1.8	0.2	0.4	0.7	1.9	0.5	0.3	0.8
Corowa Shire		0.9	0.5	0.5	0.4	0.2			0.5	1.3	0.2	0.5	0.3	1.7	0.1	0.1	0.9
Cowra		1.9	1.8	2.0	1.8	0.3		0.4	1.5	2.0	0.7	1.6	0.7	2.0	0.2	0.4	2.0
Deniliquin		1.9	1.1	0.6	1.4				1.4	1.1	0.4	0.6	0.5	2.3		0.5	1.8
Dubbo		2.1	1.7	1.6	2.0	0.9	0.4	0.5	1.9	1.1	1.2	1.7	1.6	1.7	0.6	0.7	1.7
Dungog		0.3	0.4	1.1	0.9				0.5	1.5	0.7	0.6	0.2	0.8	0.4	0.2	0.7
Eurobodalla		1.0	1.0	1.3	0.9	0.3		0.4	0.9	1.1	0.6	1.3	1.4	0.9	0.4	0.4	1.0
Fairfield	1.0	1.0	0.7	0.7	0.9	1.3	2.4	1.3	1.1	0.6	1.3	0.8	0.6	0.5	0.7	1.0	0.6
Forbes		2.3	1.7	0.5	1.0			1.0	1.2	1.8	0.7	2.5	0.4	2.7		1.5	2.1
Gilgandra		1.9	2.1	1.4	0.9	0.9		1.0	2.0	1.8	0.5	0.9	0.4	1.7	0.3	0.4	1.4
Glen Innes Severn	10.9	1.1	1.0	1.0	1.9				1.1	3.0	0.6	1.2	0.5	1.9	0.2	1.2	1.4
Gloucester		1.0	0.9	1.2	1.6	0.4			0.8	0.6	0.2	0.2		0.3	0.3	0.3	0.7
Gosford		1.2	0.8	0.8	1.2	0.9	0.4		1.1	1.3	0.9	1.0	1.3	0.9	1.0	0.6	1.0
Goulburn Mulwaree	3.5	1.3	1.3	1.5	1.2	0.2		0.5	0.6	1.2	0.6	0.7	1.0	1.6	0.3	0.9	1.6
Great Lakes		1.6	1.0	1.4	1.2	0.3		0.1	0.9	0.9	0.6	0.5	0.7	1.9	0.3	1.0	1.1
Greater Hume Shire		0.4	0.5	0.3	0.4				0.4	1.9	0.2	0.5	0.2	1.3		0.3	0.5
Greater Taree	2.1	1.3	1.1	1.6	1.3	0.3	0.7	0.7	2.4	2.3	1.1	0.8	1.5	1.5	0.6	0.6	1.2
Griffith	7.8	1.5	1.7	1.2	2.3	0.6		0.7	2.0	1.1	1.4	1.4	1.3	1.3	0.4	0.5	1.6
Gundagai		1.3	0.7		0.4				0.3	0.8	0.4	0.3	0.1	0.7		2.2	0.5
Gunnedah		1.6	1.5	1.7	1.6	0.7			1.4	1.8	0.9	1.8	0.9	2.0	0.3	0.4	1.8
Guyra		1.2	0.7	1.1	1.8				0.7	1.0	0.4	0.4		1.5	0.7	0.7	0.7
Gwydir		0.5	0.5	1.5	0.8		3.2		0.3	0.8	0.3	0.3	0.3	1.6		0.1	0.4
Harden		0.8	0.7	0.9	1.1			1.3	0.5	0.6	0.2	0.4	0.2	0.8	0.2	0.4	0.8
Hawkesbury		1.0	1.0	1.0	1.0	0.8	1.1	0.8	0.6	0.8	1.1	1.1	0.7	0.8	0.3	0.7	0.9
Hay		0.8	1.0	0.9					0.4	0.9	0.3	0.2	0.4	1.0		0.7	0.6
Holroyd	3.0	1.2	0.8	0.8	1.0	1.6	1.2	1.9	1.6	0.5	1.4	0.8	0.4	0.8	0.5	1.3	0.8
Hornsby		0.3	0.4	0.4	0.6	0.3	0.2	0.3	0.4	0.3	0.3	0.4	0.6	0.4	0.3	0.5	0.5
Hunters Hill		0.3	0.2	0.4	0.4	0.4		0.3	0.4	0.2	0.4	0.6	0.1	0.5	0.2	0.4	0.5
Hurstville	1.3	0.8	0.8	0.6	0.9	2.1	1.7	1.2	0.8	0.7	1.2	0.9	1.7	0.6	1.0	1.2	0.9
Inverell		2.1	1.8	1.7	0.8	0.1	1.0		0.7	1.0	0.3	1.0	1.4	1.9	0.1	0.5	1.4
Jerilderie																	
Junee		0.8	0.9	0.8	0.2				0.6	1.2	0.4	0.3	0.1	1.5	0.1	0.2	0.8
Kempsey	3.4	1.9	1.4	1.8	1.6	0.6	1.8	0.8	2.3	1.6	1.8	1.0	0.8	2.2	0.5	0.6	1.6
Kiama		0.3	0.5	0.8	1.1	0.1			0.8	0.9	0.4	0.8	0.4	0.6	0.5	0.3	0.6
Kogarah		0.5	0.3	0.2	0.2	0.7	0.6	0.7	0.4	0.3	0.6	0.5	0.1	0.4	0.2	0.5	0.6
Ku-ring-gai		0.2	0.2	0.5	0.5	0.0	0.5	0.1	0.8	0.3	0.2	0.5	0.2	0.6	0.1	0.5	0.5
Kyogle		1.7	1.5	1.5	1.4	0.4			0.8	1.9	0.9	0.5	0.2	1.5	0.2	0.3	1.3
Lachlan		2.0	1.6	0.5	1.4				2.2	6.1	1.0	1.1	0.5	1.9	0.1	0.5	1.5
Lake Macquarie	1.0	0.9	0.8	1.1	0.9	0.3	0.5	0.4	0.7	1.5	1.3	0.9	0.9	1.0	0.4	0.8	1.1
Lane Cove		0.1	0.2	0.4	0.3	0.1	0.5	0.3	0.6	0.4	0.4	0.7	0.2	0.4	0.2	0.5	0.3
Leeton		1.2	1.2	1.9	1.4			0.4	1.3	2.7	0.8	0.9	0.4	1.6	0.3	0.1	1.4

**TABLE 3.3B: RATIO TO NSW RATE\* OF RECORDED CRIMINAL INCIDENTS PER 100,000 POPULATION, MAJOR OFFENCES, NSW LGAs, 2010**

NSW LGAs	Murder*	Assault - domestic violence related	Assault - non-domestic violence related	Sexual assault	Indecent assault, act of indecency and other sexual offences	Robbery without a weapon	Robbery with a firearm	Robbery with a weapon not a firearm	Break and enter dwelling	Break and enter non-dwelling	Motor vehicle theft	Steal from motor vehicle	Steal from retail store	Steal from dwelling	Steal from person	Fraud	Malicious damage to property
Leichhardt	1.8	0.6	0.8	0.4	0.6	0.6	4.5	1.0	0.9	0.6	1.3	1.5	0.8	1.0	0.8	1.2	1.0
Lismore	.	1.2	1.5	1.7	1.6	0.8	0.8	0.3	1.0	1.2	0.8	0.9	1.5	1.3	0.7	0.5	1.0
Lithgow	.	1.1	1.5	1.1	0.8	0.6	0.8	0.2	1.0	1.2	1.0	0.8	0.7	1.7	0.5	0.6	1.7
Liverpool	2.8	1.2	0.9	1.0	1.0	1.6	1.7	2.0	1.1	0.6	1.3	0.9	1.3	0.6	0.8	1.0	0.9
Liverpool Plains	12.7	1.2	1.3	0.6	0.7	0.3	2.2	.	0.6	2.9	0.2	0.2	0.4	1.2	.	0.3	0.7
Lockhart	.	0.2	0.2	1.4	0.4	.	.	.	0.6	0.8	0.1	0.1	0.2	0.5	.	0.2	0.7
Lord Howe Island	.	.	.	.	.	.	.	.	.	.	.	.	.	.	.	.	.
Maitland	.	1.1	1.2	1.2	1.1	0.5	1.0	0.6	1.0	1.5	1.1	1.5	1.3	1.5	0.6	0.8	1.4
Manly	.	0.5	1.1	0.7	0.7	1.0	0.4	0.2	0.6	0.5	0.4	0.9	1.0	1.1	1.8	0.8	1.0
Marrickville	2.6	0.8	0.7	0.7	0.8	1.6	5.1	1.8	0.9	0.6	1.3	1.6	0.7	1.0	1.0	1.2	0.8
Mid-Western Regional	8.9	1.4	1.4	1.8	1.1	0.6	.	0.4	0.9	1.2	0.5	0.7	1.0	1.6	0.2	0.4	1.4
Moree Plains	.	3.4	2.5	3.2	3.1	2.0	.	1.3	3.8	5.4	2.1	1.9	1.7	2.2	0.7	0.8	2.3
Mosman	.	0.3	0.3	0.3	0.8	0.3	1.2	0.2	0.5	0.4	0.3	0.7	0.4	0.7	0.4	0.4	0.6
Murray	.	0.3	0.4	1.3	0.8	.	.	.	0.7	1.2	0.3	0.6	0.1	1.3	0.2	0.2	0.5
Murrumbidgee	.	.	.	.	.	.	.	.	.	.	.	.	.	.	.	.	.
Muswellbrook	.	1.3	1.2	1.6	1.8	0.9	.	0.3	1.6	3.5	1.0	1.0	0.9	1.5	0.6	0.4	1.9
Nambucca	.	1.4	1.5	4.1	1.7	0.6	.	0.5	1.0	2.1	1.0	0.9	0.3	1.6	0.3	0.4	1.2
Narrabri	7.3	1.4	1.3	1.7	1.0	0.3	.	.	1.2	1.6	0.8	1.0	0.7	1.6	0.1	0.5	1.3
Narrandera	.	1.5	1.5	1.8	1.7	0.3	.	.	1.1	1.8	0.4	1.2	0.7	1.7	0.3	0.7	1.8
Narromine	.	1.8	1.6	1.6	3.0	.	.	0.7	2.4	3.1	1.4	2.1	0.8	2.2	0.6	0.4	1.7
Newcastle	1.3	1.0	1.7	1.1	1.1	1.4	1.8	1.2	1.4	1.5	1.7	1.9	1.5	1.4	1.5	1.3	1.6
North Sydney	3.1	0.5	0.7	0.2	0.6	0.6	1.1	0.8	0.9	0.8	0.4	0.8	0.7	0.7	1.1	1.1	0.6
Oberon	.	0.7	0.7	1.8	1.0	.	.	.	0.7	0.7	0.5	0.4	0.5	0.6	.	0.9	1.0
Orange	.	1.5	1.6	2.3	1.2	0.8	0.4	1.1	2.1	1.6	1.4	2.0	2.5	1.7	0.7	0.7	1.8
Palerang	.	0.6	0.3	1.3	0.6	.	.	.	0.5	0.8	0.7	0.2	.	0.7	.	0.2	0.4
Parkes	.	1.7	1.4	1.6	1.6	0.4	.	0.3	1.2	1.4	0.6	1.2	0.7	2.0	0.1	0.6	1.8
Parramatta	.	1.0	1.0	0.9	1.2	2.0	3.3	2.3	1.2	0.6	1.3	1.0	1.5	0.8	1.4	1.9	0.8
Penrith	1.6	1.4	1.2	1.4	1.2	1.1	0.7	1.2	1.0	0.6	1.5	1.2	1.1	1.0	0.8	1.1	1.2
Pittwater	.	0.4	0.6	0.5	0.5	0.3	.	0.2	0.4	0.6	0.4	0.8	0.5	0.6	0.5	0.4	0.7
Port Macquarie-Hastings	1.3	1.2	1.2	1.1	0.9	0.5	0.2	0.6	1.1	1.3	0.7	1.0	1.0	1.6	0.5	0.6	1.0
Port Stephens	3.0	0.9	0.9	1.3	1.2	0.2	0.5	0.3	1.5	1.2	1.1	1.2	0.7	1.4	0.3	0.6	1.1
Queanbeyan	.	0.9	0.7	0.9	1.0	0.4	0.4	0.1	1.1	0.9	0.9	1.4	0.8	0.8	0.3	0.6	0.8
Randwick	0.8	0.6	0.8	0.5	0.6	1.4	0.5	0.8	1.0	0.3	1.0	0.9	0.5	0.7	0.9	1.0	0.7
Richmond Valley	.	1.3	1.4	1.9	1.5	0.1	0.8	0.6	2.0	2.2	1.1	1.0	0.5	1.4	0.2	0.6	1.3
Rockdale	.	0.7	0.6	0.3	0.7	1.6	0.9	1.9	0.6	0.5	1.0	0.8	0.4	0.4	0.6	1.2	0.7
Ryde	.	0.3	0.3	0.5	0.7	0.7	0.8	0.4	0.5	0.4	0.5	0.7	1.2	0.5	0.3	1.0	0.5
Shellharbour	1.5	0.9	0.8	1.0	0.8	0.4	.	0.4	0.9	1.0	1.1	1.1	0.8	0.8	0.4	0.6	1.0
Shoalhaven	.	1.5	1.1	1.2	1.3	0.6	0.5	0.5	1.5	1.7	1.0	1.0	1.0	1.3	0.5	0.4	1.2
Singleton	.	0.7	0.8	0.9	1.0	0.3	0.7	0.2	1.0	2.3	1.6	0.8	0.4	1.7	0.3	0.4	1.1
Snowy River	.	0.6	0.7	1.4	0.8	0.3	.	.	0.3	0.7	.	0.6	0.2	1.0	0.8	1.0	0.9
Strathfield	.	0.9	1.0	0.8	1.0	4.3	4.8	4.1	1.8	0.7	1.7	1.5	0.7	0.7	2.2	2.5	0.7
Sutherland Shire	.	0.6	0.7	0.5	0.6	0.4	0.5	0.6	0.5	0.4	0.6	0.7	0.5	0.6	0.5	0.7	0.9
Sydney	3.4	1.5	4.2	1.7	2.6	6.3	3.1	4.7	1.3	2.2	1.4	2.5	3.9	2.2	14.3	5.1	1.6
Tamworth Regional	1.7	1.7	1.6	1.6	1.9	0.8	.	0.5	1.8	1.9	1.0	0.8	1.1	1.5	0.4	0.5	1.5
Temora	.	0.9	0.9	2.1	1.3	.	.	1.6	0.8	1.9	0.2	0.7	0.2	2.1	.	0.3	1.1
Tenterfield	.	1.0	1.2	0.7	0.8	.	.	0.7	2.5	3.2	0.8	1.0	0.6	1.9	.	0.3	1.2
The Hills Shire	.	0.5	0.3	0.5	0.3	0.4	0.9	0.4	0.5	0.3	0.5	0.8	0.5	0.3	0.7	0.5	0.5
Tumbarumba	.	0.6	0.5	.	1.1	.	.	.	0.7	1.3	0.5	0.9	0.1	1.5	.	0.2	0.7
Tumut Shire	.	0.9	1.2	0.8	1.9	0.2	.	.	0.6	0.7	0.2	0.6	0.5	1.4	0.1	0.3	1.3
Tweed	2.3	0.8	0.7	1.0	0.9	0.4	1.0	0.5	1.0	1.4	0.9	1.3	1.0	1.1	0.4	0.5	0.9
Unincorporated Far West	.	.	.	.	.	.	.	.	.	.	.	.	.	.	.	.	.
Upper Hunter Shire	.	0.7	0.7	1.1	1.1	.	.	.	0.6	2.3	0.8	0.6	0.2	0.9	.	0.3	0.9
Upper Lachlan Shire	.	0.3	0.3	0.2	1.1	.	.	.	0.4	1.1	0.1	0.3	0.0	0.8	0.1	0.3	0.9
Uralla	.	0.6	0.5	0.3	2.4	.	.	.	0.4	1.6	0.3	0.2	0.1	0.7	0.1	0.3	0.5
Urana	.	.	.	.	.	.	.	.	.	.	.	.	.	.	.	.	.
Wagga Wagga	.	1.0	1.3	1.4	1.3	0.3	.	0.6	1.4	1.8	1.1	1.6	1.4	2.4	0.5	0.5	1.4
Wakool	.	0.6	0.7	1.1	1.2	.	.	.	0.3	1.3	0.4	0.2	0.1	0.5	.	0.0	0.5
Walcha	.	0.6	0.6	1.9	0.4	.	.	.	0.6	1.7	0.3	0.5	0.2	1.0	.	0.2	0.8
Walgett	.	8.1	3.4	2.2	1.5	.	.	.	3.1	4.8	1.3	1.8	0.9	2.9	0.7	0.7	2.5
Warren	.	.	.	.	.	.	.	.	.	.	.	.	.	.	.	.	.
Warringham	0.7	0.5	0.5	0.4	0.6	0.7	0.2	0.3	0.5	0.4	0.5	0.6	0.8	0.7	0.5	0.7	0.6
Warrumbungle Shire	.	1.3	1.3	1.8	1.5	0.2	.	.	0.9	1.8	0.3	0.6	0.6	1.3	0.1	0.3	1.2
Waverley	1.5	0.5	1.1	0.6	0.8	0.7	0.3	0.4	0.9	0.4	1.1	0.8	2.0	1.0	2.4	1.9	0.8
Weddin	.	0.5	0.5	1.3	1.1	.	.	.	0.6	0.8	0.4	0.2	.	0.6	0.2	0.3	0.7
Wellington	.	2.2	1.9	2.1	2.0	.	.	0.5	3.3	2.1	1.4	1.6	1.3	2.5	0.7	0.5	3.2
Wentworth	14.1	2.8	0.9	2.0	2.3	0.3	.	1.3	2.2	5.2	2.0	1.9	0.8	2.0	1.4	0.4	1.8
Willoughby	1.5	0.2	0.4	0.2	0.6	0.6	1.5	0.3	0.8	0.5	0.4	0.6	2.4	0.5	0.9	1.3	0.4
Wingecarribee	4.3	0.6	0.7	0.9	0.6	0.3	.	.	0.5	1.4	0.3	0.5	0.4	0.9	0.2	0.5	1.2
Wollondilly	.	1.0	0.5	0.7	0.6	0.5	0.8	.	0.5	0.6	0.7	0.4	0.1	0.7	0.1	0.8	0.8
Wollongong	.	0.8	0.9	1.1	1.2	0.8	0.5	0.9	1.0	1.0	1.0	0.8	1.1	0.9	0.8	0.6	1.0
Woollahra	.	0.5	0.6	0.4	0.9	0.7	0.6	0.4	0.9	0.3	0.8	1.1	0.7	1.2	1.3	1.2	0.7
Wyong	2.0	1.3	1.2	1.9	1.4	0.7	0.3	0.4	0.9	1.5	1.3	1.3	1.1	1.1	0.7	0.8	1.4
Yass Valley	.	0.5	0.5	1.1	0.9	.	.	.	0.2	0.8	0.3	0.2	0.6	0.8	0.1	0.6	0.6
Young	.	1.4	1.4	3.2	1.5	.	.	.	0.6	1.6	0.6	0.8	0.9	1.7	0.3	0.7	2.0
NSW	1.0	1.0	1.0	1.0	1.0	1.0	1.0	1.0	1.0	1.0	1.0	1.0	1.0	1.0	1.0	1.0	1.0

\* For further explanation of rate calculation populations and the ratio to NSW rate, see page 44, Note 3 and paragraph 8. A result of '.' indicates either that there were no relevant offences recorded in the LGA, or that the population is less than 3,000 people and no rate was calculated.

Sydney LGA can be considered a special case since the population used to calculate the rate is much lower than the population using the area for work and entertainment and this will be reflected in higher incident rates.

\* The ratios given on the offence of murder are calculated for the number of victims, not incidents, and must be treated with caution since for LGAs with relatively small populations a single murder victim will result in relatively high ratio to state.

TABLE 3.3C: NUMBER OF RECORDED CRIMINAL INCIDENTS FOR MAJOR OFFENCES, NSW LGAs, 2010

NSW LGAs 2010	Murder*	Assault - domestic violence related	Assault - non-domestic violence related	Sexual assault	Indecent assault, act of indecency and other sexual offences	Robbery without a weapon	Robbery with a firearm	Robbery with a weapon not a firearm	Break and enter dwelling	Break and enter non-dwelling	Motor vehicle theft	Steal from motor vehicle	Steal from retail store	Steal from dwelling	Steal from person	Fraud	Malicious damage to property
Albury	0	215	416	56	46	17	0	10	578	326	181	651	223	297	56	172	1,250
Armidale Dumaresq	0	123	191	26	20	5	0	1	253	70	41	175	95	103	15	99	460
Ashfield	0	92	124	20	21	40	2	15	167	35	97	262	97	68	35	277	298
Auburn	1	302	385	36	43	102	14	68	441	155	392	515	108	126	125	628	642
Ballina	1	127	186	33	43	9	0	3	174	127	58	190	88	144	4	117	450
Balranald	0	19	15	4	4	0	0	0	14	22	3	7	3	15	0	8	27
Bankstown	2	658	755	62	78	86	33	70	927	305	854	1,002	324	304	106	1,653	1,888
Bathurst Regional	0	194	315	39	26	11	0	1	294	121	96	378	103	165	35	156	691
Bega Valley	0	102	153	21	16	3	0	1	124	99	35	109	61	109	14	47	390
Bellingen	0	31	49	6	4	2	0	1	30	41	17	62	12	33	0	14	148
Berrigan	0	19	15	2	7	1	0	0	25	36	14	23	0	28	2	15	71
Blacktown	2	1,737	1,851	228	267	271	12	103	2,214	475	1,162	2,165	1,060	865	344	2,226	4,978
Bland	0	18	23	5	2	1	0	0	22	21	12	38	2	25	0	10	54
Blayney	1	13	27	7	2	0	0	0	19	23	7	27	5	26	1	10	70
Blue Mountains	0	259	323	51	62	21	1	8	259	133	111	401	107	196	36	163	1,336
Bogan	0	25	22	5	2	0	0	0	10	9	7	19	3	7	1	5	41
Bombala	0	16	12	3	3	0	0	0	6	10	1	12	0	8	0	3	33
Boorowa	0	8	3	0	1	0	0	0	7	4	4	6	1	4	0	4	9
Botany Bay	0	127	200	17	34	24	2	9	157	61	189	274	427	84	144	493	496
Bourke	0	114	93	11	13	1	0	0	56	35	23	40	21	45	3	13	158
Brewarrina	0	58	42	9	4	0	0	0	60	30	9	42	2	22	0	4	79
Broken Hill	0	166	174	22	9	6	0	0	238	65	35	111	49	110	9	57	439
Burwood	0	105	148	18	21	24	7	24	219	62	106	248	236	58	68	534	361
Byron	0	99	302	26	28	9	1	0	124	168	44	213	73	172	68	99	426
Cabonne	0	37	42	9	7	0	0	1	41	35	14	36	10	34	2	19	101
Camden	0	180	166	22	32	13	2	3	236	94	179	370	87	128	16	152	566
Campbelltown	3	1,042	1,183	149	137	126	8	73	1,349	319	681	938	562	531	155	615	2,862
Canada Bay	0	95	146	11	18	22	4	10	273	82	234	496	62	113	31	413	488
Canterbury	1	461	468	49	64	121	20	74	763	154	579	725	225	204	104	807	1,112
Carrathool	0	22	33	1	3	0	0	0	8	10	3	18	5	14	0	8	28
Central Darling	0	109	36	5	5	0	0	0	31	12	9	17	3	14	1	7	62
Cessnock	0	257	327	59	47	11	1	4	259	275	206	278	91	221	23	160	800
Clarence Valley	1	159	215	45	52	3	1	2	274	182	118	306	134	229	21	109	632
Cobar	0	29	52	19	7	1	0	0	31	20	8	22	10	28	0	14	113
Coffs Harbour	0	332	457	59	66	17	1	7	409	278	228	684	224	274	61	154	1,120
Conargo	0	1	2	0	0	0	0	0	0	2	1	2	0	1	0	2	1
Coolamon	0	8	15	3	7	1	0	0	19	27	13	7	1	17	0	2	37
Cooma-Monaro	0	19	56	5	10	0	0	3	30	24	12	40	27	33	6	18	169
Coonamble	0	45	54	7	9	1	0	0	114	51	13	52	18	39	2	9	152
Cootamundra	0	45	45	11	8	0	0	0	34	33	5	21	16	43	5	12	83
Corowa Shire	0	37	34	4	3	1	0	0	35	37	5	38	11	59	2	6	139
Cowra	0	91	132	16	17	2	0	1	111	63	24	132	27	74	3	24	325
Deniliquin	0	53	47	3	8	0	0	0	62	21	8	27	12	51	0	19	182
Dubbo	0	318	390	41	59	18	1	4	454	106	146	450	193	199	32	147	897
Dungog	0	11	21	6	6	0	0	0	26	32	16	31	4	21	4	8	75
Eurobodalla	0	131	207	30	25	6	0	3	195	102	65	311	151	98	19	70	474
Fairfield	2	735	737	85	134	125	27	53	1,265	257	719	972	325	283	172	1,010	1,549
Forbes	0	83	91	3	7	0	0	2	69	41	20	155	10	77	0	72	268
Gilgandra	0	32	54	4	3	2	0	1	53	20	6	27	6	23	2	10	84
Glen Innes Severn	1	38	50	6	13	0	0	0	59	67	17	67	12	51	2	58	162
Gloucester	0	18	26	4	6	1	0	0	25	7	3	6	0	5	2	8	46
Gosford	2	513	765	121	105	35	0	18	1,099	516	448	1,051	597	457	203	537	2,103
Goulburn Mulwaree	1	132	204	27	25	3	0	3	104	81	48	121	80	131	11	134	569
Great Lakes	0	210	203	31	32	6	0	1	180	73	65	111	75	196	11	178	489
Greater Hume Shire	0	17	27	2	3	0	0	0	27	48	6	32	6	38	0	18	68
Greater Taree	1	237	287	48	45	7	2	7	665	267	153	247	205	217	37	147	719
Griffith	2	144	237	20	43	8	0	4	292	70	105	219	99	94	14	59	521
Gundagai	0	19	15	0	1	0	0	0	6	7	4	7	1	8	0	43	26
Gunnedah	0	70	101	13	14	4	0	0	98	51	32	139	30	72	4	25	286
Guyra	0	19	18	3	6	0	0	0	17	11	5	11	0	20	4	15	43
Gwydir	0	9	15	5	3	0	1	0	9	10	5	10	5	25	0	4	30
Harden	0	11	15	2	3	0	0	1	10	5	2	9	2	8	1	8	36
Hawkesbury	0	241	362	41	46	26	4	11	221	127	202	434	131	155	23	229	766
Hay	0	10	18	2	0	0	0	0	7	7	3	5	4	10	0	12	28
Holroyd	3	452	437	51	71	81	7	39	948	118	397	523	128	237	67	634	998
Hornsby	0	195	324	42	68	24	2	9	371	121	125	450	296	196	62	428	995
Hunters Hill	0	15	18	4	4	3	0	1	36	7	18	51	5	22	3	28	95
Hurstville	1	239	335	30	51	81	8	20	374	130	266	462	394	148	99	488	867
Inverell	0	127	168	18	10	1	1	0	69	39	14	106	67	93	2	38	297
Jerilderie	0	2	1	3	0	0	0	0	5	3	1	5	0	2	0	5	11
Junee	0	19	31	3	1	0	0	0	23	18	7	12	2	27	1	6	66
Kempsey	1	205	233	34	34	8	3	5	384	115	146	188	65	190	19	84	612
Kiama	0	22	60	10	16	1	0	0	93	43	24	109	23	34	14	29	149
Kogarah	0	105	86	7	9	21	2	8	134	35	102	197	17	68	15	150	417
Ku-ring-gai	0	77	109	36	38	2	3	2	536	79	60	346	66	188	19	273	649
Kyogle	0	61	83	9	10	2	0	0	48	44	24	30	7	43	2	15	167
Lachlan	0	51	60	2	7	0	0	0	88	100	19	46	9	39	1	18	136
Lake Macquarie	2	639	865	136	128	30	6	17	785	716	719	1,153	516	602	90	828	2,744
Lane Cove	0	17	34	8	7	2	1	2	112	33	39	140	14	42	8	89	142
Leeton	0	53	80	14	12	0	0	1	92	78	28	64	14	56	5	8	207

TABLE 3.3C: NUMBER OF RECORDED CRIMINAL INCIDENTS FOR MAJOR OFFENCES, NSW LGAs, 2010

NSW LGAs 2010	Murder*	Assault - domestic violence related	Assault - non-domestic violence related	Sexual assault	Indecent assault, act of indecency and other sexual offences	Robbery without a weapon	Robbery with a firearm	Robbery with a weapon not a firearm	Break and enter dwelling	Break and enter non-dwelling	Motor vehicle theft	Steal from motor vehicle	Steal from retail store	Steal from dwelling	Steal from person	Fraud	Malicious damage to property
Leichhardt	1	118	227	13	24	15	14	11	277	79	203	523	120	159	52	327	665
Lismore	0	205	381	48	53	19	2	3	268	134	105	250	201	173	37	117	603
Lithgow	0	86	174	15	12	6	1	1	127	60	60	110	43	107	12	63	463
Liverpool	5	792	895	114	132	139	18	76	1,174	277	674	1,014	688	321	171	905	2,143
Liverpool Plains	1	36	59	3	4	1	1	0	27	55	5	11	8	27	0	11	73
Lockhart	0	3	4	3	1	0	0	0	12	6	1	2	2	5	0	4	30
Lord Howe Island	0	0	2	0	0	0	0	0	0	0	0	0	0	0	0	0	2
Maitland	0	283	443	51	57	17	4	9	407	254	214	668	253	308	49	290	1,248
Manly	0	70	259	18	20	20	1	2	132	51	45	234	122	130	93	164	513
Marrickville	2	236	308	36	47	62	23	30	404	115	288	765	167	239	98	472	811
Mid-Western Regional	2	118	180	25	19	7	0	2	113	67	31	93	62	106	5	48	399
Moree Plains	0	179	203	29	33	14	0	4	313	186	86	171	71	94	13	59	421
Mosman	0	35	43	5	16	4	2	1	91	26	21	121	34	59	15	52	203
Murray	0	9	16	6	4	0	0	0	29	20	7	27	3	28	2	9	46
Murrumbidgee	0	15	15	3	2	0	0	0	6	12	4	10	0	12	0	7	36
Muswellbrook	0	78	112	17	22	7	0	1	151	138	47	100	40	70	13	34	391
Nambucca	0	99	163	49	24	6	0	2	106	98	54	111	18	91	6	41	283
Narrabri	1	70	96	15	10	2	0	0	98	51	32	83	26	66	1	36	231
Narrandera	0	34	51	7	8	1	0	0	40	27	8	49	13	31	2	22	148
Narramine	0	44	59	7	15	0	0	1	93	51	28	90	15	44	5	12	152
Newcastle	2	572	1,431	107	121	109	16	40	1,260	562	754	1,873	682	642	293	989	3,186
North Sydney	2	107	257	10	26	20	4	10	326	126	76	311	130	127	90	338	505
Oberon	0	14	22	6	4	0	0	0	23	9	8	13	7	10	0	23	66
Orange	0	218	337	55	34	16	1	9	477	147	150	476	274	195	34	138	879
Palerang	0	30	22	12	6	0	0	0	44	27	28	18	0	29	0	17	67
Parkes	0	91	118	15	18	3	0	1	100	51	26	110	32	86	2	49	348
Parramatta	0	633	971	92	145	167	32	79	1,162	260	602	1,047	735	387	289	1,594	1,653
Penrith	3	940	1,271	166	162	98	7	46	1,060	264	764	1,402	599	560	193	1,003	2,802
Pittwater	0	81	194	19	22	10	0	3	141	78	73	309	89	104	39	131	502
Port Macquarie-Hastings	1	325	496	50	52	17	1	9	467	225	154	491	224	343	48	215	999
Port Stephens	2	229	336	53	58	8	2	4	564	197	214	521	134	269	24	203	951
Queanbeyan	0	134	161	24	31	9	1	1	262	86	99	347	93	100	15	129	436
Randwick	1	310	571	44	57	88	4	22	769	107	373	728	189	263	142	691	1,194
Richmond Valley	0	112	183	28	25	1	1	3	261	119	69	144	36	93	6	71	367
Rockdale	0	277	359	19	56	82	5	40	338	130	291	495	128	114	74	635	890
Ryde	0	133	198	31	53	36	5	9	328	107	152	468	373	167	41	547	686
Shellharbour	1	219	306	42	41	13	0	5	365	153	214	454	145	165	32	195	846
Shoalhaven	0	512	598	72	89	30	3	9	824	381	264	602	279	358	56	173	1,506
Singleton	0	57	103	14	17	4	1	1	139	129	105	113	30	119	10	50	330
Snowy River	0	17	29	7	5	1	0	0	14	14	0	30	4	24	8	41	91
Strathfield	0	115	200	18	26	78	10	31	372	59	178	335	77	73	101	456	348
Sutherland Shire	0	501	791	65	103	47	6	26	652	196	348	906	317	356	139	745	2,555
Sydney	6	943	4,086	196	335	551	32	174	1,370	928	713	2,844	1,987	1,120	3,155	4,557	3,724
Tamworth Regional	1	362	518	59	81	24	0	6	602	263	162	310	192	249	32	157	1,151
Temora	0	20	30	8	6	0	0	2	28	28	3	27	3	37	0	8	87
Tenterfield	0	26	48	3	4	0	0	1	102	53	16	45	13	40	0	11	111
The Hills Shire	0	317	338	56	36	34	9	15	553	209	173	534	388	235	59	651	1,137
Tumbarumba	0	8	11	0	3	0	0	0	15	12	5	20	1	16	0	4	34
Tumut Shire	0	39	77	6	16	1	0	0	38	19	6	40	17	48	2	18	195
Tweed	2	270	331	56	59	18	5	9	519	307	217	700	245	299	39	225	1,002
Unincorporated Far West	0	1	2	0	0	0	0	0	1	0	0	0	0	2	0	0	0
Upper Hunter Shire	0	35	51	10	11	0	0	0	51	78	30	52	8	36	0	22	167
Upper Lachlan Shire	0	8	12	1	6	0	0	0	17	20	3	13	1	17	1	10	85
Uralla	0	14	18	1	11	0	0	0	15	24	5	9	1	13	1	10	41
Urana	0	7	7	0	2	0	0	0	3	4	1	4	0	4	0	1	9
Wagga Wagga	0	236	463	54	60	10	0	8	521	277	194	624	255	442	41	149	1,146
Wakool	0	9	16	3	4	0	0	0	8	14	5	6	1	7	0	1	29
Walcha	0	7	10	4	1	0	0	0	11	13	3	10	2	10	0	3	34
Walgett	0	212	136	10	8	0	0	0	131	82	26	80	19	62	6	25	228
Warren	0	32	51	6	3	1	0	0	27	12	3	16	7	19	1	4	76
Warringham	1	239	431	34	61	50	2	9	424	150	195	584	335	283	86	471	1,143
Warrumbungle Shire	0	50	73	12	11	1	0	0	52	44	10	40	18	38	1	15	152
Waverley	1	133	425	24	41	23	1	6	370	65	205	346	382	201	202	639	706
Weddin	0	7	10	3	3	0	0	0	12	7	4	5	0	7	1	5	36
Wellington	0	70	93	12	13	0	0	1	171	44	36	92	33	66	8	22	363
Wentworth	1	74	37	9	12	1	0	2	91	88	41	85	17	41	12	14	167
Willoughby	1	54	148	9	30	21	6	5	335	88	78	265	465	101	80	462	386
Wingecarribee	2	107	186	26	22	7	0	0	137	158	40	151	59	116	14	108	693
Wollondilly	0	154	116	18	19	10	2	0	117	66	87	111	15	89	6	167	444
Wollongong	0	621	1,009	136	174	80	6	37	1,110	469	553	987	645	533	193	630	2,674
Woollahra	0	92	172	13	38	18	2	5	282	44	123	389	112	196	88	330	502
Wyong	3	700	973	176	152	53	3	11	745	529	532	1,194	453	474	128	587	2,600
Yass Valley	0	26	39	10	10	0	0	0	21	29	12	23	24	35	2	45	114
Young	0	67	99	26	14	0	0	0	44	48	21	65	32	63	4	42	333
Prisons	1	3	713	13	15	1	0	1	0	4	2	0	0	0	2	5	126
<b>NSW</b>	<b>71</b>	<b>26,006</b>	<b>39,474</b>	<b>4,492</b>	<b>5,216</b>	<b>3,510</b>	<b>410</b>	<b>1,487</b>	<b>41,215</b>	<b>17,046</b>	<b>20,256</b>	<b>44,772</b>	<b>20,377</b>	<b>20,849</b>	<b>8,820</b>	<b>35,774</b>	<b>91,321</b>

\* Number of victims.

TABLE 3.3D: NUMBER OF RECORDED CRIMINAL INCIDENTS FOR MAJOR OFFENCES, NSW LGAs, 2009

NSW LGAs 2009	Murder*	Assault - domestic violence related	Assault - non-domestic violence related	Sexual assault	Indecent assault, act of indecency and other sexual offences	Robbery without a weapon	Robbery with a firearm	Robbery with a weapon not a firearm	Break and enter dwelling	Break and enter non-dwelling	Motor vehicle theft	Steal from motor vehicle	Steal from retail store	Steal from dwelling	Steal from person	Fraud	Malicious damage to property
Albury	0	238	386	40	55	15	0	4	601	285	214	645	229	324	58	192	1,317
Armidale Dumaresq	1	115	167	20	26	6	0	3	217	160	63	174	90	90	20	74	504
Ashfield	2	68	94	10	21	24	6	10	157	55	107	229	89	82	33	221	301
Auburn	2	274	394	31	45	89	22	53	472	167	407	762	156	135	124	602	667
Ballina	0	145	229	26	45	12	0	2	219	205	80	256	104	183	23	164	590
Balranald	0	18	13	2	1	0	0	0	13	12	2	7	2	10	0	2	39
Bankstown	6	638	723	46	100	105	32	77	958	311	966	1,154	450	289	154	1,709	1,807
Bathurst Regional	0	219	323	47	45	10	0	3	248	91	88	254	94	158	28	115	744
Bega Valley	0	113	156	31	26	1	0	0	111	179	49	154	63	98	19	56	455
Bellingen	0	17	42	21	3	1	0	3	43	52	36	54	7	62	1	15	189
Berrigan	0	15	31	2	2	0	0	0	16	28	7	8	6	27	0	13	79
Blacktown	2	1,768	2,108	240	250	269	12	96	2,690	536	1,376	1,934	1,253	755	368	2,512	5,656
Bland	0	21	25	2	8	0	0	1	17	24	13	21	5	37	1	16	82
Blayney	0	19	32	4	6	0	0	0	15	29	2	13	1	27	0	9	119
Blue Mountains	0	222	386	40	70	23	1	9	298	177	119	291	89	191	39	202	1,350
Bogan	0	20	44	4	0	0	0	0	16	10	11	16	5	19	0	5	41
Bombala	0	11	11	1	2	0	0	0	10	39	2	8	2	9	1	6	42
Boorowa	0	3	6	3	3	0	0	0	5	7	1	3	0	3	0	2	16
Botany Bay	1	128	233	8	23	23	4	5	128	88	132	359	359	90	131	431	556
Bourke	0	118	89	7	12	5	0	0	58	27	35	60	18	35	6	12	167
Brewarrina	0	61	51	7	5	1	0	0	55	14	20	22	2	22	1	5	98
Broken Hill	0	176	172	21	22	3	0	0	260	81	41	122	31	175	9	42	465
Burwood	0	83	158	17	30	41	5	19	218	62	147	309	300	63	84	419	323
Byron	0	112	331	41	32	11	0	3	172	143	52	277	86	220	103	125	456
Cabonne	0	39	60	7	4	0	0	0	43	39	13	36	4	38	2	13	102
Camden	0	154	224	24	43	16	2	8	233	108	164	305	98	190	12	236	793
Campbelltown	2	1,116	1,255	153	155	156	20	62	1,427	325	759	974	488	537	186	679	3,600
Canada Bay	2	128	166	16	41	15	8	13	314	84	181	455	44	127	33	395	567
Canterbury	0	396	464	49	77	125	24	60	601	162	717	840	255	217	125	665	1,172
Carrathool	0	15	34	2	7	1	0	0	7	15	4	8	3	11	1	6	57
Central Darling	0	108	48	2	13	0	0	0	31	13	4	20	1	7	0	3	50
Cessnock	1	269	278	49	42	4	0	2	295	279	320	272	81	222	21	121	918
Clarence Valley	0	128	317	47	36	3	0	6	349	215	116	286	121	246	25	130	762
Cobar	0	25	38	6	3	0	0	0	19	19	9	28	11	26	1	18	110
Coffs Harbour	1	321	432	74	57	20	1	8	341	326	235	576	229	265	69	184	1,202
Conargo	0	1	1	0	1	0	0	0	0	0	0	3	0	0	0	0	1
Coolamon	0	12	10	2	0	0	0	0	16	35	7	10	2	12	0	5	61
Cooma-Monaro	0	34	64	8	7	2	0	0	30	30	6	21	12	38	3	29	197
Coonamble	0	40	58	3	5	0	0	0	97	56	19	66	8	27	1	22	167
Cootamundra	1	33	55	10	10	1	0	0	26	30	7	29	11	33	5	16	117
Corowa Shire	1	41	45	11	10	3	0	0	31	68	19	23	17	60	2	10	190
Cowra	0	90	126	9	13	3	0	0	148	107	24	147	28	75	8	22	339
Deniliquin	0	40	34	5	4	0	0	1	45	22	7	50	20	54	1	9	187
Dubbo	0	260	383	45	69	12	0	8	437	136	150	500	152	165	20	175	842
Dungog	0	22	14	4	7	0	0	0	26	49	20	40	0	32	2	8	93
Eurobodalla	1	148	270	36	42	5	0	5	227	127	76	400	102	145	14	82	590
Fairfield	10	690	790	82	106	124	31	87	1,072	315	762	1,068	308	259	174	1,041	1,703
Forbes	0	77	97	8	9	1	0	0	80	87	22	77	16	116	1	27	367
Gilgandra	0	25	47	4	8	0	0	0	41	21	19	30	11	29	2	15	88
Glen Innes Severn	0	27	63	17	5	1	0	0	36	44	6	30	11	44	3	20	167
Gloucester	0	14	28	3	4	1	0	0	8	28	7	11	2	15	0	4	60
Gosford	0	545	824	108	113	50	3	27	756	457	443	1,296	565	519	174	417	2,480
Goulburn Mulwaree	0	142	202	34	35	9	0	3	114	56	62	113	63	124	16	100	694
Great Lakes	1	180	231	26	23	5	0	2	184	177	86	186	59	114	15	87	508
Greater Hume Shire	0	17	22	12	8	0	0	0	49	62	22	24	5	36	1	14	94
Greater Taree	0	258	321	46	80	13	0	6	573	255	272	282	117	197	40	194	853
Griffith	1	151	229	20	29	3	0	2	219	59	105	133	95	96	8	85	520
Gundagai	0	11	6	4	4	0	0	0	7	9	5	13	7	4	2	36	21
Gunnedah	0	76	103	7	8	1	1	0	86	72	27	96	24	71	2	27	229
Guyra	0	26	27	7	6	0	0	0	11	22	8	10	1	14	2	6	76
Gwydir	0	6	24	3	1	0	0	0	13	12	1	5	4	25	1	6	35
Harden	0	8	11	2	1	0	0	0	7	9	2	7	5	11	1	3	25
Hawkesbury	0	265	334	48	43	19	3	15	294	161	222	286	136	177	26	220	1,060
Hay	0	23	13	2	5	0	0	0	7	19	3	8	0	8	0	12	32
Holroyd	3	445	403	47	55	74	23	40	807	127	446	505	141	263	85	771	1,081
Hornsby	7	176	308	46	70	41	3	20	438	239	153	521	220	195	71	445	1,215
Hunters Hill	0	13	32	1	3	0	3	0	44	10	16	46	0	25	1	18	92
Hurstville	0	229	292	37	47	84	6	41	347	134	241	495	433	147	108	427	846
Inverell	0	97	159	23	18	0	0	0	92	52	15	62	80	106	5	31	342
Jerilderie	0	2	2	0	0	0	0	0	3	3	3	5	0	5	0	6	10
Junee	1	24	27	5	5	0	0	0	27	43	12	24	5	24	0	2	87
Kempsey	2	214	254	29	31	9	2	6	389	193	172	182	47	202	23	70	560
Kiama	0	33	57	4	10	5	0	0	61	31	26	145	11	47	6	19	165
Kogarah	0	77	81	7	13	24	7	6	149	40	95	164	17	63	14	133	406
Ku-ring-gai	0	63	137	20	68	13	1	13	716	165	73	454	42	228	22	289	742
Kyogle	0	76	86	7	17	0	0	0	60	53	28	32	12	40	1	15	175
Lachlan	0	54	45	7	8	0	0	0	33	42	14	37	4	49	1	9	154
Lake Macquarie	3	740	913	144	145	31	1	15	961	849	732	1,361	521	650	79	646	3,067
Lane Cove	1	25	39	18	8	8	1	1	125	40	33	104	14	42	8	121	184
Leeton	0	50	80	7	11	4	0	1	127	96	46	56	17	59	1	15	212



TABLE 3.3D: NUMBER OF RECORDED CRIMINAL INCIDENTS FOR MAJOR OFFENCES, NSW LGAs, 2009

NSW LGAs 2009	Murder*	Assault - domestic violence related	Assault - non-domestic violence related	Sexual assault	Indecent assault, act of indecency and other sexual offences	Robbery without a weapon	Robbery with a firearm	Robbery with a weapon not a firearm	Break and enter dwelling	Break and enter non-dwelling	Motor vehicle theft	Steal from motor vehicle	Steal from retail store	Steal from dwelling	Steal from person	Fraud	Malicious damage to property
Leichhardt	2	121	242	18	33	16	17	16	262	105	242	603	136	134	71	328	677
Lismore	2	250	389	50	52	11	0	3	183	146	99	248	203	143	40	147	751
Lithgow	0	100	185	21	25	12	0	1	145	70	59	74	44	91	13	66	525
Liverpool	1	724	847	121	115	119	25	82	1,277	334	799	1,277	714	325	205	1,017	2,093
Liverpool Plains	0	43	46	0	5	2	0	0	21	20	9	17	5	25	1	19	68
Lockhart	0	11	8	6	8	0	0	0	8	22	7	5	1	14	0	0	33
Lord Howe Island	0	0	3	0	0	0	0	0	0	1	1	1	0	0	0	0	4
Maitland	1	267	405	60	55	21	1	9	355	224	266	625	196	290	56	237	1,290
Manly	0	73	277	13	36	11	1	3	160	49	55	196	119	138	89	207	492
Marrickville	0	198	312	31	53	60	16	44	386	161	354	797	172	162	75	505	962
Mid-Western Regional	1	98	153	15	38	4	0	0	140	128	71	94	51	123	7	64	466
Moree Plains	1	231	265	23	14	11	0	2	270	171	84	179	104	93	9	49	577
Mosman	0	30	39	5	18	5	2	3	149	18	35	106	25	57	16	87	244
Murray	0	22	16	3	9	1	0	0	25	17	3	20	17	23	5	9	79
Murrumbidgee	0	24	13	0	0	0	0	0	3	14	4	5	2	7	0	2	28
Muswellbrook	0	81	139	12	16	9	1	0	210	104	62	121	30	84	9	49	459
Nambucca	1	117	146	18	24	1	0	1	147	106	63	136	18	82	5	23	306
Narrabri	1	72	89	11	14	0	0	0	91	56	33	94	28	74	1	42	253
Narrandera	0	45	58	3	3	2	0	0	85	63	6	54	26	38	5	29	186
Narromine	1	35	54	4	14	0	0	0	72	52	23	51	10	55	4	10	156
Newcastle	0	629	1,350	103	141	134	3	67	1,431	770	810	1,828	712	711	284	810	3,482
North Sydney	1	95	267	21	24	23	2	14	386	257	110	299	120	142	94	586	614
Oberon	0	17	23	7	3	0	0	0	28	9	7	22	5	21	0	4	55
Orange	2	225	404	33	36	12	0	8	459	124	126	358	202	145	33	95	1,085
Palerang	0	32	36	2	10	0	0	0	52	27	18	21	5	41	1	23	138
Parkes	0	95	119	18	20	1	0	1	93	66	31	102	21	99	2	40	344
Parramatta	0	639	984	86	124	167	29	103	1,158	317	642	1,032	843	382	294	1,438	1,780
Penrith	0	861	1,225	139	178	110	20	47	958	337	881	1,315	582	429	163	1,073	3,086
Pittwater	0	86	166	16	27	10	0	1	165	114	82	462	66	139	40	190	716
Port Macquarie-Hastings	1	302	492	56	60	18	1	4	296	268	184	490	154	303	47	178	1,181
Port Stephens	0	259	353	50	31	11	0	10	577	308	296	546	179	285	41	204	1,069
Queanbeyan	0	123	192	22	27	5	0	4	219	84	93	283	61	112	28	178	599
Randwick	2	319	619	49	76	90	8	42	808	169	382	822	160	316	169	754	1,368
Richmond Valley	1	171	200	28	30	6	0	1	149	111	96	118	29	123	10	46	474
Rockdale	0	310	364	16	41	78	3	34	348	121	320	509	119	124	51	574	923
Ryde	1	190	259	45	62	28	3	15	356	120	154	415	326	136	82	533	713
Shellharbour	0	181	329	46	34	12	4	13	415	167	222	381	154	171	51	165	1,023
Shoalhaven	0	535	654	90	77	26	0	6	770	302	232	694	265	442	53	188	1,728
Singleton	1	58	103	14	21	2	0	2	121	109	109	150	33	89	6	51	364
Snowy River	0	20	45	4	10	0	0	0	29	41	5	21	9	22	8	65	111
Strathfield	0	95	212	14	31	72	10	35	328	57	185	298	57	89	127	403	346
Sutherland Shire	1	463	826	65	92	56	7	15	585	222	380	791	440	362	183	666	2,595
Sydney	4	922	3,950	215	262	743	47	217	1,657	1,025	778	4,444	1,934	960	3,669	4,305	3,951
Tamworth Regional	2	328	477	69	71	16	1	3	480	223	162	355	166	269	47	134	1,206
Temora	0	15	44	4	2	1	0	1	27	43	7	19	4	29	0	4	83
Tenterfield	0	28	49	2	5	0	0	0	56	30	10	62	24	46	2	6	70
The Hills Shire	0	317	371	37	58	28	5	16	767	226	226	638	429	286	76	649	1,379
Tumbarumba	0	9	7	2	3	0	0	0	8	25	7	11	1	8	1	5	28
Tumut Shire	0	40	70	4	2	1	0	0	19	50	13	43	12	23	3	10	205
Tweed	1	293	388	66	51	29	2	6	411	309	219	601	270	378	46	273	1,138
Unincorporated Far West	0	0	3	1	0	0	0	0	0	0	0	0	0	3	0	0	2
Upper Hunter Shire	0	35	49	4	6	0	0	0	39	54	17	31	6	50	1	21	169
Upper Lachlan Shire	0	10	16	0	2	0	0	0	29	30	12	19	2	27	0	5	62
Uralla	0	11	24	4	4	0	0	0	18	6	2	10	2	17	0	6	57
Urana	0	3	7	0	0	0	0	0	5	8	2	6	0	1	0	1	18
Wagga Wagga	0	293	459	52	66	13	0	3	452	272	154	595	200	465	55	205	1,391
Wakool	0	14	13	5	2	0	0	0	6	19	4	4	0	8	0	0	43
Walcha	0	11	17	2	3	0	0	0	12	15	8	7	0	7	0	5	47
Walgett	0	194	165	14	13	1	0	0	178	83	19	64	37	46	3	33	203
Warren	0	33	38	1	5	0	0	0	24	27	8	13	14	32	3	4	122
Warringham	0	242	390	38	78	48	4	11	442	187	191	791	334	307	112	480	1,466
Warrumbungle Shire	0	46	63	8	9	0	0	1	46	55	22	40	12	52	1	44	158
Waverley	0	126	363	15	66	35	7	6	389	105	199	381	422	220	299	722	697
Weddin	0	1	15	1	2	1	0	0	13	16	0	10	1	11	0	2	27
Wellington	0	75	102	19	10	1	0	3	125	45	38	56	27	49	4	16	339
Wentworth	1	91	68	11	12	0	0	0	74	72	38	55	11	52	2	25	140
Willoughby	0	48	155	16	23	21	5	12	290	130	74	236	559	89	80	477	450
Wingecarribee	1	118	233	24	34	4	0	1	158	146	79	157	53	119	21	104	732
Wollondilly	1	139	142	15	26	6	0	1	164	79	84	129	16	94	9	66	444
Wollongong	1	696	1,208	142	141	82	4	34	896	394	617	958	914	574	200	702	3,163
Woollahra	0	95	160	13	22	24	6	12	455	110	142	348	115	215	112	406	570
Wyong	1	753	951	146	144	44	5	11	842	389	518	1,118	469	493	112	417	2,678
Yass Valley	0	28	65	6	13	1	0	0	43	38	22	28	7	53	0	50	156
Young	0	73	96	11	20	0	0	1	68	54	13	55	26	51	4	33	323
Prisons	0	2	683	33	10	0	0	0	0	4	0	3	0	0	1	6	129
<b>NSW</b>	<b>85</b>	<b>26,217</b>	<b>40,616</b>	<b>4,386</b>	<b>5,327</b>	<b>3,770</b>	<b>461</b>	<b>1,671</b>	<b>41,588</b>	<b>19,239</b>	<b>22,331</b>	<b>47,036</b>	<b>20,631</b>	<b>21,310</b>	<b>9,868</b>	<b>35,478</b>	<b>101,619</b>

\* Number of victims.



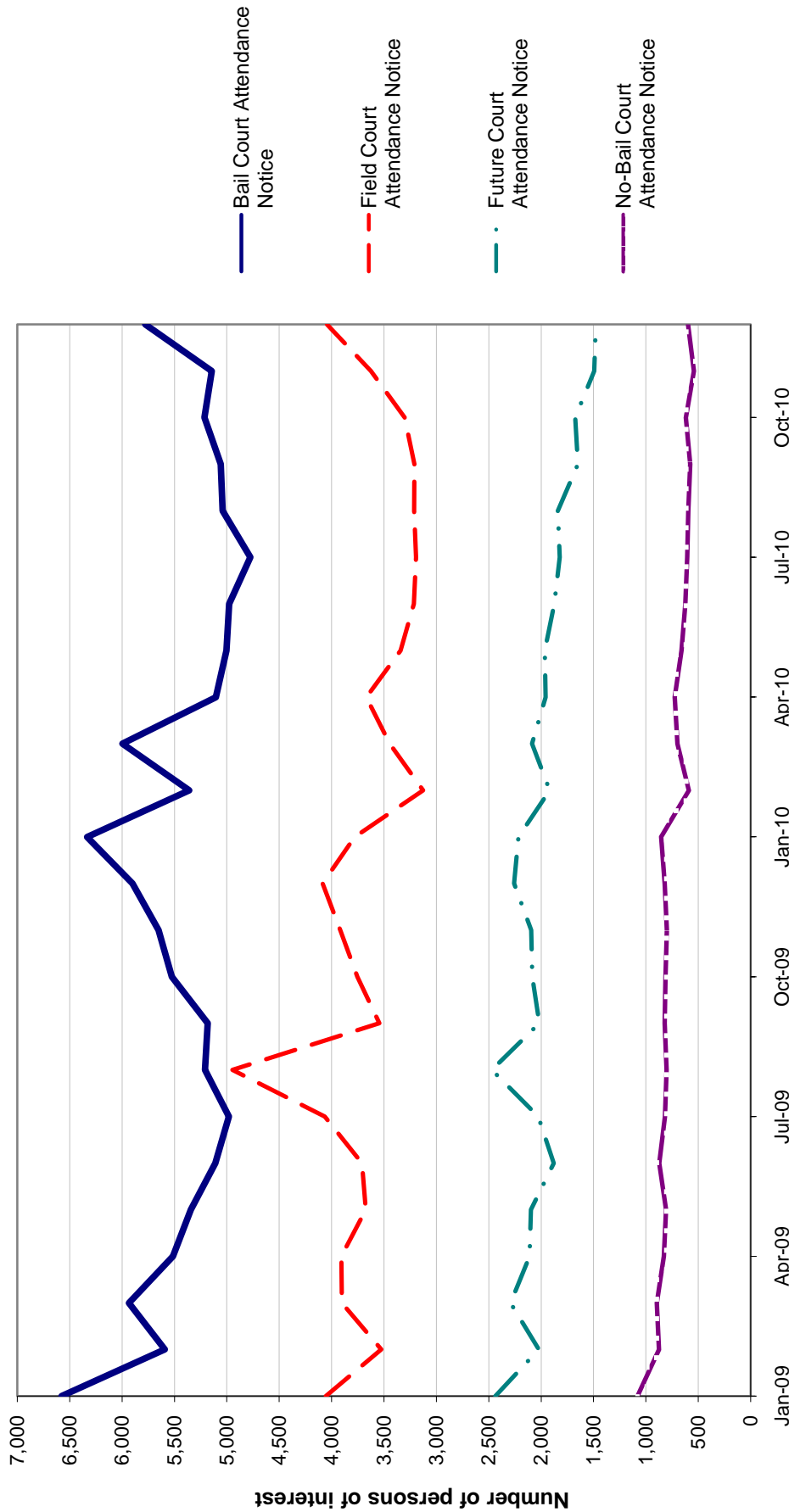
---

**SECTION 4:**

**METHODS OF PROCEEDINGS  
AGAINST ALLEGED OFFENDERS  
2008, 2009 AND 2010**

---

Figure 4.1: TRENDS IN REFERRAL METHODS FOR ALLEGED OFFENDERS PROCEEDED AGAINST TO COURT, NSW, JANUARY 2009 TO DECEMBER 2010



Trends: Field Court Attendance Notice shows a statistically significant downward trend for the 24-month period (down by 12.6%)  
 Future Court Attendance Notice shows a statistically significant downward trend for the 24-month period (down by 14.8%)  
 No-Bail Court Attendance Notice shows a statistically significant downward trend for the 24-month period (down by 24.8%)

\* Due to the time lag between the incident being recorded and the Future CAN being issued some upwards revision of data for the last three months of 2010 is expected.

**TABLE 4.1: NUMBER OF ALLEGED OFFENDERS RECORDED BY NSW POLICE FORCE BY METHOD OF LEGAL PROCEEDINGS  
NSW, JANUARY 2008 - DECEMBER 2010**

Type of process	Number of alleged offenders			Trend <sup>^</sup>	
	Jan-Dec 2008	Jan-Dec 2009	Jan-Dec 2010	Annual percentage change Jan 2009 - Dec 2010	Average annual percentage change Jan 2008 - 2010
<b>Proceeded against to court:</b>					
Bail Court Attendance Notice	66,650	66,540	63,802	Stable	Stable
No-Bail Court Attendance Notice	11,906	10,243	7,701	-24.8%	-19.6%
Future Court Attendance Notice	25,832	25,803	21,983	-14.8%	-7.8%
Field Court Attendance Notice	44,474	47,089	41,170	-12.6%	Stable
<b>All proceedings to court</b>	<b>148,862</b>	<b>149,675</b>	<b>134,656</b>	<b>-10.0%</b>	<b>-4.9%</b>
<b>Proceeded against other than to court:</b>					
Youth Justice Conference	1,836	2,020	1,556	-23.0%	-7.9%
Caution Young Offenders Act	11,577	11,280	10,541	Stable	-4.6%
Cannabis/other drug caution	3,500	4,075	4,672	<b>14.7%</b>	<b>15.5%</b>
Criminal Infringement Notice	8,858	10,051	11,795	<b>17.4%</b>	<b>15.4%</b>
Infringement Notice/ Public Safety Infringement Notice	532,963	538,700	627,430	<b>16.5%</b>	<b>8.5%</b>
<b>All proceedings other than to court</b>	<b>558,734</b>	<b>566,126</b>	<b>655,994</b>	<b>15.9%</b>	<b>8.4%</b>
<b>All proceedings</b>	<b>707,596</b>	<b>715,801</b>	<b>790,650</b>	Stable	<b>5.7%</b>

<sup>^</sup> For further explanation of **trend results**, see page 44, paragraphs 5 and 6.

NOTE: **Warnings** are no longer included in **Section 4: Methods of proceedings against alleged offenders**. Changes to the COPS system on 7 August 2008 restricted this category to formal warnings given under the provisions of the Young Offenders Act 1997. Previously this category included formal and informal warnings issued to juveniles and adults. On 10 December 2008, a further change to the COPS system modified how **Young Offenders Act** warnings were recorded, so there is no continuity in the previously published series



---

**SECTION 5:**

**CLEARED CRIMINAL INCIDENTS  
AND WHETHER LEGAL PROCEEDINGS  
COMMENCED FOR SELECTED OFFENCES  
JANUARY 2008 TO SEPTEMBER 2010**

---

**TABLE 5.1: NUMBER OF RECORDED CRIMINAL INCIDENTS FOR SELECTED OFFENCES BY CLEAR UP STATUS AND WHETHER LEGAL PROCEEDINGS COMMENCED, NSW, JANUARY TO DECEMBER 2008**

Type of offence	Total number recorded	Recorded criminal incidents					
		Cleared within 30 days of reporting			Cleared within 90 days of reporting		
		Total number cleared <sup>#</sup> within 30 days	Proceedings commenced <sup>##</sup> within 30 days	% proceedings commenced within 30 days	Total number cleared <sup>#</sup> within 90 days	Proceedings commenced <sup>##</sup> within 90 days	% proceedings commenced within 90 days
Murder*	81	58	49	60.5	63	54	66.7
Assault - domestic violence related	25,593	20,769	13,904	54.3	21,879	14,634	57.2
Assault - non-domestic violence related	42,815	19,169	9,265	21.6	21,543	10,917	25.5
Sexual assault	4,145	686	378	9.1	907	516	12.4
Indecent assault, act of indecency	3,437	868	481	14.0	1,077	617	18.0
Other sexual offences	1,743	503	274	15.7	564	315	18.1
Abduction and kidnapping	401	127	103	25.7	137	111	27.7
Robbery without a weapon	4,451	802	702	15.8	935	819	18.4
Robbery with a firearm	378	43	43	11.4	63	62	16.4
Robbery with a weapon not a firearm	1,863	339	307	16.5	445	410	22.0
Harassment, threatening behaviour and private nuisance	26,353	14,342	5,168	19.6	15,382	5,624	21.3
Break and enter dwelling	44,312	2,200	1,673	3.8	2,749	2,092	4.7
Break and enter non-dwelling	22,961	1,092	905	3.9	1,389	1,129	4.9
Motor vehicle theft	24,431	1,056	857	3.5	1,313	1,051	4.3
Steal from motor vehicle	57,851	1,123	807	1.4	1,325	951	1.6
Steal from retail store	19,930	10,514	8,185	41.1	11,087	8,685	43.6
Steal from dwelling	21,373	1,549	528	2.5	1,756	662	3.1
Steal from person	10,343	537	334	3.2	643	421	4.1
Stock theft	555	28	6	1.1	34	10	1.8
Fraud	39,250	4,182	2,629	6.7	5,549	3,764	9.6
Arson	7,302	366	155	2.1	406	179	2.5
Malicious damage to property	109,465	18,296	10,715	9.8	19,955	11,881	10.9

\* Total number cleared includes both incidents where proceedings were commenced and those where no proceedings were commenced.

## This includes incidents where a person was either proceeded against to court or proceeded against other than to court.

\* Victims for whom incident was cleared.



**TABLE 5.2: NUMBER OF RECORDED CRIMINAL INCIDENTS FOR SELECTED OFFENCES BY CLEAR UP STATUS AND WHETHER LEGAL PROCEEDINGS COMMENCED, NSW, JANUARY TO DECEMBER 2009**

Type of offence	Recorded criminal incidents						
	Total number recorded	Cleared within 30 days of reporting			Cleared within 90 days of reporting		
		Total number cleared#	Proceedings commenced within 30 days##	% proceedings commenced within 30 days	Total number cleared#	Proceedings commenced within 90 days##	% proceedings commenced within 90 days
Murder*	85	51	48	56.5	57	54	63.5
Assault - domestic violence related	26,217	21,145	14,769	56.3	22,489	15,568	59.4
Assault - non-domestic violence related	40,616	18,089	9,021	22.2	20,709	10,679	26.3
Sexual assault	4,386	727	333	7.6	1,022	437	10.0
Indecent assault, act of indecency	3,786	932	485	12.8	1,274	661	17.5
Other sexual offences	1,541	463	249	16.2	535	282	18.3
Abduction and kidnapping	328	87	67	20.4	104	82	25.0
Robbery without a weapon	3,770	714	624	16.6	834	731	19.4
Robbery with a firearm	461	67	62	13.4	95	87	18.9
Robbery with a weapon not a firearm	1,671	330	307	18.4	396	364	21.8
Harassment, threatening behaviour and private nuisance	28,337	15,386	5,910	20.9	16,748	6,520	23.0
Break and enter dwelling	41,588	2,068	1,585	3.8	2,614	2,003	4.8
Break and enter non-dwelling	19,239	1,064	902	4.7	1,369	1,150	6.0
Motor vehicle theft	22,331	1,020	835	3.7	1,285	1,035	4.6
Steal from motor vehicle	47,036	1,098	817	1.7	1,320	991	2.1
Steal from retail store	20,631	11,167	8,837	42.8	11,879	9,459	45.8
Steal from dwelling	21,310	1,600	507	2.4	1,882	626	2.9
Steal from person	9,868	557	354	3.6	647	408	4.1
Stock theft	512	23	1	0.2	33	7	1.4
Fraud	35,478	3,453	2,153	6.1	4,824	3,092	8.7
Arson	7,240	394	168	2.3	470	230	3.2
Malicious damage to property	101,619	17,524	10,931	10.8	19,243	12,134	11.9

# Total number cleared includes both incidents where proceedings were commenced and those where no proceedings were commenced.

## This includes incidents where a person was either proceeded against to court or proceeded against other than to court.

\* Victims for whom incident was cleared.

**TABLE 5.3: NUMBER OF RECORDED CRIMINAL INCIDENTS FOR SELECTED OFFENCES BY CLEAR UP STATUS AND WHETHER LEGAL PROCEEDINGS COMMENCED, NSW, JANUARY TO SEPTEMBER 2010**

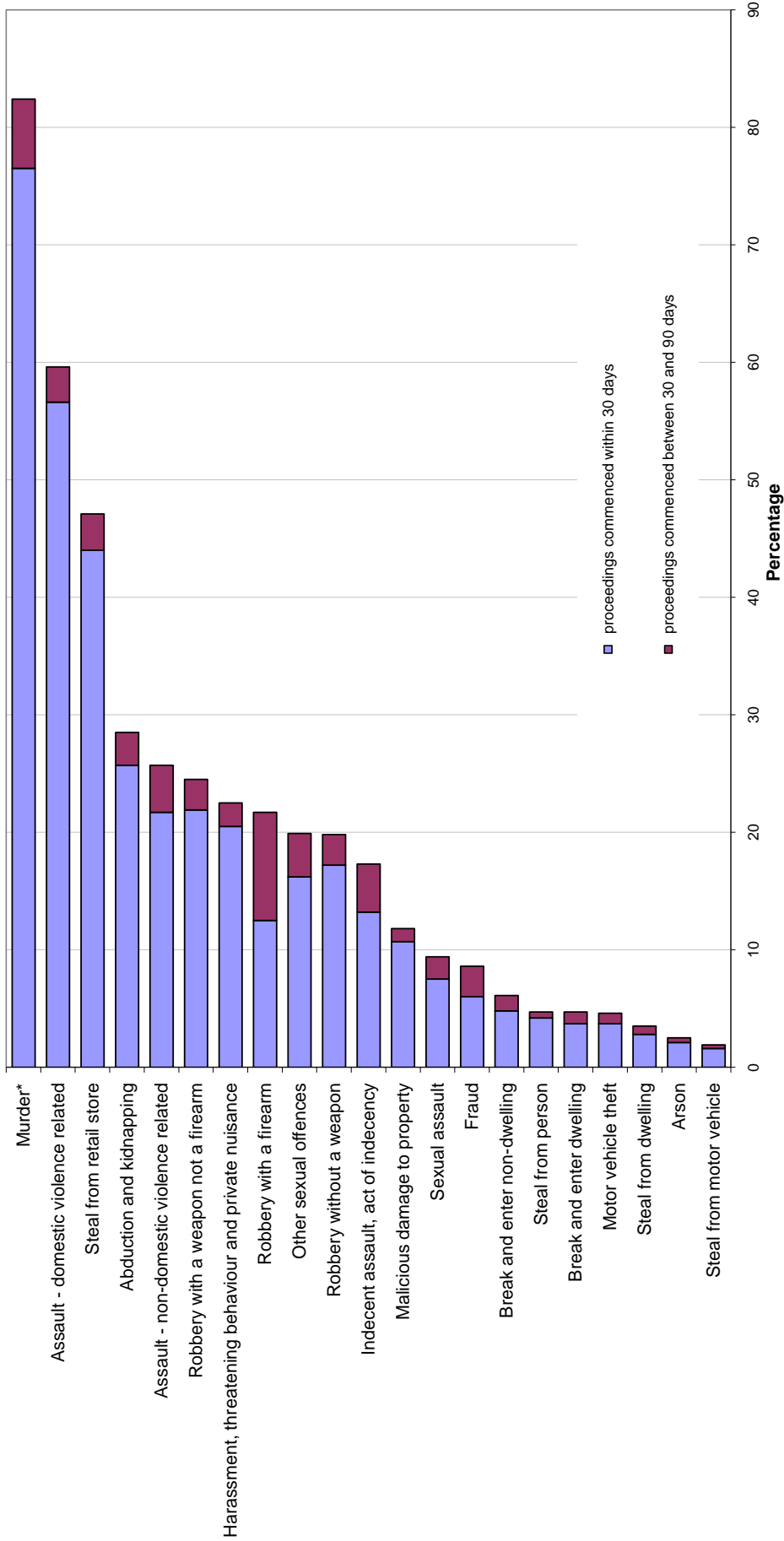
Type of offence	Total number recorded	Recorded criminal incidents					
		Cleared within 30 days of reporting			Cleared within 90 days of reporting		
		Total number cleared <sup>#</sup> within 30 days	Proceedings commenced within 30 days <sup>##</sup>	% proceedings commenced within 30 days	Total number cleared <sup>#</sup> within 90 days	Proceedings commenced within 90 days <sup>##</sup>	% proceedings commenced within 90 days
Murder*	51	40	39	76.5	43	42	82.4
Assault - domestic violence related	19,127	15,370	10,833	56.6	16,315	11,400	59.6
Assault - non-domestic violence related	29,393	13,147	6,386	21.7	15,086	7,554	25.7
Sexual assault	3,342	679	249	7.5	946	315	9.4
Indecent assault, act of indecency	2,871	830	378	13.2	1,127	497	17.3
Other sexual offences	1,139	359	185	16.2	425	227	19.9
Abduction and kidnapping	214	69	55	25.7	78	61	28.5
Robbery without a weapon	2,773	562	478	17.2	647	549	19.8
Robbery with a firearm	295	38	37	12.5	67	64	21.7
Robbery with a weapon not a firearm	1,133	264	248	21.9	299	278	24.5
Harassment, threatening behaviour and private nuisance	21,538	11,898	4,415	20.5	12,914	4,855	22.5
Break and enter dwelling	30,884	1,537	1,151	3.7	1,965	1,466	4.7
Break and enter non-dwelling	12,662	713	606	4.8	925	776	6.1
Motor vehicle theft	15,549	697	574	3.7	890	708	4.6
Steal from motor vehicle	33,693	717	551	1.6	853	650	1.9
Steal from retail store	15,319	8,537	6,734	44.0	9,059	7,214	47.1
Steal from dwelling	15,412	1,205	436	2.8	1,432	533	3.5
Steal from person	6,570	423	274	4.2	489	308	4.7
Stock theft	404	25	5	1.2	36	10	2.5
Fraud	27,819	2,727	1,663	6.0	3,733	2,391	8.6
Arson	4,450	220	92	2.1	256	112	2.5
Malicious damage to property	67,845	11,625	7,257	10.7	12,763	8,033	11.8

<sup>#</sup> Total number cleared includes both incidents where proceedings were commenced and those where no proceedings were commenced.

<sup>##</sup> This includes incidents where a person was either proceeded against to court or proceeded against other than to court.

\* Victims for whom incident was cleared.

**Figure 5.1: PERCENTAGE OF RECORDED CRIMINAL INCIDENTS FOR SELECTED OFFENCES WHERE LEGAL PROCEEDINGS COMMENCED WITHIN 30 AND 90 DAYS, NSW, JANUARY 2010 TO SEPTEMBER 2010**



\* For murder the data are counts of recorded victims, not criminal incidents.



---

# APPENDICES

---

## APPENDIX 1: TRENDS IN RECORDED CRIMINAL INCIDENTS FOR NSW

[1] Irrespective of how trends in recorded crime are presented, their interpretation is a difficult task. The recorded criminal incident data presented in this report are based on information derived from the NSW Police Force Computerised Operational Policing System (COPS), so only those incidents which are reported to, or detected by, police are included. The trends in recorded crime shown in this report will, therefore, reflect movements in the underlying factors which influence the detection, reporting and recording of crime, as well as changes in the true level of crime in the community.

[2] An alternative measure of the level of crime in Australia is available from crime victim surveys, for example the national Crime Victimization Survey (now in its second year) by the Australian Bureau of Statistics (ABS)<sup>1</sup>. As well as providing an estimate of the victimisation rate at the State level for a selected set of offences, this survey estimates the proportion of crimes which are not reported to police, and are therefore not recorded in the official statistics. In particular, personal crimes, such as assault and robbery, are less likely to be reported than crimes which involve households. For example, Crime Victimization Australia, 2009-10 estimates that in the 12-month period to June 2010 for NSW, 69.5 per cent of households that were victims of a *break-in* reported the incident to police, whilst 54.5 per cent of individuals aged 15 or over who were victims of a *physical assault* and 27.5 per cent who were victims of a *threatened assault* reported the incident<sup>2</sup>. Given that some offences have low reporting rates, it is possible that changes in recorded crime rates over time for these offences may be reflecting changes in reporting rates. For NSW the estimates of the reporting rates were not significantly different to the first survey of 2008-2009, but some of the victimisation rates have shown a decline (for example threatened assault, robbery and some property offences).

[3] Public willingness to report crime, however, is just one of the extraneous factors which can affect trends in recorded crime. Shifts in policing policy can also have a marked effect on the number of recorded drug offences, drink driving offences, cases of offensive behaviour or of receiving stolen goods. For these offences, therefore, recorded rates probably do not accurately reflect actual rates. For this reason, the more detailed comparisons of crime rates and examination of trends in this document are restricted to offence categories which are more likely to be reported to, rather than detected by police.

[4] The interpretation of trends in official reports of crime can be considerably more difficult than the interpretation of trends in unemployment or inflation statistics. The ease with which recorded crime statistics can be misunderstood creates a temptation to offer an authoritative explanation for each major crime trend. Indeed, in many instances it is simply impossible to state with any assurance why a particular trend has appeared. This report, therefore, confines itself to identifying and describing trends in recorded crime, rather than explaining them.

[5] For each offence category or subcategory (except murder), a statistical test for trend was applied to the monthly numbers of recorded criminal incidents over the relevant period. In the case of murder, the statistical test for trend was applied to the monthly numbers of victims over the period. The trend test used was Kendall's rank-order correlation test (see, for example, Conover, W.J. 1980, *Practical Non-Parametric Statistics*, 2nd ed, John Wiley and Sons, pp 256-260). A two-tailed test was used to determine whether there had been an increasing or decreasing trend in the recorded numbers of criminal incidents over the relevant period covered in the report. Some month to month variations in the numbers of recorded incidents could be due in part to seasonal factors. The test for trend is not sensitive to seasonal variations; it is sensitive only to a generally increasing or generally decreasing trend over the time period examined.

[6] For the trend tests throughout this publication, where a statistically significant trend was found ( $p < .05$ ), the extent of the trend is indicated by percentage change in the total number of recorded criminal incidents between the latest two consecutive 12-month periods for 24 month tests; and the average annual percentage change between the first 12-month period and the latest 12-month period for longer tests. A trend test was not performed if there were fewer than 20 incidents in any of the years for the period in question. The result ' . ' indicates that a trend test was not performed. A non-significant test result ( $p > .05$ ) is denoted by 'Stable' or by 'ns' in some larger LGA tables.

[7] In order to present an overview of crime trends in NSW the information in Section 1 relates to aggregate violent and property crime. The State graphs for violent and property offences are plotted as monthly rates<sup>3</sup> per 100,000 population. The State graph for violent offences shows distinct seasonality and the 12-month moving average (light grey line) indicates a slight downward path over the past few years, whilst the property offences graph and the 6-month moving average (light grey line) both indicate a strong downward path since about 2000. Violent offences include: *murder, assault - domestic violence related, assault - non-domestic violence related, assault police, robbery without a weapon, robbery with a firearm, robbery with a weapon not a firearm, sexual assault and indecent assault / act of indecency / other sexual offences*. Property offences include: *break and enter dwelling, break and enter non-dwelling, motor vehicle theft, steal from motor vehicle, steal from retail store, steal from dwelling, steal from person, stock theft, other theft and fraud*.

[8] The ratio to NSW rate statistics are a comparison of a NSW regional rate per 100,000 population to the NSW rate per 100,000 population. A ratio of one indicates parity with the NSW rate. Ratios indicating double the NSW rate (or more) before rounding are highlighted in red, whilst ratios indicating half the NSW rate (or less) before rounding are highlighted in yellow.

1. Australian Bureau of Statistics 2011, *Crime Victimization Australia, 2009-10, Cat. No. 4530.0, ABS, Sydney*.

2. Australian Bureau of Statistics 2011, *Crime Victimization Australia, 2009-10, pages 11-16, Cat. No. 4530.0, ABS, Sydney*.

3. For the rate calculations throughout this publication, population data were obtained from the Australian Bureau of Statistics publication: *Regional Population Growth Australia 2008-09 Cat. No. 3218 (for 2008 and 2009 population estimates)*. As no population estimates were available for 2010 when this report was published, rates for 2010 were calculated using 2009 population estimates.

## APPENDIX 2: DEFINITIONS AND EXPLANATORY NOTES

The data in this report are extracted from the NSW Police Computerised Operational Policing System (COPS). This system is used for record-keeping for all police operations, not just for criminal matters.

In this report:

- the counting units are recorded *criminal incidents* rather than recorded *offences* (except for murder and manslaughter, where the counting units are victims); and
- the data are categorised by date of *reporting* to police (or date of detection by police) rather than by date of *occurrence* of the offence.
- Prior to August 2008, if police suspected a criminal incident reported to them did not occur they could record it as 'doubtful'. In the past BOCSAR's recorded crime statistics have included 'accepted' and 'doubtful' incidents. In August 2008 NSW Police removed the 'doubtful' category from COPS, instead directing police officers to categorise these incidents as 'accepted' unless evidence existed to indicate the crime did not occur. In which case the incident would be categorised as 'rejected'. Thus recorded crime statistics from August 2008 to the present have not contained 'doubtful' incidents. In order to present a continuous series BOCSAR have decided to retrospectively limit recorded crime statistics to only 'accepted' incidents. To do this we have removed the 'doubtful' incidents from crime data from January 1995 to August 2008. There will therefore be a slight revision to incident counts recorded prior to 2008. This means that reports from 2009 onwards will differ slightly in some offence counts from those in reports published prior to 2009.

### RECORDED CRIMINAL INCIDENTS

A criminal incident is defined as an activity detected by or reported to police which:

- involved the same offender(s);
- involved the same victim(s);
- occurred at the one location;
- occurred during one uninterrupted period of time;
- falls into one offence category;
- falls into one incident type (for example, 'actual', 'attempted', 'conspiracy').

One incident may involve two offenders assaulting the same victim. This would be recorded as one assault incident. Alternatively, suppose a man reports to police that he found his neighbour in the process of damaging his car and, when confronted, the neighbour assaulted him. For such an event, two criminal incidents are recorded because two distinct offence types are involved (malicious damage to property and assault) even though the same parties were involved at the same time and in the same place.

### RECORDED VICTIMS

For murder and manslaughter only, the counting units used are victims. Under the definition of a criminal incident (same parties, same time, same place, same offence and same incident type) one murder or manslaughter incident could involve two or more persons being killed. Because of the seriousness of these offences and their relatively small numbers, it is considered to be more appropriate to count the number of victims, rather than the number of criminal incidents. Hence, where one murder incident involves a person killing six people, six murder victims are counted.

### OFFENCE CATEGORIES

The classification of offences in this report is broadly based on the Australian Standard Offence Classification (ASOC) devised by the Australian Bureau of Statistics (*ABS 2008, second edition, Cat. No. 1234.0*).

For all type of offence classifications used in the report, Appendix 3 lists the offence categories included in the classification. The original offence categories are those used by the NSW Police Force and do not necessarily correspond exactly with offences defined in legislation.

## APPENDIX 2: DEFINITIONS AND EXPLANATORY NOTES *continued*

### MAJOR OFFENCE CATEGORIES

Major offence categories include the most serious personal violence and property offences. The most serious of these offences is *murder* for which the incident count is the number of victims. Assault offences include the two major offence categories of *domestic violence related assault* and *non-domestic violence related assault*. Note that since 2008, the offence *Assault Police* has been separately identified from the two major assault categories. All sexual offences are categorised by the two major offence types, either as *sexual assault* or *indecent assault, act of indecency and other sexual offences*.

Robbery offences are sorted into three categories by use of weapon as: *robbery with a firearm*, *robbery with a weapon not a firearm* or *robbery without a weapon*. The serious theft offences in this group start with the burglary categories of *break and enter - dwelling* and *break and enter - non-dwelling* followed by *motor vehicle theft* and *steal from motor vehicle*. Other theft offences included in the 17 major offences are *steal from retail store*, *steal from dwelling*, *steal from person* and *fraud*. The final property offence listed as a major offence is *malicious damage to property*.

### COUNTING PERIOD

Criminal incidents are included in the counting period in which they were reported to or detected by police.

In most cases criminal incidents are recorded on COPS on the day of reporting. However there may be some time delay before the incident gains the status of accepted and verified (which are necessary conditions for inclusion in this report). It is therefore possible for some updating of data to occur. That is, data extracted for a specified period of time (incidents reported in 2009, for example), may differ according to the date of extraction of the data.

### PROCEEDINGS AGAINST ALLEGED OFFENDERS

Police may proceed against alleged offenders through a variety of legal or other processes. Most alleged offenders are referred to the NSW Criminal Courts. The more serious offences are dealt with by way of a Bail Court Attendance Notice (known as a Charge prior to July 2003) or a No-Bail Court Attendance Notice (known as a Court Attendance Notice (CAN) prior to July 2003). In these instances, the alleged offender is arrested, taken to a police station, fingerprinted and the details of the person and all charges are recorded. Alternatively a Field Court Attendance Notice may be issued by police at other locations. A Future Court Attendance Notice (previously called a Summons) is used for less serious offences. Due to the time lag between the incident being recorded and the Future CAN being issued, data for the last three months are likely to be low and subject to future revision.

Some alleged offenders are proceeded against but diverted from the criminal court system. For many minor offences police can issue Infringement Notices. By paying the prescribed penalty the offender avoids having to go to court. Under the *Young Offenders Act 1997*, a juvenile offender can be issued with either a warning, a caution or referred to a youth justice conference.

A youth justice conference is a face-to-face meeting between offenders, victims and their support persons. The offending behaviour is discussed and an outcome plan for the offender negotiated. Note that both the police and the courts can refer a young person to a youth justice conference. However, the number of alleged offenders proceeded against by way of a youth justice conference, as shown in Table 4.1 includes only police referrals to a youth justice conference.

Each offender or alleged offender appears only once in the table for each event. Note that multiple criminal incidents may be associated with a single event. The processes are arranged in a hierarchy with the offender or alleged offender appearing in the most serious category where multiple incidents are involved. For example if an event involves two incidents and the alleged offender is charged for one incident but receives a caution for the second incident, the alleged offender appears only in the relevant '*proceeded against to court*' category.



## APPENDIX 2: DEFINITIONS AND EXPLANATORY NOTES *continued*

### PROCEEDINGS AGAINST ALLEGED OFFENDERS *continued*

Note that in these tables, the year refers to the year in which the criminal incident or incidents were reported to police. For example, if an incident was reported to police in 2009 but the alleged offender was not apprehended and charged until 2010, the charge is recorded for 2009. This section also includes a figure showing trends over 24 months in methods of proceeding against offenders and alleged offenders which lead to attendance at court. Alleged offenders who are not legally proceeded against are not included in this report.

### CLEARED CRIMINAL INCIDENTS

A cleared criminal incident is one, which, in the view of police, has been satisfactorily cleared by the commencement of legal proceedings or otherwise.

An incident is cleared by the commencement of legal proceedings when police have laid a charge or an information against at least one person. The information may have been laid with a view to the issuing of a warrant, Future CAN or other process for the purpose of bringing an offender before the court.

A criminal incident is cleared other than by commencement of legal proceedings when, under normal circumstances, a charge or information would have been laid against at least one person, but, for a variety of reasons, police have been unable to make an arrest, despite knowing the identity of the offender and having sufficient evidence to support a charge. Examples of situations in which an offence may be cleared other than by charge include the following:

- the offender is a juvenile and is cautioned;
- the offender has died before a charge is made or information laid;
- the offender has been committed to a psychiatric institution and is unlikely to be released;
- there is an obstacle to charging, such as diplomatic immunity;
- the complainant or essential witness is dead and proceedings would be aborted;
- the offender is serving a sentence and police consider that no useful purpose would be served by prosecution.

The offence types included in these tables are those where the crime is likely to have been reported to police, rather than discovered or detected by police. Offence types where the numbers of recorded criminal incidents are influenced by police law enforcement activity (drug offences, for example) are excluded. For such offence types, the clear-up percentages are very high because clearing the offence generally occurs simultaneously with its detection (that is, an arrest is made when the crime is discovered). This report contains criminal incidents cleared within 30 and 90 days after the incident was reported to the NSW Police Force.

Because the data for this report were extracted early in February 2011, the clear-up status after 90 days could not be determined for any offences reported in the last three months of 2010. Hence, the clear-up data for 2010 are for the first nine months of the year only.

### REGIONAL STATISTICS

Statistics are provided on the number of criminal incidents (victims for murder) recorded for each of the Statistical Divisions of NSW as defined by the Australian Bureau of Statistics (ABS). Within the Sydney Statistical Division, statistics are provided for Statistical Subdivisions.

Recorded criminal incidents which occurred in correctional, detention or remand centres, however, are not counted in the Statistical Division in which the incident occurred. Appendix 4 provides maps indicating the location of each Statistical Division and Sydney Statistical Subdivision. Appendix 5 lists the Local Government Areas (LGAs using 2008 boundaries) within each of the Sydney Statistical Subdivisions and regional Statistical Divisions. Note that LGA boundaries change from time to time and that the current list differs from that stated in the 2004 NSW recorded crime report. A criminal incident is counted within a particular region when the location of the offence falls within that region.

For the rate calculations, population data were obtained from the Australian Bureau of Statistics publication: *Regional Population Growth, Australia, 2008-09*, Cat. No. 3218.0 (for 2008 and 2009 population estimates). As no population estimates were available for 2010 when this report was published, rates for 2010 were calculated using 2009 population estimates.

**APPENDIX 3: BOCSAR OFFENCES MAPPED TO POLICE INCIDENT CATEGORIES**

<b><i>BOCSAR offence</i></b>	<b><i>NSW Police Force offence incident categories</i></b>
<b>Homicide</b>	
Murder	Murder – actual
Attempted murder	Murder – attempted Shoot with intent to murder
Murder accessory, conspiracy	Murder accessory Murder conspiracy
Manslaughter – not driving	Manslaughter
Driving causing death	Driving causing death
<b>Assault</b>	
	<i>Includes any of the following offences disaggregated by whether or not police have flagged the incident as domestic violence related:</i>
Domestic violence related	Actual bodily harm Grievous bodily harm (including malicious wounding) Common assault Shoot with intent other than to murder Spike drink/food
Non-domestic violence related	Actual bodily harm Grievous bodily harm (including malicious wounding) Common assault Shoot with intent other than to murder Spike drink/food
Assault Police	Resist / hinder / assault Police officer
<b>Sexual offences</b>	
Sexual assault	Sexual assault Aggravated sexual assault Assault with intent to have sexual intercourse
Indecent assault, act of indecency	Indecent assault Aggravated indecent assault Act of indecency Aggravated act of indecency
Other sexual offences	Incest Carnal knowledge Wilful and obscene exposure Indecent communication Peep or pry Bestiality Other sexual offence Grooming / procuring
<b>Abduction and kidnapping</b>	
	Abduction / kidnapping

**APPENDIX 3: BOCSAR OFFENCES MAPPED TO POLICE INCIDENT CATEGORIES**

<b>BOCSAR offence</b>	<b>NSW Police Force offence incident categories</b>
<b>Robbery</b>	
Robbery without a weapon	<i>Includes any of the following offences in which no weapon was recorded:</i> Robbery Robbery with aggravation Demand money with menaces Robbery with wounding Other robbery
Robbery with a firearm	<i>Includes any of the following offences in which a firearm was recorded as a weapon:</i> Robbery Armed robbery Robbery with aggravation Demand money with menaces Robbery with wounding Other robbery
Robbery with a weapon not a firearm	<i>Armed robbery where a firearm was not recorded as a weapon or any of the following offences in which a weapon other than a firearm was recorded:</i> Robbery Robbery with aggravation Robbery with wounding Demand money with menaces Other robbery
<b>Blackmail and extortion</b>	Extortion / blackmail
<b>Harassment, threatening behaviour and private nuisance</b>	Intimidation ( <i>includes threatening behaviour, stalking</i> ) Threats against Police Telecommunications offence ( <i>includes nuisance phone calls</i> ) Violent disorder Riot and affray
<b>Other offences against the person</b>	Malicious damage intent injure / endanger Negligent act cause grievous bodily harm Other offence against the person
<b>Theft</b>	
Break and enter – dwelling	<i>Dwelling includes premises where people reside such as house, home unit, caravan, tent as well as any attachment such as garage, shed, yard and garden.</i> Break, enter and steal Break, enter intent to steal Break, enter and commit other felony Break, enter, intent to commit other felony
Break and enter – non-dwelling	<i>Non-dwelling includes commercial and government premises.</i> Break, enter and steal Break, enter intent to steal Break, enter and commit other felony Break, enter and intent to commit other felony

### APPENDIX 3: BOCSAR OFFENCES MAPPED TO POLICE INCIDENT CATEGORIES

<b>BOCSAR offence</b>	<b>NSW Police Force offence incident categories</b>
<b>Theft continued:</b>	
Receiving or handling stolen goods	Receiving Goods in custody Possess property stolen outside NSW
Motor vehicle theft	Theft of motor cars, motor cycles, and other vehicles / vessels Rebirthing vehicles
Steal from motor vehicle	Steal from motor vehicle
Steal from retail store	Steal from retail store
Steal from dwelling	Steal from dwelling Other stealing <i>occurring in a residential dwelling</i>
Steal from person	Steal from person
Stock theft	Steal stock (animal)
Fraud	Larceny clerk / servant / bailee Make / use false instrument Embezzlement Fraudulent misappropriation Company / corporate offence Deception offence Possess false instrument Publish false misleading statement Corrupt commission / practices Counterfeit currency Other fraud Computer crime Copyright/Intellectual property / Trademark Fail to pay Misappropriate cheques / funds Corrupt payment (receive or pay) Receiving (fraud related)
Other theft	Steal from marine vessel Steal vessel Other stealing <i>occurring somewhere other than a residential dwelling</i> (eg at temporary accommodation, business / commercial premises, in outdoor / public places, recreation premises)
<b>Arson</b>	Bushfire Fire of structure, commodity, or vehicle (eg. aircraft / motor vehicle / train / vessel)
<b>Malicious damage to property</b>	Malicious damage to property Graffiti Public place – damage fountain / wall etc. Public place – damage shrine / monument

**APPENDIX 3: BOCSAR OFFENCES MAPPED TO POLICE INCIDENT CATEGORIES**

<b><i>BOCSAR offence</i></b>	<b><i>NSW Police Force offence incident categories</i></b>
<b>Drug offences</b>	
Possession and / or use of cocaine	Possess drug <i>where drug type is cocaine</i> Use or administer drug <i>where drug type is cocaine</i>
Possession and / or use of narcotics	Possess drug <i>where drug type is narcotics</i> Use or administer drug <i>where drug type is narcotics</i>
Possession and / or use of cannabis	Possess drug / plant <i>where drug type is cannabis</i> Use or administer drug <i>where drug type is cannabis</i>
Possession and / or use of amphetamines	Possess drug <i>where drug type is amphetamines</i> Use or administer drug <i>where drug type is amphetamines</i>
Possession and / or use of ecstasy	Possess drug <i>where drug type is ecstasy</i> Use or administer drug <i>where drug type is ecstasy</i>
Possession and / or use of other drugs	Possess drug <i>where drug type is not cocaine, narcotics, cannabis, amphetamines or ecstasy</i> Use or administer drug <i>where drug type is not cocaine, narcotics, cannabis, amphetamines or ecstasy</i>
Dealing, trafficking in cocaine	Supply drug <i>where drug type is cocaine</i>
Dealing, trafficking in narcotics	Supply drug <i>where drug type is narcotics</i>
Dealing, trafficking in cannabis	Supply drug / plant <i>where drug type is cannabis</i>
Dealing, trafficking in amphetamines	Supply drug <i>where drug type is amphetamines</i>
Dealing, trafficking in ecstasy	Supply drug <i>where drug type is ecstasy</i>
Dealing, trafficking in other drugs	Supply drug <i>where drug type is not cocaine, narcotics, cannabis, amphetamines or ecstasy</i>
Cultivating cannabis	Cultivation
Manufacture drug	Manufacture drug
Importing drugs	Import drug / plant
Other drug offences	Forge and / or utter prescription Possess drug utensil Other drug detection / seizure offence

**APPENDIX 3: BOCSAR OFFENCES MAPPED TO POLICE INCIDENT CATEGORIES**

<b><i>BOCSAR offence</i></b>	<b><i>NSW Police Force offence incident categories</i></b>
<b>Prohibited and regulated weapons offences</b>	Possess whilst unlicensed Possess shortened firearm Possess prohibited weapon / article Shorten firearm Firearms, dealer offence Unlawfully discharge firearm Trespass with firearm Use firearm under influence Discharge firearm into premises Other firearm offence Other firearm licensing offence Firearms, not ensure safekeeping Use prohibited weapon / article Sell prohibited weapon / article Other prohibited weapon / article offence Bomb hoax or threat Possess explosive / dangerous article Item / object / found where item / object is a weapon Explosives licensing offence Unlawful handling/access/supply of explosives Improper storage of explosives Other explosives offence
<b>Disorderly conduct</b>	
Trespass	Trespass Remain inclosed lands
Offensive conduct	Offensive conduct
Offensive language	Offensive language
Criminal intent	Enter land with intent Armed with intent Disguised with intent Intent to repeat indictable offence Possess implements
<b>Betting and gaming offences</b>	Own / manage premises – gaming Own / manage premises – betting Conduct / play illegal game/betting Other gaming offence
<b>Liquor offences</b>	Consume alcohol in public by minor Consume alcohol in alcohol-free zone Liquor Act offence – Supply liquor to juvenile Liquor Act offence by minor, customer, employee or licensee Registered Clubs Act offence by minor, customer, employee, secretary or club
<b>Pornography offences</b>	Possess / disseminate child pornography Possess / publish indecent material

**APPENDIX 3: BOCSAR OFFENCES MAPPED TO POLICE INCIDENT CATEGORIES**

<b><i>BOCSAR offence</i></b>	<b><i>NSW Police Force offence incident categories</i></b>
<b>Prostitution offences</b>	Soliciting / prostitution in public Prostitution – premises Prostitution – live off earnings Consorting Child prostitution Other vice offence
<b>Against justice procedures</b>	
Escape Custody	Escapee - Department of Community Services custody Escapee – Corrective Services custody Escapee – Police custody Escapee – Other custody
Breach Apprehended Violence Order	Breach Apprehended Violence Order – domestic Breach Apprehended Violence Order – personal
Breach bail conditions	Breach bail conditions
Fail to appear	Fail to appear
Resist or hinder officer	Resist/hinder officer Refuse to be searched Refuse to produce object Refuse direction drug related / not drug related Refuse direction intoxicated person Refuse for vehicle to be searched
Other offences against justice	Other judicial offence Contravene Child Protection Prohibition Order (CPPO)
<b>Transport regulatory offences</b>	Transport offence ( <i>includes offences on the rail network such as travelling without a valid ticket, smoking, drinking or using offensive language on a train or railway land</i> )
<b>Other offences</b>	Immigration / customs offence Animals – dog offences Family law offence Obstruction Public mischief Offence against transport service Other street offences Terrorism offences Other miscellaneous offences  Offences under various acts: Acts administered by NSW Maritime <i>Australian Postal Corporation Act 1989 (Cwlth)</i> <i>Children and Young Persons (Care and Protection) Act 1998 (NSW)</i> <i>Children (Care and Protection) Act 1987 (NSW)</i> <i>Companion Animals Act 1998 (NSW)</i> <i>Family Law Act 1975 (Cwlth)</i> <i>Local Government Act 1993 (NSW)</i> <i>Pawnbrokers and Second-hand Dealers Act 1996 (NSW)</i> <i>Prevention of Cruelty to Animals Act 1979 (NSW)</i> <i>Rural Fires Act 1997 (NSW)</i> <i>Security Industry Act 1997 (NSW)</i>

## APPENDIX 4: MAPS

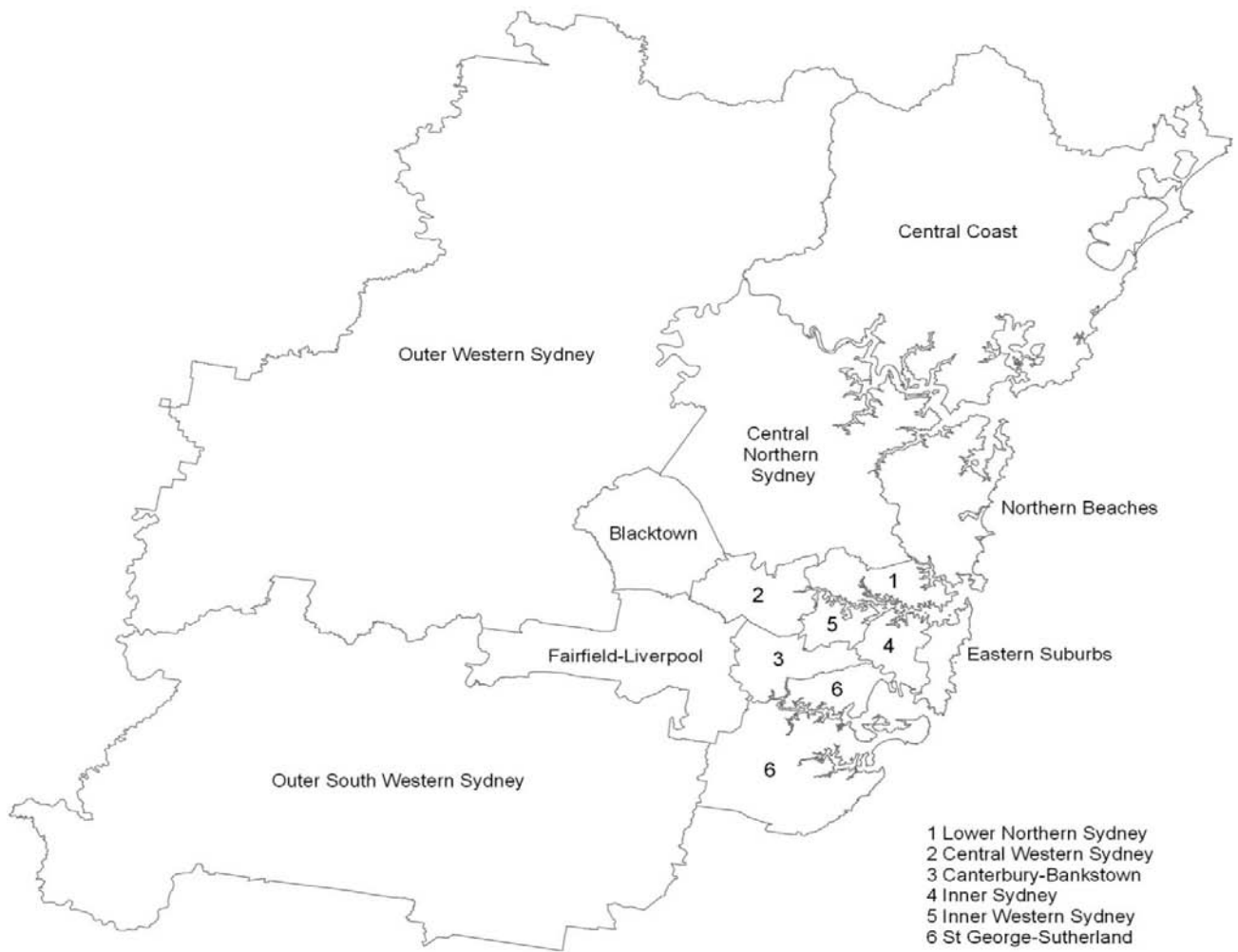
Map 1: New South Wales Statistical Division boundaries





**APPENDIX 4: MAPS** *continued*

Map 2: Sydney Statistical Subdivision boundaries



**APPENDIX 5: LGAS IN METROPOLITAN STATISTICAL SUBDIVISIONS*****Sydney Statistical Subdivisions***

---

***Inner Sydney***

Botany Bay  
Leichhardt  
Marrickville  
Sydney

***Inner Western Sydney***

Ashfield  
Burwood  
Canada Bay  
Strathfield

***Central Northern Sydney***

Baulkham Hills  
Hornsby  
Ku-ring-gai

***Eastern Suburbs***

Randwick  
Waverley  
Woollahra

***Central Western Sydney***

Auburn  
Holroyd  
Parramatta

***Northern Beaches***

Manly  
Pittwater  
Warringah

***St George – Sutherland***

Hurstville  
Kogarah  
Rockdale  
Sutherland Shire

***Outer Western Sydney***

Blue Mountains  
Hawkesbury  
Penrith

***Central Coast***

Gosford  
Wyong

***Canterbury – Bankstown***

Bankstown  
Canterbury

***Blacktown***

Blacktown

***Newcastle***

Cessnock  
Lake Macquarie  
Maitland  
Newcastle  
Port Stephens

***Fairfield – Liverpool***

Fairfield  
Liverpool

***Lower Northern Sydney***

Hunters Hill  
Lane Cove  
Mosman  
North Sydney  
Ryde  
Willoughby

***Outer South Western Sydney***

Camden  
Campbelltown  
Wollondilly

***Wollongong***

Kiama  
Wollongong  
Shellharbour

**APPENDIX 5: LGAS IN NSW REGIONAL STATISTICAL DIVISIONS*****NSW regional Statistical Divisions***

<b><i>Hunter</i></b>	<b><i>Illawarra</i></b>	<b><i>Richmond – Tweed</i></b>	<b><i>Mid-North Coast</i></b>
Cessnock	Kiama	Ballina	Bellingen
Dungog	Shellharbour	Byron	Clarence Valley
Gloucester	Shoalhaven	Kyogle	Coffs Harbour
Great Lakes	Wingecarribee	Lismore	Greater Taree
Lake Macquarie	Wollongong	Richmond Valley	Port Macquarie–Hastings
Maitland		Tweed	Kempsey
Muswellbrook			Lord Howe Island
Newcastle			Nambucca
Port Stephens			
Singleton			
Upper Hunter Shire			
<b><i>Northern</i></b>	<b><i>North Western</i></b>	<b><i>Central West</i></b>	<b><i>South Eastern</i></b>
Armidale Dumaresq	Bogan	Bathurst Regional	Bega Valley
Glen Innes Severn	Bourke	Bland	Bombala
Gunnedah	Brewarrina	Blayney	Boorowa
Guyra	Cobar	Cabonne	Cooma–Monaro
Gwydir	Coonamble	Cowra	Eurobodalla
Inverell	Dubbo	Forbes	Goulburn Mulwaree
Liverpool Plains	Gilgandra	Lachlan	Harden
Moree Plains	Mid-Western Regional	Lithgow	Palerang
Narrabri	Narromine	Oberon	Queanbeyan
Tamworth Regional	Walgett	Orange	Snowy River
Tenterfield	Warren	Parkes	Upper Lachlan Shire
Uralla	Warrumbungle Shire	Weddin	Yass Valley
Walcha	Wellington		Young
<b><i>Murrumbidgee</i></b>	<b><i>Murray</i></b>	<b><i>Far West</i></b>	
Carrathool	Albury	Broken Hill	
Coolamon	Balranald	Central Darling	
Cootamundra	Berrigan	Unincorporated Far West	
Griffith	Conargo		
Gundagai	Corowa Shire		
Hay	Deniliquin		
Junee	Greater Hume Shire		
Leeton	Jerilderie		
Lockhart	Murray		
Murrumbidgee	Tumbarumba		
Narrandera	Urana		
Temora	Wakool		
Tumut	Wentworth		
Wagga Wagga			

